



Medusa Mining Ltd

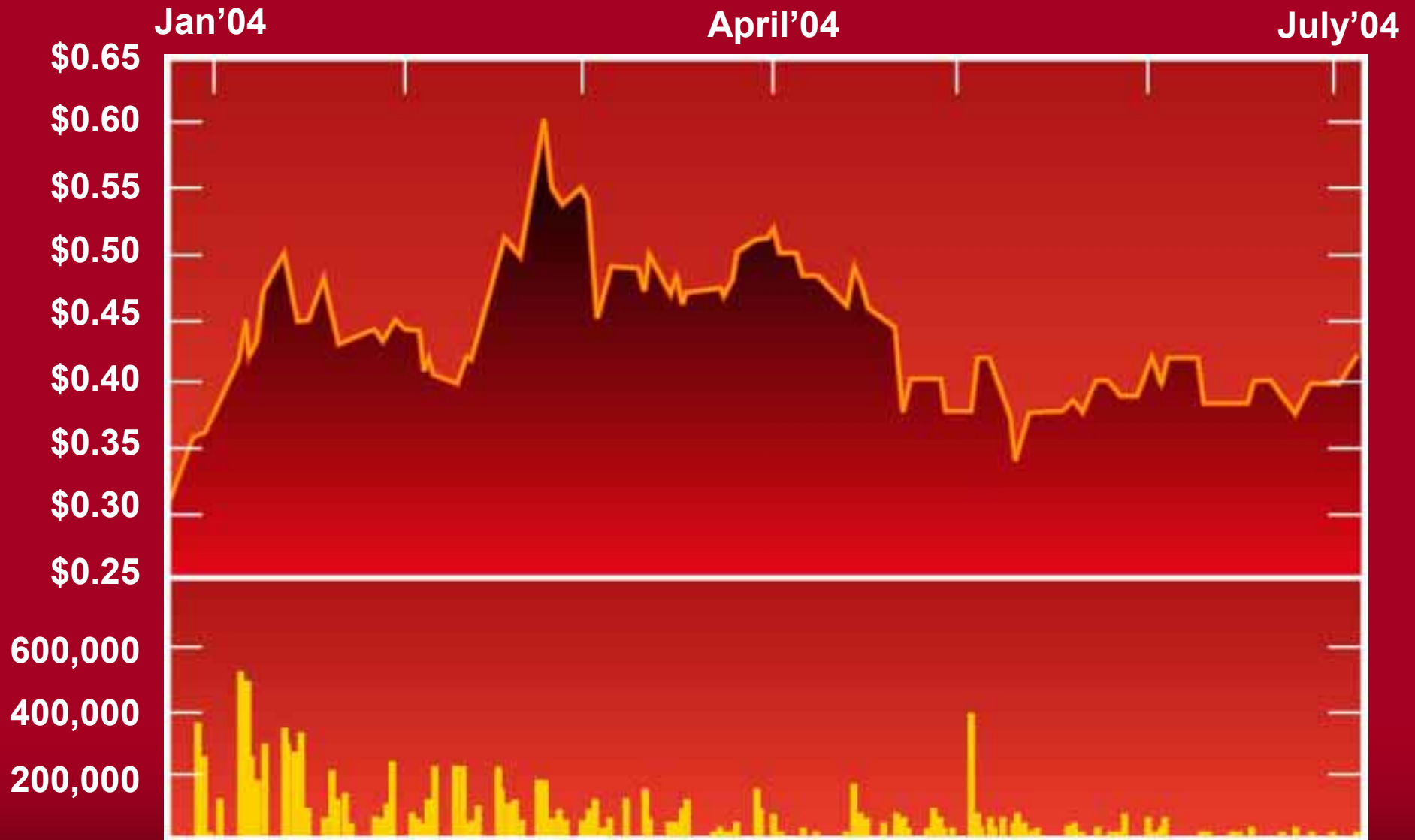
August 2004

MEDUSA MINING LTD

- Listed 23 December 2003, raised \$2.5M
- Total shares issued 36,805,100
- Total options issued 18,395,793 @ \$0.01 (expiry 31-1-2007)
- New raising A\$961,875 in July 2004



MEDUSA SHARE TRADING



Medusa Mining Ltd

OBJECTIVES

- **DEVELOP POSITIVE CASHFLOW**

Saugon - within 2 years

- **HIGH MARGIN PRODUCTION**

Low CAPEX

Low OPEX

High grade

- **EXPAND PROJECT AREAS**

- **SEEK NEW OPPORTUNITIES**



ACHIEVING OBJECTIVES

To achieve the objectives, **Medusa**

- is earning a 50% interest in the Saugon Gold Project in the Philippines
- purchased 3 gold projects in Western Australia
- acquired options over the Dizon and Marian Gold Projects



DIRECTORS

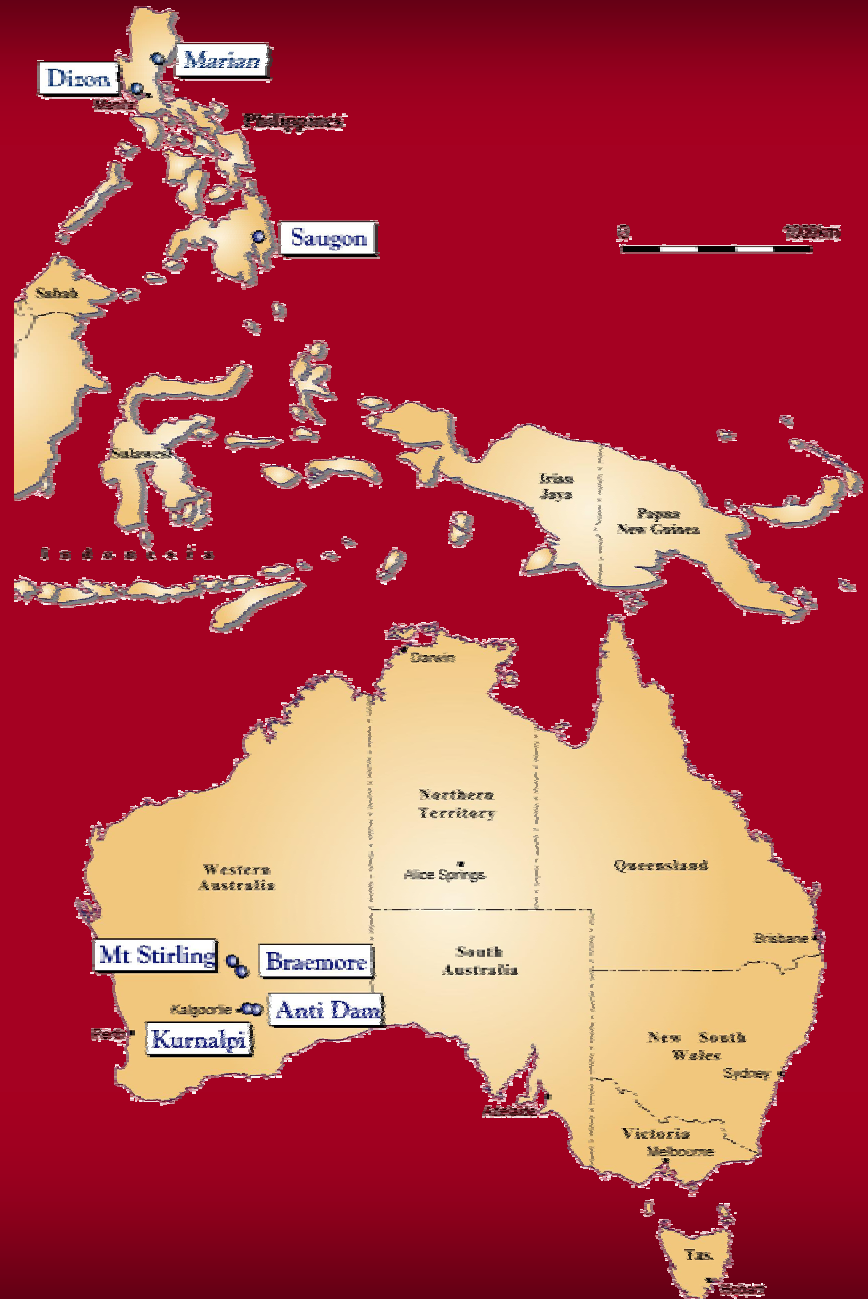
- **Dr Jeff Schiller** **Chairman**
- **Mr Geoff Davis** **Managing Director**
- **Mr Simon Cato** **Non Executive**
- **Mr Ted Mein** **Non Executive**

COMPANY SECRETARY

- **Mr Bruce Acutt**



PROJECT LOCATIONS



PHILIPPINE MAJOR GOLD AREAS and OPERATIONS



SAUGON JOINT VENTURE

- **Earning 50% equity for A\$1.2M**
- **150 tpd at >20 g/t Au**
- **Part of a newly recognised epithermal gold belt**
- **Large land holding >120km²**
- **Potential to add new land holdings**
- **700 tpd mill 28km from site**
- **Good logistics**



SAUGON LOCALITY and TENURE

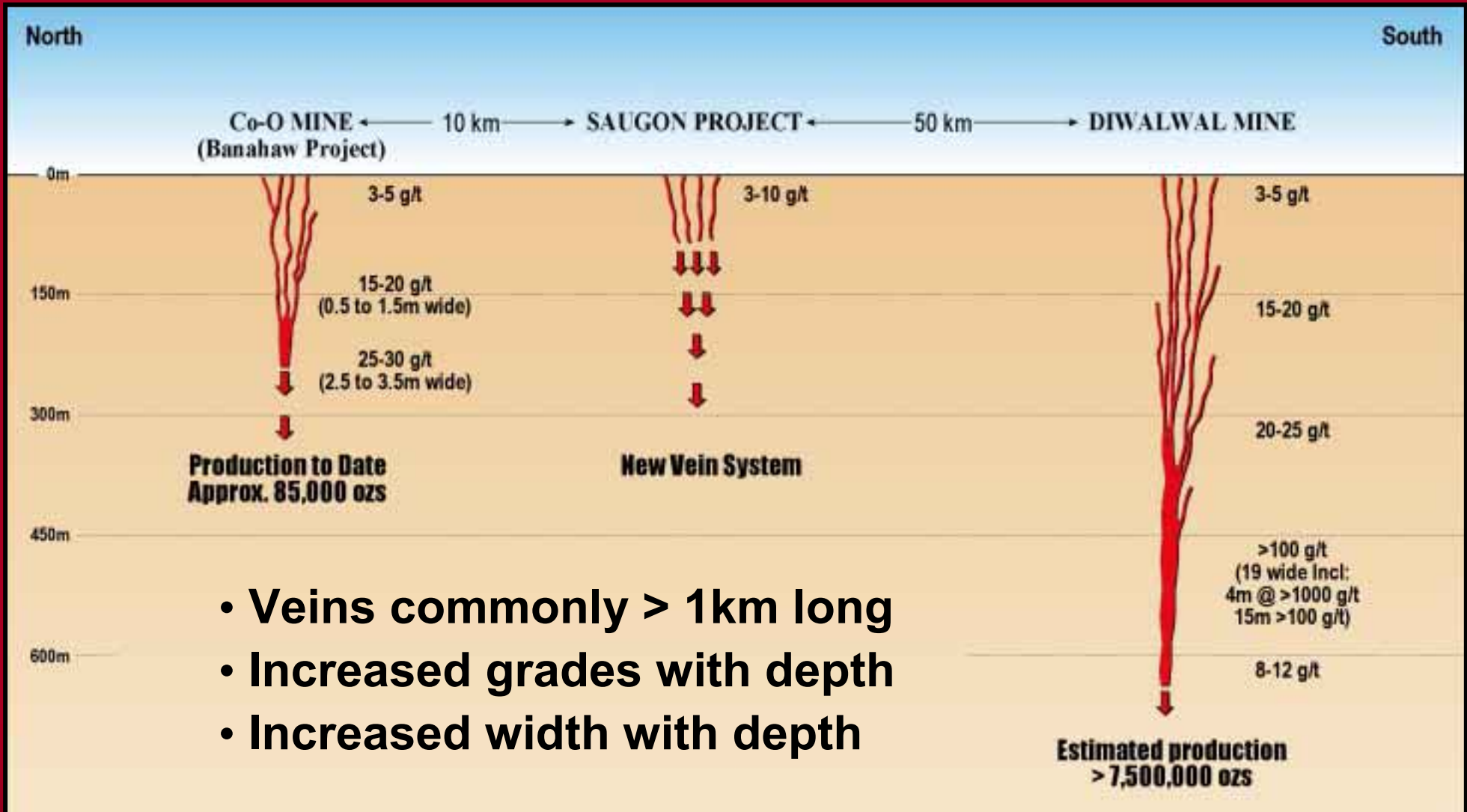
- WA Mining Act basis
- FTAA
- MPSA
- Exploration Permit
- SSMP



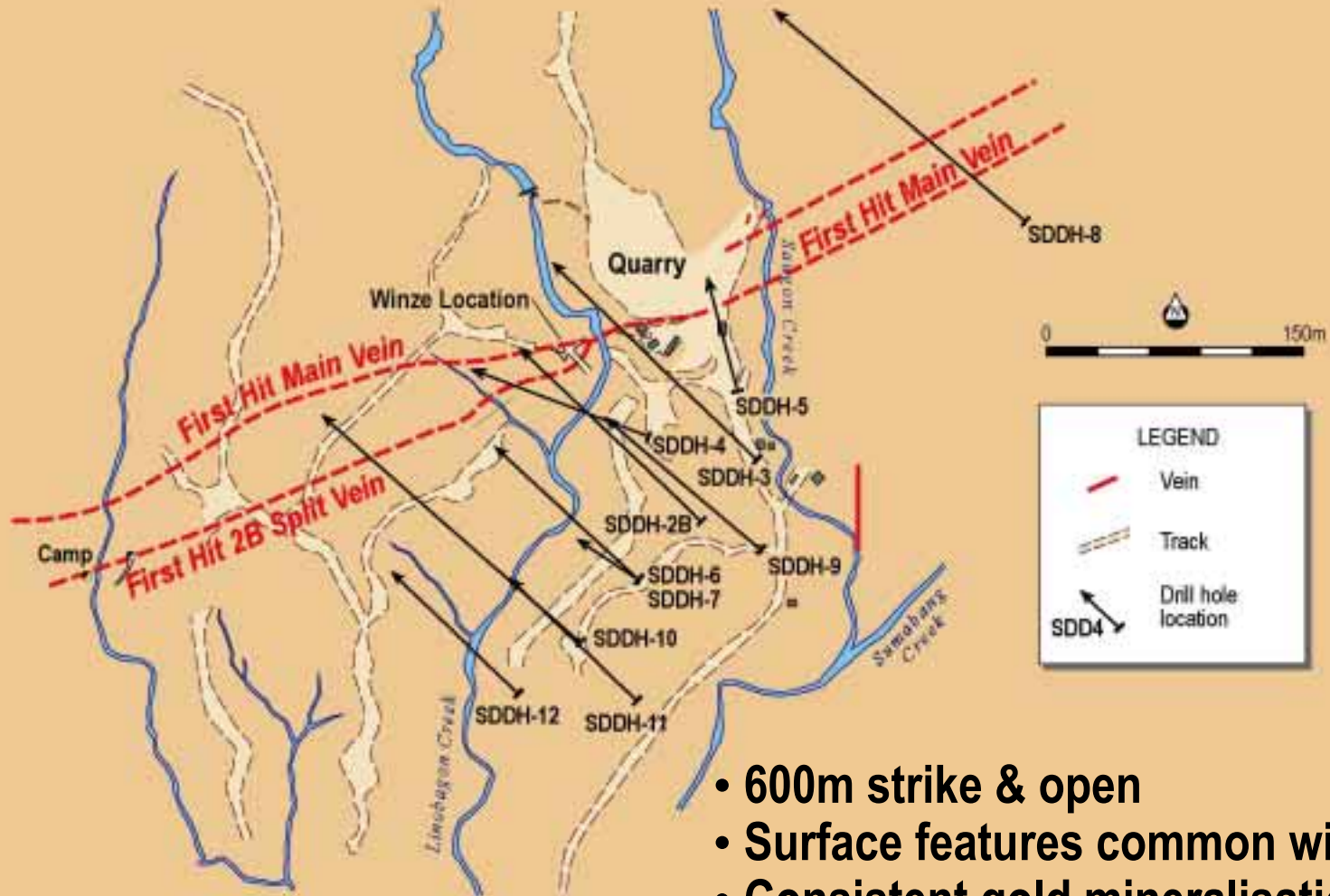
Medusa Mining Ltd



SAUGON: REGIONAL MINERALISATION PATTERNS



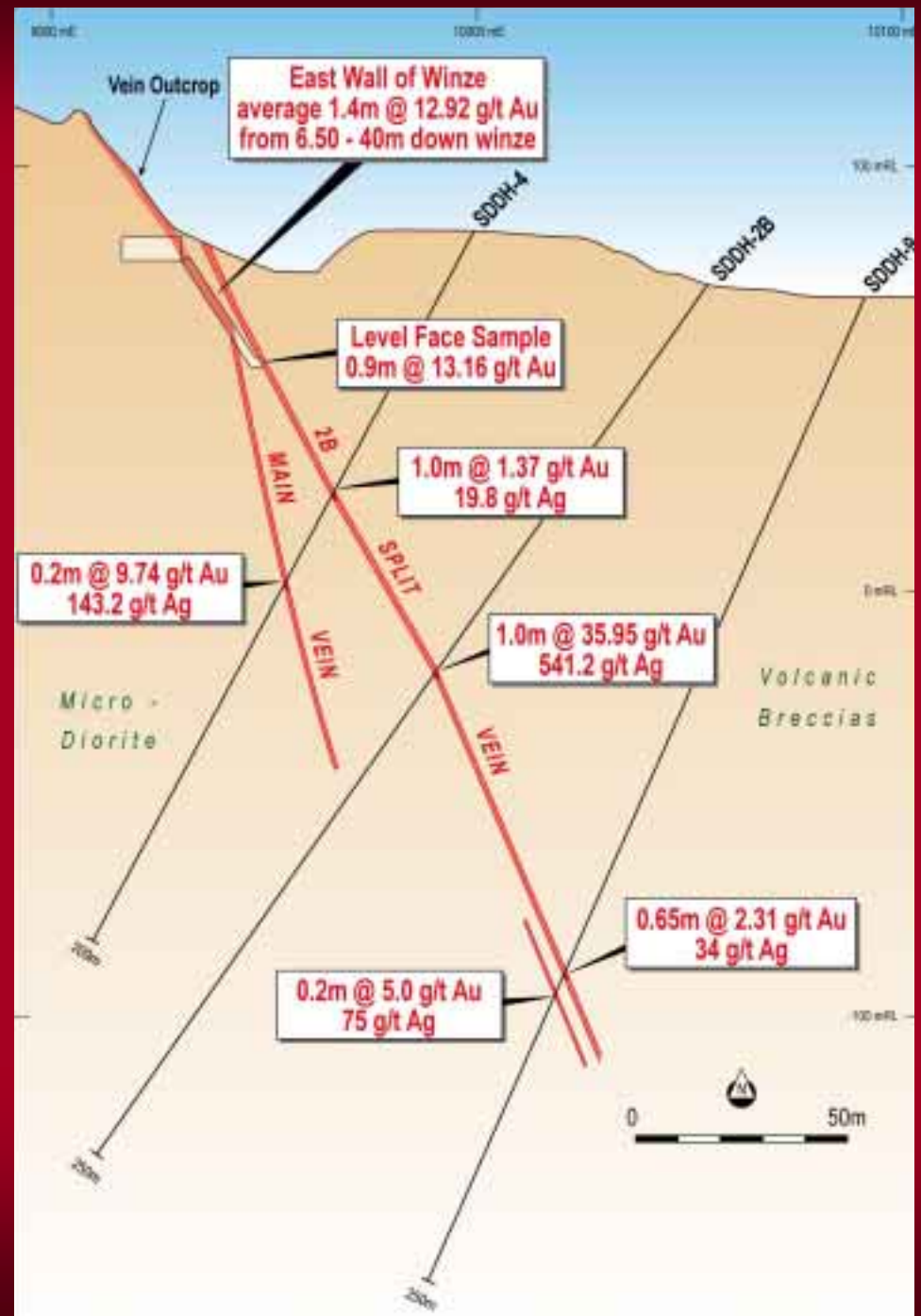
SAUGON: SURFACE GEOLOGY & ASSAYS



- 600m strike & open
- Surface features common with Co-O
- Consistent gold mineralisation
- Diagnostic lead & zinc



SAUGON: CROSS-SECTION 10150E Showing Winze & Vein Development



SAUGON WINZE SITE



TOP OF WINZE



QUARTZ VEIN IN EAST WALL OF WINZE



SAUGON WORK PROGRAM

- **EXPLORATION**
DDC holes & winze sinking
Mapping & sampling
- **EVALUATION**
Level development
Metallurgical testwork
- **DEVELOPMENT**
Infrastructure
Contract mining
Toll treatment
- **OPERATION**
150 tpd at > 20g/t Au



SAUGON PARTNER & LOGISTICS

- **EXPERIENCED JV PARTNER**
Mining, Admin. & Security
Corporate citizen
Three year operating history
- **OPERATIONAL PROCESSING PLANT**
Conventional CIL
98% gold recovery
- **COMPREHENSIVE INFRASTRUCTURE**
- **POSSIBLE US\$160/OZ CASH COST**
- **PAYBACK WITHIN 2 YEARS**



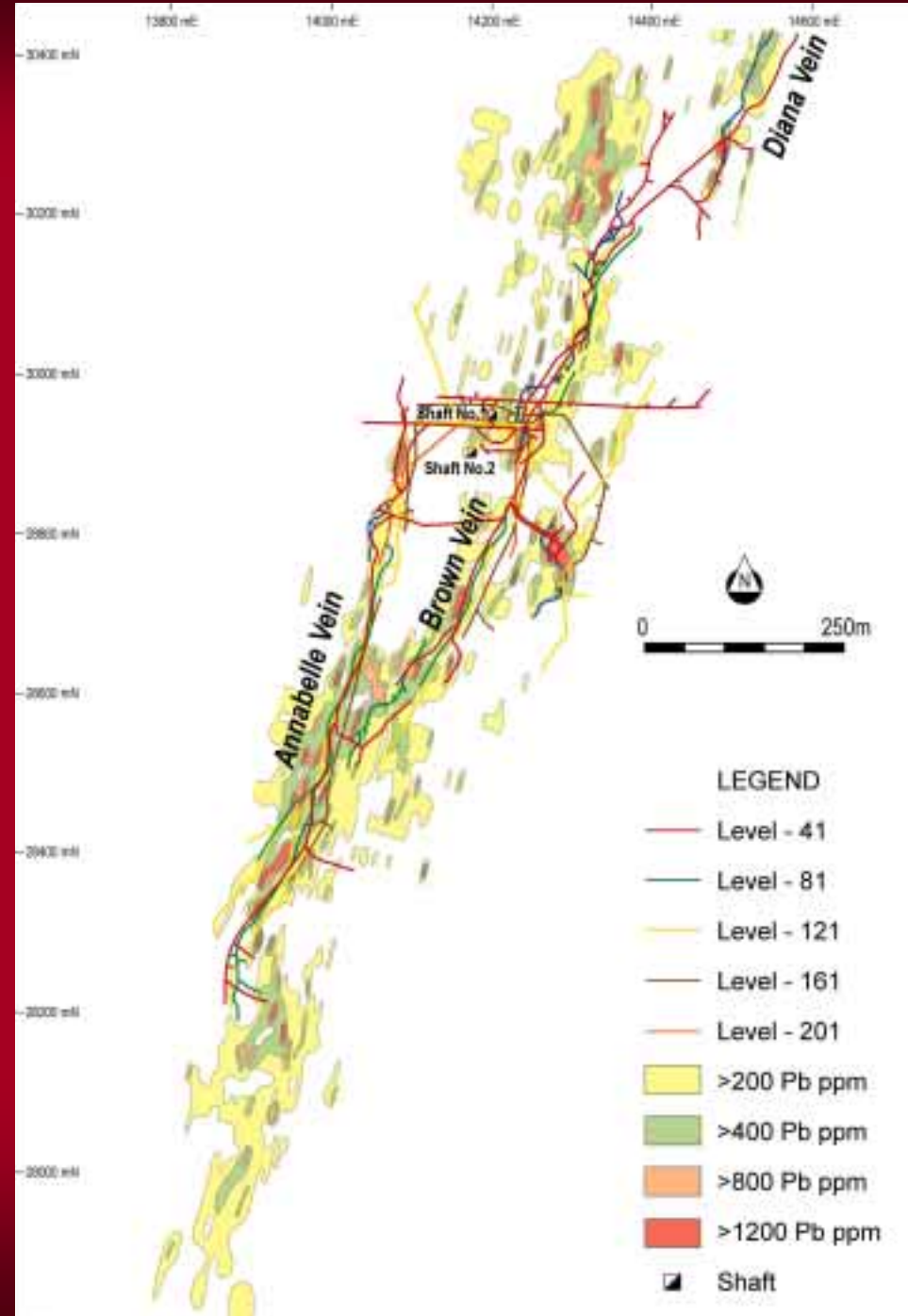
SAUGON PROJECT SECURITY

- **Community Relationships**
- **Management Expertise & Record**
- **Site Security**
- **State Security Presence**
- **Bullion Transport**
- **Short Exposure Period For Payback**



MARIAN GOLDMINE

Mine Plan & Surface Lead Anomalies





Medusa Mining Ltd

August 2004