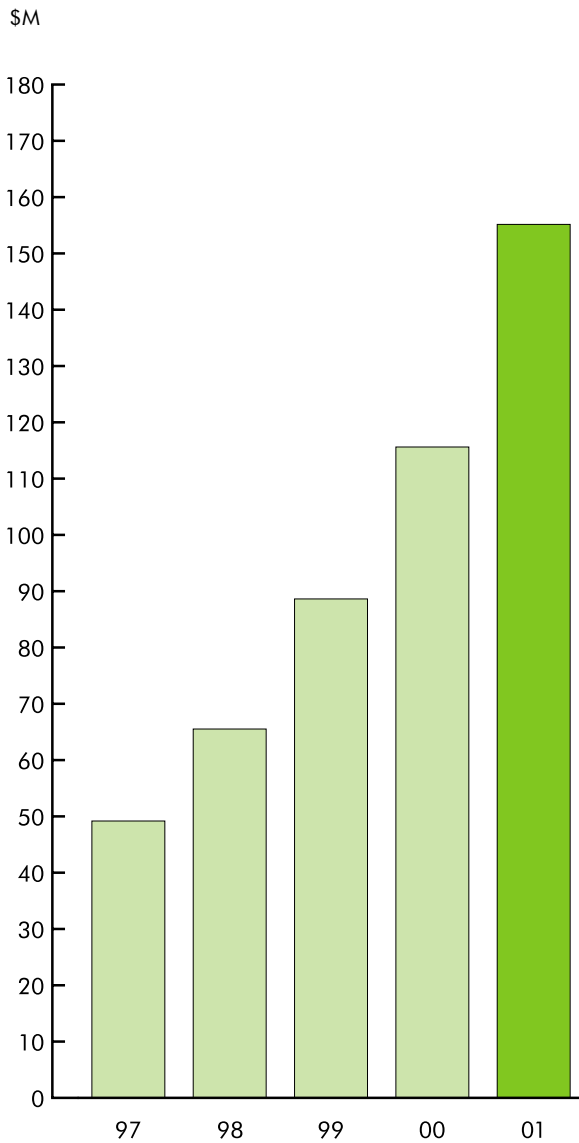
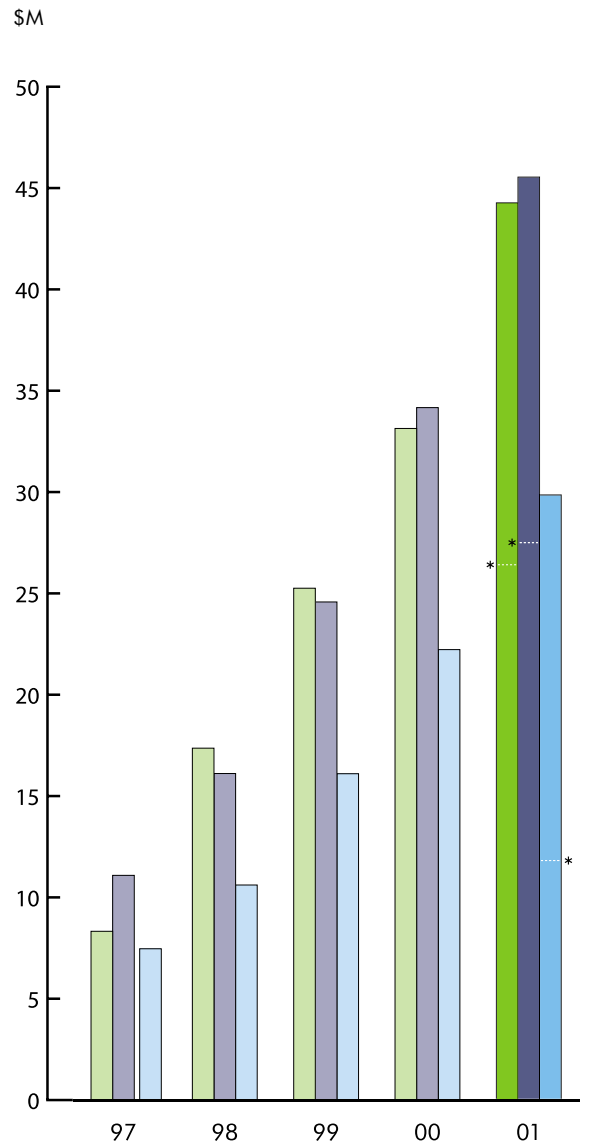


financial summary

Net revenue



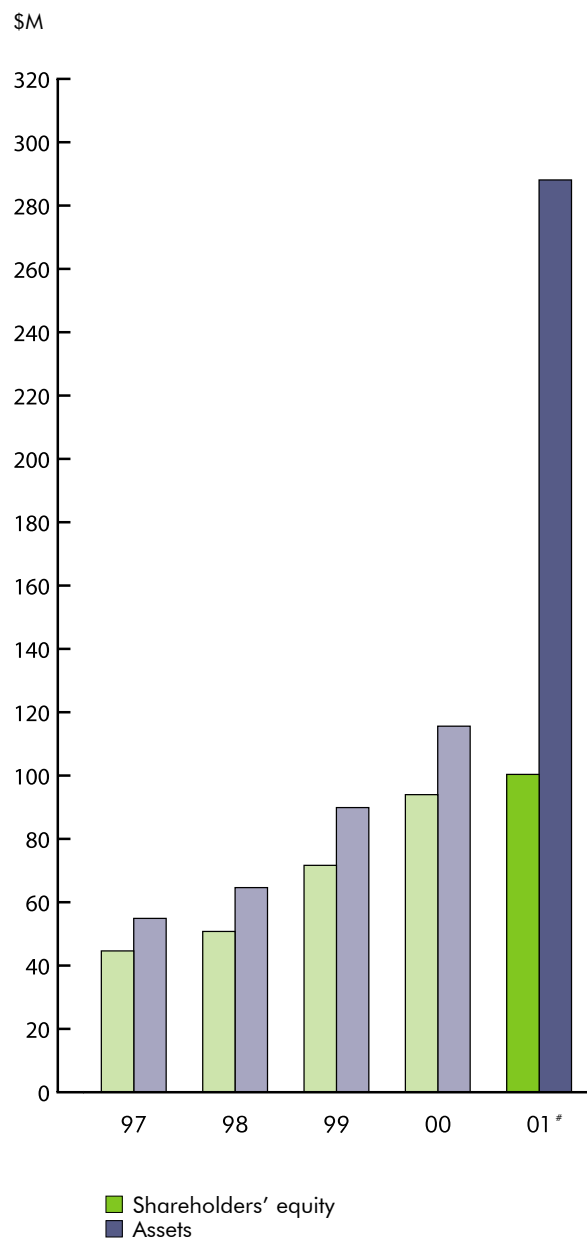
Income



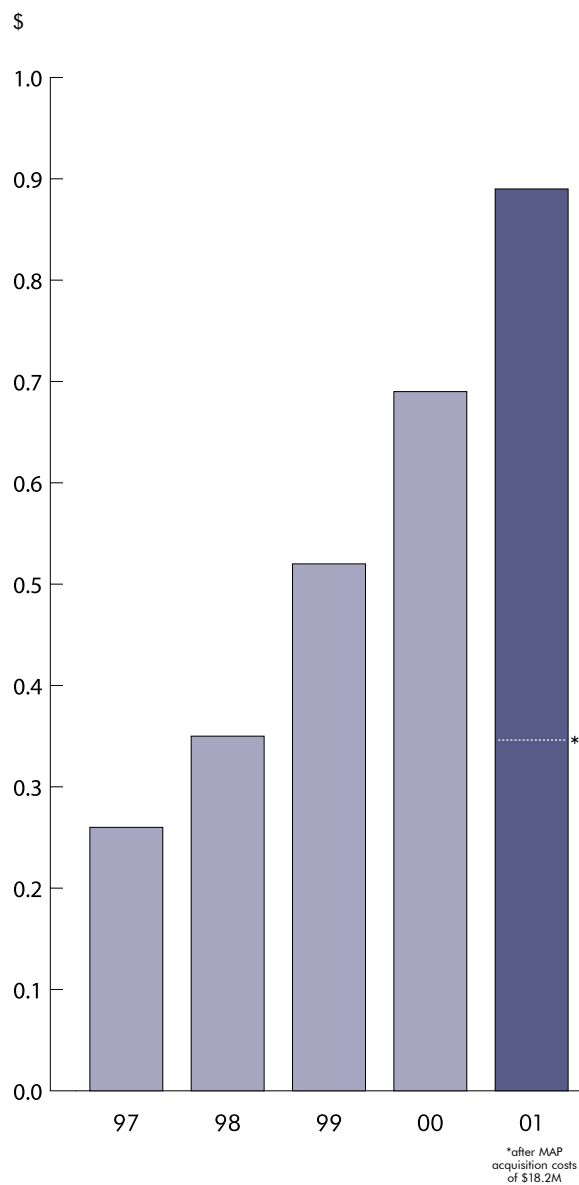
*after MAP acquisition costs of \$18.2M

- Income from operations
- Income before income taxes
- Net income

Assets and shareholders' equity



Net income per common share and equivalent



*Gross assets include \$61M of assets due to MAP acquisition. Shareholders' equity is net of \$18.2M of costs associated with MAP acquisition.