

29 February 2012

Unit 441 Skyline Apartments
30 Macrossan Street
Brisbane Qld 4000 Australia
GPO Box 3249
Brisbane Qld 4001 Australia
Tel +61 7 3333 2722
Email: enquiries@auzex.com
www.auzex.com

ASX RELEASE

Bullabulling Gold Project – Final Resource Infill Drilling Results

Highlights

- **Completed Phase Two infill drilling program results finalised.**
- **107 drill holes totalling 16,631m completed in November and December 2011.**
- **Total production for the Phase Two program is 74,542m in 425 holes.**
- **Development program drilling totals 110,544m in 672 drill holes from commencement in late 2010.**
- **Drilling results continue to reconcile well against the recent new resource model and include more new high grade intersections.**
- **New higher grade intersections include 8m at 5.73g/t Au, 1m at 73.10 g/t Au, 17m at 3.37 g/t Au, 8m at 3.35 g/t Au, 1m at 27.70 g/t Au, 9m at 3.52 g/t Au, 1m at 19.30 g/t Au.**
- **Data have been received from the recently completed seismic survey that enhances the prospectivity of high grade mineralisation at depth along the Bullabulling Trend.**

Resource drilling program update

The Phase Two RC resource drilling program, which commenced in mid-May 2011, has been completed and all assays have been returned. Three drill rigs were used during the Phase Two program, infilling the historic drilling between Phoenix and Hobbit to increase the confidence in the current resources and provide a new resource estimate (Figure 1).

Phase Two resource drilling program results - to establish sufficient reserves for an initial ten year mine life

The key aim of the Phase Two resource drilling program was to infill the historic drilling to a drill spacing that allows the Inferred resources in the recently announced resource estimate to be reclassified to an Indicated resource category, and in turn enable initial JORC compliant reserves to be established for the project as part of the current pre-feasibility study. The current reported JORC compliant mineral resource is 78,836,000 tonnes at 1.03 g/t Au (2.60 million ounces contained gold) at a 0.5 g/t Au cut off.

Since the last announcement, where results were reported from November 3 to the completion of the program on December 18 2011, there has been a total of 16,631 metres drilled in 107 holes (Table 1). Total drilling for the Phase Two program is now 74,542m in 425 holes and production since work started on the project by the JV is 110,544m from 672 holes. Work during the reporting period focussed on infill drilling of the areas between Hobbit and Bonecrusher (Figure 1).

The final assays from the infill drilling program continue to confirm the resource estimate and geological model (Table 2). For the reporting period, only 6 holes of the 107 drilled did not intersect mineralisation and since the beginning of the infill drilling program only 17 holes out of the 425 drilled have not intersected mineralisation. The final assays from the program returned a number of significant wide high grade intersections, including: 12m at 1.97g/t Au from 58m in BJ0045, **8m at 5.73g/t Au from 44m in BJ0103**, 34m at 0.66g/t Au from 138m in BJ0143, 14m at 1.94g/t Au from 44m in BJ0261, **4m at 5.34g/t Au from 125m in BJ0261**, **8m at 3.35g/t Au from 5m in BJ0347**, **14m at 2.41g/t Au from 21m in BJ0381**, 26m at 0.83g/t Au from 62m in BJ0381, 19m at 1.31g/t Au from 123m in BJ0384, 16m at 1.44g/t Au from 96m in BJ0394, **3m at 7.50g/t Au from 42m in BJ0526**, **1m at 27.70g/t Au from 180m in BJ0571**, 16m at 1.27g/t Au from 43m in BJ0644, 28m at 1.03g/t Au from 113m in BJ0662, 47m at 0.74g/t Au from 76m in BJ0686, 13m at 1.87g/t Au from 39m in BJ0694, **13m at 2.22g/t Au from 190m in BJ0697**, 29m at 0.87g/t Au from 179m in BJ0698, 25m at 0.98g/t Au from 28m in BJ0718, 29m at 0.95g/t Au from 60m in BJ0719, 19m at 1.46g/t Au from 128m in BJ0721, 41m at 0.90g/t Au from 26m in

BJ0732, 26m at 0.81g/t Au from 149m in BJ0736, **9m at 2.15g/t Au from 29m in BJ0769, 34m at 1.12g/t Au from 94m in BJ0772, 1m at 19.30g/t Au from 100m in BJ0774**, 31m at 0.75g/t Au from 36m in BJ0791, **17m at 3.37g/t Au from 182m in BJ1297**, 16m at 1.75g/t Au from 63m in BJ1297, 32m at 0.66g/t Au from 144m in BJ1844, **9m at 3.52g/t Au from 113m in BJ1945, 1m at 73.10g/t Au from 18m in BJ1979**, 14m at 1.54g/t Au from 35m in BJ1996, 18m at 1.60g/t Au from 146m in BJ2070, 17m at 1.15g/t Au from 42m in BJ2106, 17m at 1.27g/t Au from 144m in BJ2113, 25m at 1.06g/t Au from 153m in BJ2340, **12m at 2.12g/t Au from 179m in BJ2341, 8m at 2.44g/t Au from 37m in BJ2349**, 19m at 1.16g/t Au from 72m in BJ2361 and **17m at 2.24g/t Au from 189m in BJ2414**.

As in the previously announced holes, there are generally at least 4 intersections per drill hole relating to the multiple stacked lodes defined by the structural mapping. Approximately 63% of the intersections to date are better than estimated by the model, 30% are similar to the model and 7% are worse or missing as predicted by the new model developed by Snowden. High grade mineralisation continues to be intersected within the broad low grade halo with intersections such as providing additional encouragement for targeting high grade ore shoots within the Bullabulling Trend beneath the currently mineralised stratigraphy. Preliminary results from the magnetic and seismic surveys have located potential feeder zones to the low grade mineralisation in the near surface that may host more continuous higher grade mineralisation than intersected to date.

For further information please check our website (www.auzex.com) or contact John Lawton (Managing Director) or Greg Partington (Operations Director) on +617 3333 2722 and +6144800987 respectively.

Bullabulling Overview

The Bullabulling Gold project (Bullabulling) is a large tonnage, low grade deposit with high grade shoots, associated with the regional Bullabulling shear zone which extends over tens of kilometres. The mineralised structure is 500m wide, consisting of multiple west dipping low grade stacked zones with narrower higher grade gold mineralisation. Bullabulling is located near Coolgardie and approximately 65km south-west of Kalgoorlie, Western Australia. Bullabulling has been previously mined producing 371k oz Au in the 1990's. The current program focuses on the 6km portion of the shear zone known as the Bullabulling Trend where previous operations were concentrated. The focus for the

Bullabulling joint venture with GGG Resources plc is to establish an initial reserve exceeding one million ounces gold to commence production in 2015.

Competent Person Statement

The information in this report that relates to Exploration Results, Mineral Resources and Ore Reserves is based on information compiled by John Lawton who is a full-time employee of the Company and Member of The Australasian Institute of Mining and Metallurgy. He has sufficient experience that is relevant to the style of mineralisation and type of deposit under consideration and to the activity which he is undertaking to qualify as a Competent Person as defined in the 2004 Edition of the "Australasian Code for Reporting of Exploration Results, Mineral Resources and Ore Reserves". The latest August 2010 Mineral Resource estimate was completed under the overall supervision and direction of Steven Hodgson, MAIG, of CSA Global who is a Competent Person as defined by the Australasian Code for the Reporting of Exploration Results, Mineral Resources and Ore Reserves (JORC Code 2004 Edition). John Lawton and Steven Hodgson consent to the inclusion in this report of the matters based on the information in the form and context in which it appears.

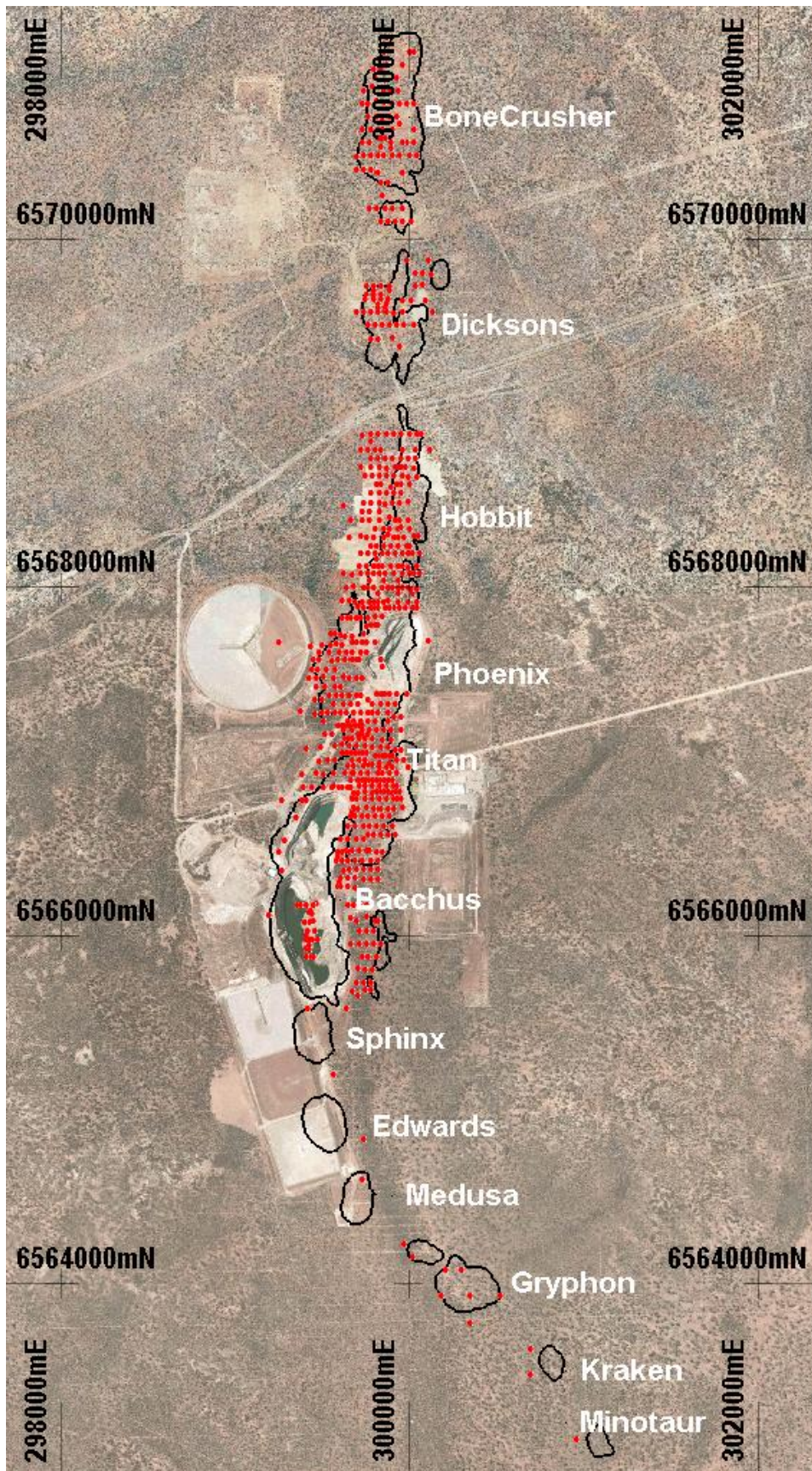


Figure 1: Location of completed RC drill holes (red dots) by the Joint Venture in relation to planned drill holes (black dots)

Table 1: Collar data for RC drilling between 3 November 2011 and 18 December 2011.

Hole	Easting	Northing	RL	Dip	AZ	Date	Length	Comments
BJ0044	299,675	6,566,929	430	-60	90	03/12/2011	181	Mineralised
BJ0337	299,434	6,567,658	442	-60	90	16/12/2011	271	Mineralised
BJ0379	300,004	6,568,236	452	-60	90	27/11/2011	139	Mineralised
BJ0506	299,907	6,569,430	449	-60	90	22/11/2011	151	Mineralised
BJ0507	299,828	6,569,423	448	-60	90	08/12/2011	121	Mineralised
BJ0509	299,784	6,569,423	446	-60	90	09/12/2011	145	Mineralised
BJ0524	299,976	6,569,502	450	-55	90	19/11/2011	199	Mineralised
BJ0525	299,932	6,569,502	450	-55	90	20/11/2011	211	Mineralised
BJ0526	299,890	6,569,502	448	-60	90	21/11/2011	97	Mineralised
BJ0529	299,767	6,569,502	447	-60	90	10/12/2011	151	Mineralised
BJ0542	300,102	6,569,647	446	-60	90	13/12/2011	139	Mineralised
BJ0545	299,964	6,569,647	448	-66	90	14/12/2011	205	Mineralised
BJ0559	300,085	6,569,798	444	-60	90	15/12/2011	162	Mineralised
BJ0560	300,042	6,569,799	445	-60	90	17/12/2011	144	Mineralised
BJ0564	300,081	6,569,730	447	-60	90	12/12/2011	145	Mineralised
BJ0566	300,127	6,569,795	444	-60	90	13/12/2011	144	Mineralised
BJ0607	300,018	6,570,098	437	-60	90	14/11/2011	103	Mineralised
BJ0608	299,965	6,570,099	438	-60	90	15/11/2011	121	Mineralised
BJ0609	299,923	6,570,099	438	-60	90	15/11/2011	130	Mineralised
BJ0610	299,880	6,570,098	439	-60	90	16/11/2011	175	Mineralised
BJ0611	299,839	6,570,097	438	-58	90	17/11/2011	181	Mineralised
BJ0620	299,966	6,570,173	435	-70	90	18/11/2011	133	Mineralised
BJ0621	299,906	6,570,172	438	-60	90	19/11/2011	151	Mineralised
BJ0622	299,867	6,570,172	435	-60	90	20/11/2011	175	Mineralised
BJ0643	299,886	6,570,322	439	-57	90	01/12/2011	156	Mineralised
BJ0644	299,844	6,570,321	439	-57	90	15/12/2011	211	Mineralised
BJ0664	299,700	6,570,396	437	-57	90	12/12/2011	211	Mineralised
BJ0679	300,051	6,570,474	438	-60	90	13/12/2011	157	Not Mineralised
BJ0689	299,702	6,570,471	435	-60	90	29/11/2011	205	Mineralised
BJ0693	299,964	6,570,550	437	-68	90	30/11/2011	175	Mineralised
BJ0698	299,736	6,570,549	437	-60	90	01/12/2011	247	Mineralised
BJ0719	299,847	6,570,626	436	-50	90	17/12/2011	163	Mineralised
BJ0721	299,781	6,570,625	437	-57	90	06/12/2011	241	Mineralised
BJ0722	299,738	6,570,623	436	-60	90	08/12/2011	229	Mineralised
BJ0732	299,891	6,570,700	431	-60	90	18/11/2011	169	Mineralised
BJ0735	299,816	6,570,700	432	-63	90	01/12/2011	181	Mineralised
BJ0736	299,768	6,570,699	436	-62	90	10/12/2011	229	Mineralised
BJ0768	299,988	6,570,775	435	-60	90	29/11/2011	121	Mineralised
BJ0769	299,948	6,570,773	432	-60	90	16/11/2011	139	Mineralised
BJ0770	299,906	6,570,777	434	-60	90	11/12/2011	163	Mineralised
BJ0772	299,821	6,570,787	435	-58	90	15/11/2011	175	Mineralised
BJ0774	299,737	6,570,777	435	-60	90	13/11/2011	217	Mineralised

Hole	Easting	Northing	RL	Dip	AZ	Date	Length	Comments
BJ0809	299,741	6,570,852	435	-60	90	22/11/2011	223	Not Mineralised
BJ0831	299,877	6,570,998	435	-60	90	12/11/2011	151	Mineralised
BJ0834	299,970	6,570,998	430	-60	90	14/11/2011	103	Not Mineralised
BJ0863	300,005	6,571,071	435	-76	90	13/11/2011	91	Mineralised
BJ0877	299,871	6,571,149	434	-60	90	13/11/2011	169	Not Mineralised
BJ1258	299,837	6,568,635	456	-60	90	06/11/2011	198	Mineralised
BJ1259	299,794	6,568,635	456	-62	90	24/11/2011	229	Mineralised
BJ1260	299,754	6,568,634	454	-60	90	26/11/2011	241	Mineralised
BJ1455	299,745	6,568,482	452	-60	90	24/11/2011	259	Mineralised
BJ1959	299,785	6,568,537	453	-60	90	05/11/2011	241	Mineralised
BJ1973	299,706	6,565,653	424	-60	90	21/11/2011	120	Mineralised
BJ1977	299,788	6,565,724	424	-60	90	19/11/2011	84	Mineralised
BJ1979	299,702	6,565,725	424	-60	90	20/11/2011	108	Mineralised
BJ1983	299,799	6,566,026	426	-60	90	10/11/2011	72	Not Mineralised
BJ1985	299,715	6,566,022	426	-60	90	11/11/2011	102	Mineralised
BJ1992	299,824	6,566,425	429	-60	90	22/11/2011	120	Mineralised
BJ2001	299,907	6,566,626	431	-60	90	26/11/2011	78	Not Mineralised
BJ2002	299,863	6,566,625	430	-60	90	26/11/2011	96	Mineralised
BJ2124	300,033	6,570,548	438	-60	90	11/11/2011	127	Mineralised
BJ2146	299,788	6,568,877	452	-60	90	28/11/2011	217	Mineralised
BJ2163	299,491	6,566,999	432	-61	90	28/11/2011	241	Mineralised
BJ2190	299,448	6,567,523	435	-63	90	26/11/2011	253	Mineralised
BJ2199	299,691	6,566,627	429	-60	90	28/11/2011	192	Mineralised
BJ2278	299,739	6,566,321	427	-60	90	03/11/2011	108	Mineralised
BJ2279	299,696	6,566,325	427	-60	90	04/11/2011	132	Mineralised
BJ2281	299,610	6,566,325	428	-60	170	11/12/2011	168	Mineralised
BJ2305	299,795	6,565,800	425	-60	90	17/11/2011	78	Mineralised
BJ2306	299,755	6,565,802	425	-60	90	18/11/2011	108	Mineralised
BJ2307	299,710	6,565,804	425	-60	90	18/11/2011	126	Mineralised
BJ2310	299,767	6,565,876	425	-60	90	15/11/2011	102	Mineralised
BJ2311	299,733	6,565,875	425	-60	90	16/11/2011	108	Mineralised
BJ2314	299,843	6,565,951	426	-60	90	15/11/2011	60	Mineralised
BJ2315	299,799	6,565,951	426	-60	90	12/11/2011	84	Not Mineralised
BJ2316	299,758	6,565,951	425	-60	90	13/11/2011	102	Mineralised
BJ2317	299,715	6,565,950	425	-60	90	13/11/2011	120	Mineralised
BJ2318	299,673	6,565,951	425	-60	90	14/11/2011	138	Mineralised
BJ2322	299,758	6,566,101	426	-60	90	08/11/2011	108	Mineralised
BJ2323	299,668	6,566,098	426	-60	90	09/11/2011	138	Mineralised
BJ2326	299,720	6,566,173	428	-60	90	07/11/2011	90	Mineralised
BJ2327	299,688	6,566,174	427	-60	90	04/12/2011	109	Mineralised
BJ2331	299,592	6,566,275	428	-67	90	05/11/2011	192	Mineralised
BJ2332	299,625	6,566,372	428	-60	90	25/11/2011	210	Mineralised
BJ2339	299,681	6,566,707	429	-70	270	02/12/2011	253	Mineralised
BJ2340	299,675	6,566,785	430	-70	270	04/12/2011	229	Mineralised

Hole	Easting	Northing	RL	Dip	AZ	Date	Length	Comments
BJ2342	299,584	6,566,425	428	-64	90	08/12/2011	205	Mineralised
BJ2345	299,829	6,569,574	445	-60	90	07/11/2011	139	Mineralised
BJ2346	299,872	6,569,574	448	-60	90	07/11/2011	121	Mineralised
BJ2347	299,914	6,569,573	449	-60	90	11/11/2011	103	Mineralised
BJ2348	299,829	6,569,598	446	-60	90	08/11/2011	139	Mineralised
BJ2349	299,871	6,569,599	447	-60	90	08/11/2011	103	Mineralised
BJ2350	299,829	6,569,622	446	-60	90	06/11/2011	139	Mineralised
BJ2351	299,872	6,569,624	448	-60	90	06/11/2011	103	Mineralised
BJ2352	299,802	6,569,648	445	-60	90	09/11/2011	163	Mineralised
BJ2353	299,842	6,569,649	447	-60	90	09/11/2011	145	Mineralised
BJ2354	299,884	6,569,648	449	-60	90	08/11/2011	121	Mineralised
BJ2355	299,759	6,569,674	443	-60	90	08/11/2011	163	Mineralised
BJ2356	299,801	6,569,675	446	-60	90	07/11/2011	139	Mineralised
BJ2357	299,843	6,569,674	447	-60	90	06/11/2011	121	Mineralised
BJ2358	299,802	6,569,700	446	-60	90	10/11/2011	139	Mineralised
BJ2359	299,889	6,569,701	448	-60	90	11/11/2011	103	Mineralised
BJ2360	299,759	6,569,725	443	-60	90	11/11/2011	163	Mineralised
BJ2361	299,802	6,569,726	445	-60	90	09/11/2011	139	Mineralised
BJ2362	299,844	6,569,724	444	-60	90	09/11/2011	121	Mineralised
BJ2412	299,597	6,566,451	428	-80	270	07/12/2011	199	Mineralised
BJ2414	299,602	6,566,304	428	-80	270	10/12/2011	222	Mineralised

Table 2: Intersection summary from drill assays received between 3 November 2011 and 18 December 2011.

Hole	From	To	Width	Au g/t	Includes
BJ0044	119	126	7	1.10	
BJ0045	58	70	12	1.97	1m @ 16.00 g/t from 58m
BJ0078	142	161	19	0.72	
BJ0103	44	52	8	5.73	1m @ 42.40 g/t from 48m
BJ0103	25	41	16	1.03	4m @ 2.81 g/t from 34m
BJ0143	138	172	34	0.66	
BJ0192	164	170	6	1.36	
BJ0196	152	165	13	0.96	
BJ0198	104	115	11	1.10	
BJ0198	158	173	15	0.65	
BJ0251	105	116	11	1.73	
BJ0251	133	147	14	1.28	
BJ0255	286	300	14	0.55	
BJ0261	44	58	14	1.94	7m @ 3.12 g/t from 44m
BJ0261	125	129	4	5.34	1m @ 17.30 g/t from 125m
BJ0261	75	79	4	2.15	
BJ0261	100	103	3	2.42	
BJ0273	152	166	14	0.51	
BJ0347	5	13	8	3.35	5m @ 5.08 g/t from 5m
BJ0347	19	44	25	0.76	
BJ0379	27	44	17	0.53	
BJ0381	21	35	14	2.41	4m @ 6.00 g/t from 28m
BJ0381	62	88	26	0.83	
BJ0381	154	162	8	1.54	
BJ0381	96	111	15	0.70	
BJ0381	126	132	6	1.51	
BJ0384	123	142	19	1.31	
BJ0384	68	92	24	0.56	
BJ0384	161	173	12	0.95	
BJ0384	178	185	7	1.19	
BJ0393	36	38	2	4.52	
BJ0394	96	112	16	1.44	2m @ 8.52 g/t from 101m
BJ0394	67	89	22	0.75	
BJ0394	117	132	15	0.50	
BJ0406	184	205	21	0.60	
BJ0407	145	164	19	0.76	
BJ0407	103	119	16	0.62	
BJ0407	126	134	8	1.05	
BJ0448	55	68	13	1.09	
BJ0448	95	105	10	0.77	
BJ0448	47	50	3	2.38	
BJ0473	41	62	21	0.36	
BJ0473	29	36	7	1.01	

Hole	From	To	Width	Au g/t	Includes
BJ0477	103	120	17	1.01	
BJ0477	63	72	9	0.90	
BJ0478	141	155	14	1.08	
BJ0478	136	140	4	3.26	
BJ0479	86	93	7	1.42	
BJ0479	62	67	5	1.74	
BJ0507	40	57	17	1.08	
BJ0509	85	103	18	0.53	
BJ0524	25	42	17	0.88	
BJ0526	42	45	3	7.50	1m @ 21.60 g/t from 42m
BJ0526	33	35	2	4.97	
BJ0541	173	174	1	16.70	
BJ0544	150	158	8	1.00	
BJ0545	176	182	6	1.33	
BJ0567	140	146	6	2.93	
BJ0571	180	181	1	27.70	
BJ0571	54	56	2	3.53	
BJ0608	36	49	13	0.95	
BJ0609	25	37	12	0.81	
BJ0610	21	34	13	0.74	
BJ0611	87	98	11	1.38	
BJ0611	55	65	10	0.84	
BJ0620	69	81	12	1.07	
BJ0621	32	56	24	0.52	
BJ0621	15	24	9	0.81	
BJ0622	45	54	9	1.07	
BJ0622	163	171	8	0.99	
BJ0624	83	96	13	0.75	
BJ0633	76	94	18	0.70	
BJ0643	54	65	11	0.68	
BJ0644	43	59	16	1.27	
BJ0644	88	96	8	1.12	
BJ0662	113	141	28	1.03	
BJ0663	145	159	14	1.03	
BJ0664	193	211	18	0.91	
BJ0683	39	58	19	0.72	
BJ0686	76	123	47	0.74	
BJ0688	165	188	23	0.43	
BJ0693	70	79	9	0.78	
BJ0694	39	52	13	1.87	
BJ0694	165	169	4	4.57	
BJ0694	121	126	5	1.60	
BJ0697	190	203	13	2.22	2m @ 11.96 g/t from 194m
BJ0697	133	151	18	1.05	

Hole	From	To	Width	Au g/t	Includes
BJ0698	179	208	29	0.87	
BJ0718	28	53	25	0.98	7m @ 1.87 g/t from 36m
BJ0718	104	119	15	0.87	
BJ0718	79	85	6	1.43	
BJ0719	60	89	29	0.95	
BJ0719	114	117	3	3.37	
BJ0719	146	157	11	0.91	
BJ0720	91	113	22	0.75	
BJ0721	128	147	19	1.46	3m @ 5.18 g/t from 135m
BJ0721	175	187	12	0.73	
BJ0722	178	194	16	0.95	
BJ0731	67	70	3	2.43	
BJ0732	26	67	41	0.90	
BJ0732	110	129	19	0.56	
BJ0732	82	95	13	0.56	
BJ0735	151	181	30	0.55	
BJ0735	95	125	30	0.51	
BJ0736	149	175	26	0.81	
BJ0736	213	220	7	1.04	
BJ0769	29	38	9	2.15	2m @ 8.38 g/t from 35m
BJ0769	134	138	4	1.89	
BJ0770	37	57	20	0.89	
BJ0770	96	103	7	2.00	
BJ0770	70	90	20	0.56	
BJ0772	94	128	34	1.12	5m @ 2.76 g/t from 116m
BJ0774	100	101	1	19.30	
BJ0774	188	212	24	0.54	
BJ0785	25	49	24	0.74	
BJ0785	56	65	9	1.33	
BJ0791	36	67	31	0.75	
BJ0792	73	90	17	0.64	
BJ0816	35	42	7	1.46	
BJ0816	58	67	9	0.88	
BJ0831	60	76	16	0.81	
BJ1253	13	23	10	1.11	
BJ1258	180	197	17	0.80	
BJ1259	138	156	18	0.67	
BJ1259	209	218	9	0.89	
BJ1260	101	103	2	3.74	
BJ1297	182	199	17	3.37	1m @ 48.80 g/t from 182m
BJ1297	63	79	16	1.75	3m @ 7.46 g/t from 69m
BJ1297	127	138	11	1.08	
BJ1353	192	209	17	0.58	
BJ1353	101	105	4	2.09	

Hole	From	To	Width	Au g/t	Includes
BJ1844	144	176	32	0.66	
BJ1844	189	193	4	2.72	
BJ1844	211	224	13	0.69	
BJ1945	113	122	9	3.52	1m @ 28.50 g/t from 119m
BJ1959	185	193	8	1.97	
BJ1973	47	53	6	1.46	
BJ1979	18	19	1	73.10	
BJ1993	44	54	10	0.73	
BJ1996	35	49	14	1.54	
BJ1996	126	138	12	1.17	
BJ1996	115	121	6	1.88	
BJ2012	28	42	14	0.50	
BJ2031	150	171	21	0.65	
BJ2031	46	67	21	0.54	
BJ2031	73	77	4	1.82	
BJ2047	156	163	7	1.78	
BJ2053	157	161	4	2.68	
BJ2053	88	98	10	0.78	
BJ2065	206	218	12	0.61	
BJ2070	146	164	18	1.60	2m @ 8.76 g/t from 146m
BJ2070	237	248	11	1.19	
BJ2083	130	136	6	2.01	
BJ2083	35	47	12	0.81	
BJ2085	55	57	2	5.01	
BJ2106	42	59	17	1.15	
BJ2112	140	147	7	1.53	
BJ2112	108	115	7	1.16	
BJ2112	51	55	4	1.80	
BJ2113	144	161	17	1.27	5m @ 2.54 g/t from 147m
BJ2146	120	128	8	1.52	
BJ2163	189	204	15	0.82	
BJ2163	165	177	12	0.64	
BJ2163	227	241	14	0.55	
BJ2188	179	199	20	0.52	
BJ2188	209	220	11	0.85	
BJ2190	210	233	23	0.51	
BJ2190	240	243	3	3.53	
BJ2199	145	161	16	0.92	
BJ2301	45	57	12	0.83	
BJ2301	130	143	13	0.61	
BJ2326	53	68	15	0.58	
BJ2338	76	78	2	3.99	
BJ2339	188	202	14	1.19	
BJ2340	153	178	25	1.06	

Hole	From	To	Width	Au g/t	Includes	
BJ2341	179	191	12	2.12	3m @ 6.58 g/t from 181m	
BJ2341	57	70	13	0.72		
BJ2341	147	161	14	0.58		
BJ2342	157	168	11	1.50		
BJ2343	79	82	3	3.69		
BJ2343	115	120	5	1.57		
BJ2344	81	93	12	0.90		
BJ2344	58	76	18	0.56		
BJ2345	49	61	12	1.16		
BJ2347	61	65	4	2.14		
BJ2347	96	101	5	1.58		
BJ2348	51	65	14	0.99		
BJ2349	37	45	8	2.44		3m @ 5.44 g/t from 39m
BJ2349	50	58	8	1.49		
BJ2350	62	74	12	0.95		
BJ2352	67	81	14	0.59		
BJ2353	54	66	12	0.60		
BJ2355	131	136	5	1.50		
BJ2355	146	149	3	2.36		
BJ2356	116	126	10	1.17		
BJ2356	134	138	4	2.66		
BJ2357	70	76	6	2.11	4m @ 2.94 g/t from 72m	
BJ2357	46	57	11	1.00		
BJ2360	120	137	17	0.54		
BJ2361	72	91	19	1.16		
BJ2362	59	70	11	0.97		
BJ2412	179	193	14	1.08		
BJ2414	189	206	17	2.24	4m @ 6.48 g/t from 193m	

