

A photograph of the Washington Hospital Center building, a large multi-story structure with many windows. The building is the background for the text. In the foreground, there is a green lawn and some trees. The text is overlaid on the image.

***MiniVADs Will Be Most
Effective and Economical
Treatment for ESHF***

Steven W. Boyce, M.D.

Surgical Director, Congestive Heart Failure Program

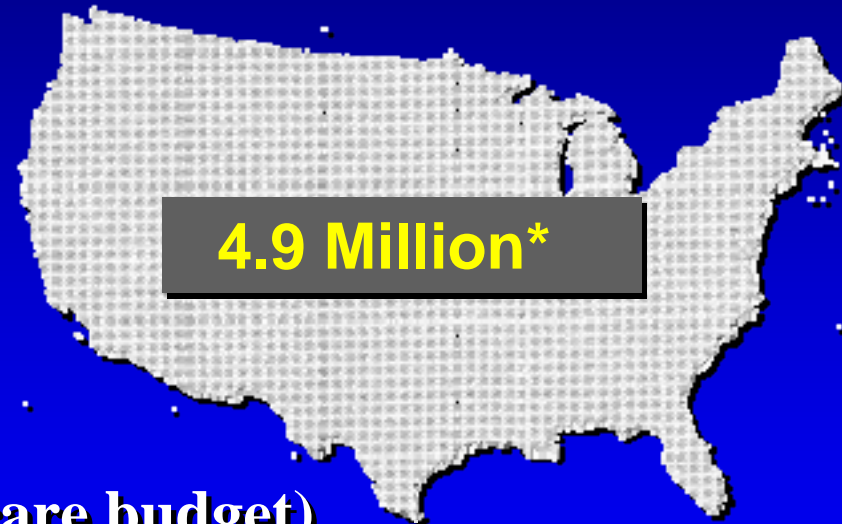
Washington Hospital Center

Washington, D.C.

End-Stage Heart Failure

The Epidemic

- **Nearly 5 million people in USA currently diagnosed with CHF (15 million worldwide)**
 - 1 million NYHA III
 - 0.5 million NYHA IV
- **550,000 new cases/year**
- **Over 287,000 deaths/yr**
- **CHF is the #1 DRG (\$52 B or > 5% of the healthcare budget)**
- **WHO predicts CHF will be the leading cause of mortality in the world by 2010**



**Heart and Stroke: American Heart Association, 1997*

End-Stage Heart Failure

Morbidity and Mortality

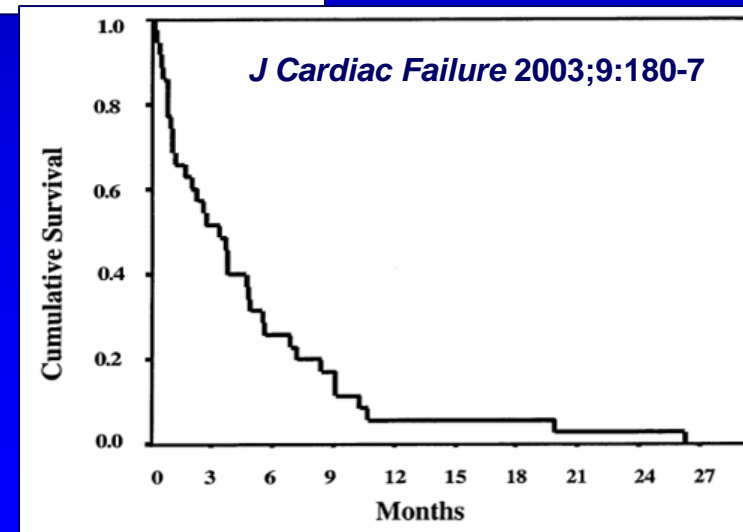
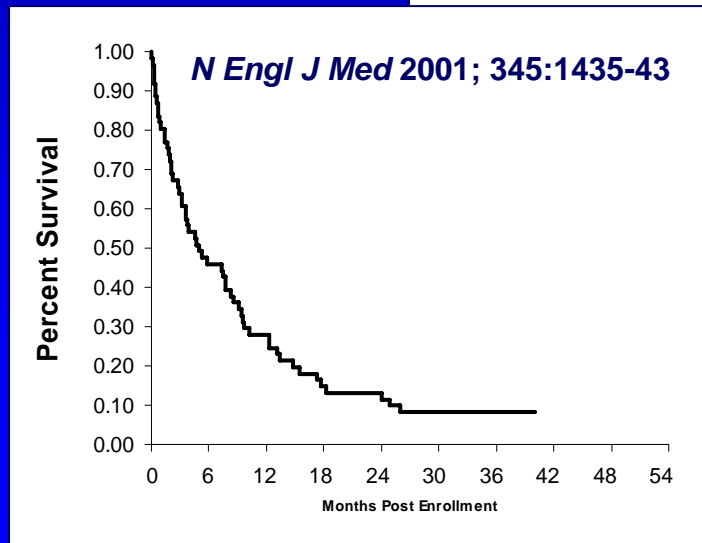
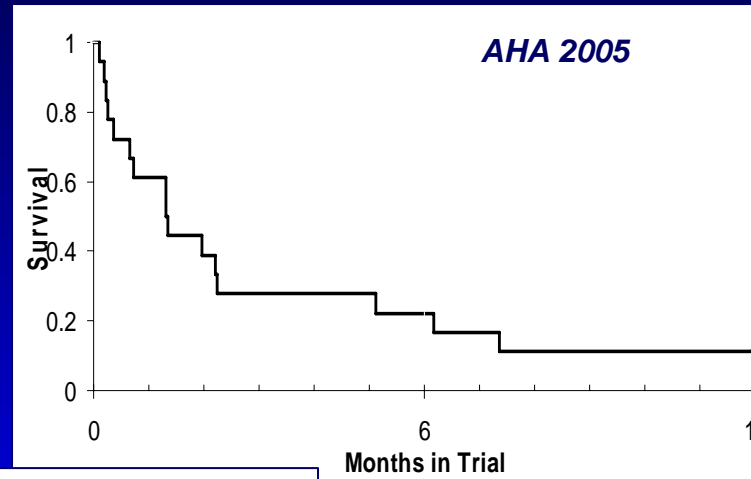
- **Stage D HF has 30-78% mortality/yr, with only 30% being sudden death**
(Davis, et al. Am J Hospice and Palliative Medicine. 22 (3); May/June 2005: 211-22).
- **COSI* Study of 36 inotrope-dependent stage D HF pts: 46 re hosp, median survival 3.4 mos, with 6% one year survival**
(Hershberger RE, et al. J Card Fail. 2003 Jun; 9(3): 188-91).



* *COSI: Continuous Outpatient Support with Inotropes*

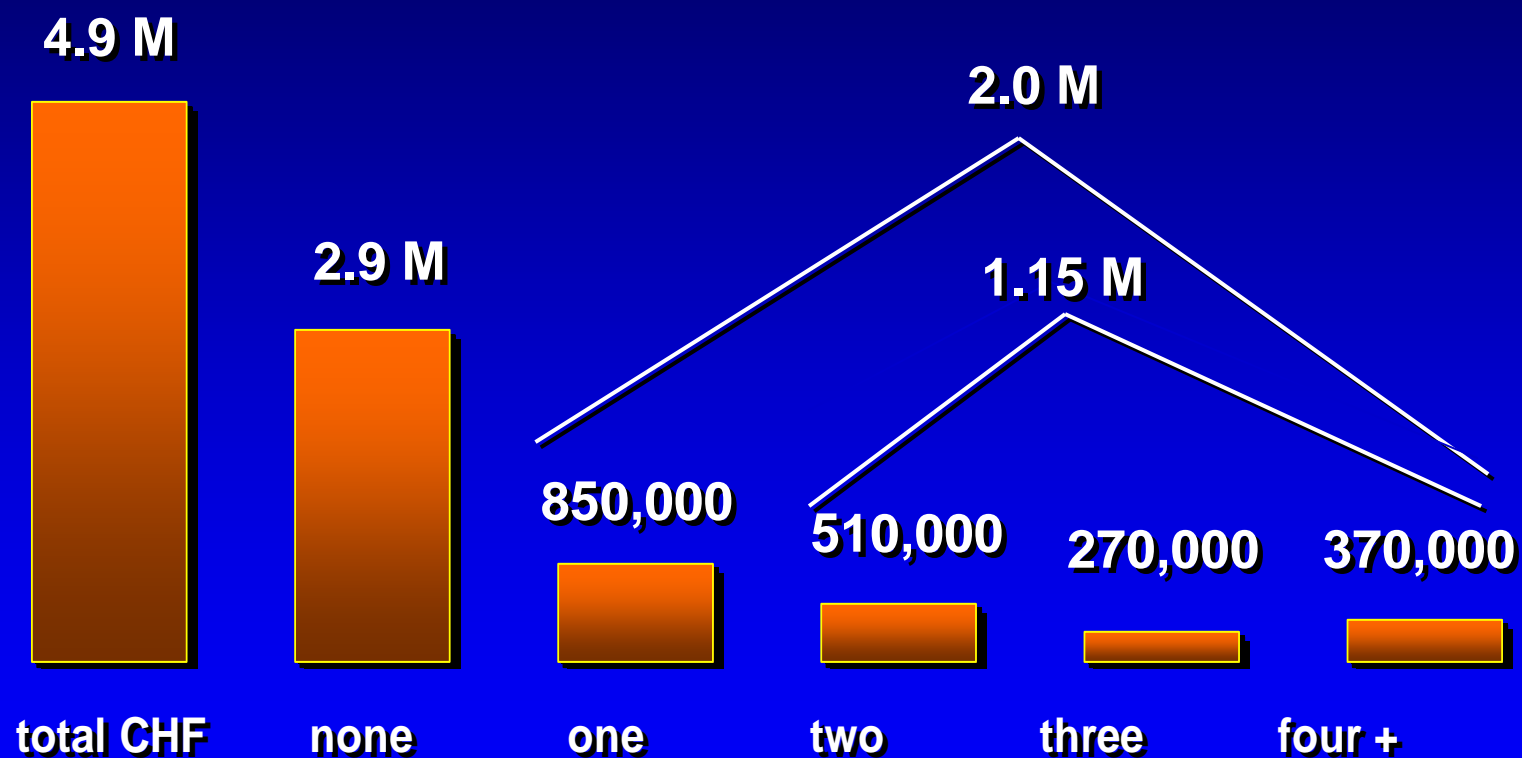
Survival of Stage D Patients

Optimal Medical Therapy



End-Stage Heart Failure

One Year Hospital Admissions



Market Insights. San Francisco: 1998; Cardiology Roundtable Analysis