



Kingsgate

Consolidated Limited

ABN 42 000 837 472

30 September 2009

Via ASX Online (2 pages)

FOR PUBLIC RELEASE

The Manager, Announcements
Company Announcements Office
Australian Securities Exchange

Dear Sir/Madam,

Gold intersected outside planned A Pit at Chatree North

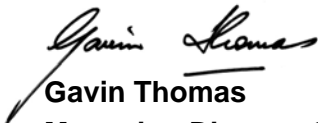
Recent drilling intersected zones of gold mineralisation outside the current planned open pit limits of the northern part of the A Pit at Chatree North.

30 metres at 5.6 grams/tonne gold, including 6 metres at 13.8 grams/tonne gold was returned in drillhole 7152RD on cross-section 20425N, 200m east of the northern most limit of the planned A Pit.

Other nearby positive results, including 17 metres (m) at 3.4 grams/tonnes (g/t), 9m at 1.3g/t and 2.2m at 5.3 g/t were returned from the same cross-section. Another drill section 75 metres to the north, 20500N, returned 10m at 3.8 g/t, including 6m at 5.4 g/t.

The gold mineralisation is interpreted to be a sub-horizontal pipe-like body or structure, capped by a thin silica unit, which has been intersected in sections further north. The understanding of the geological controls on mineralisation are still being developed as part of the ongoing resource development drilling program within Chatree North.

Yours sincerely,

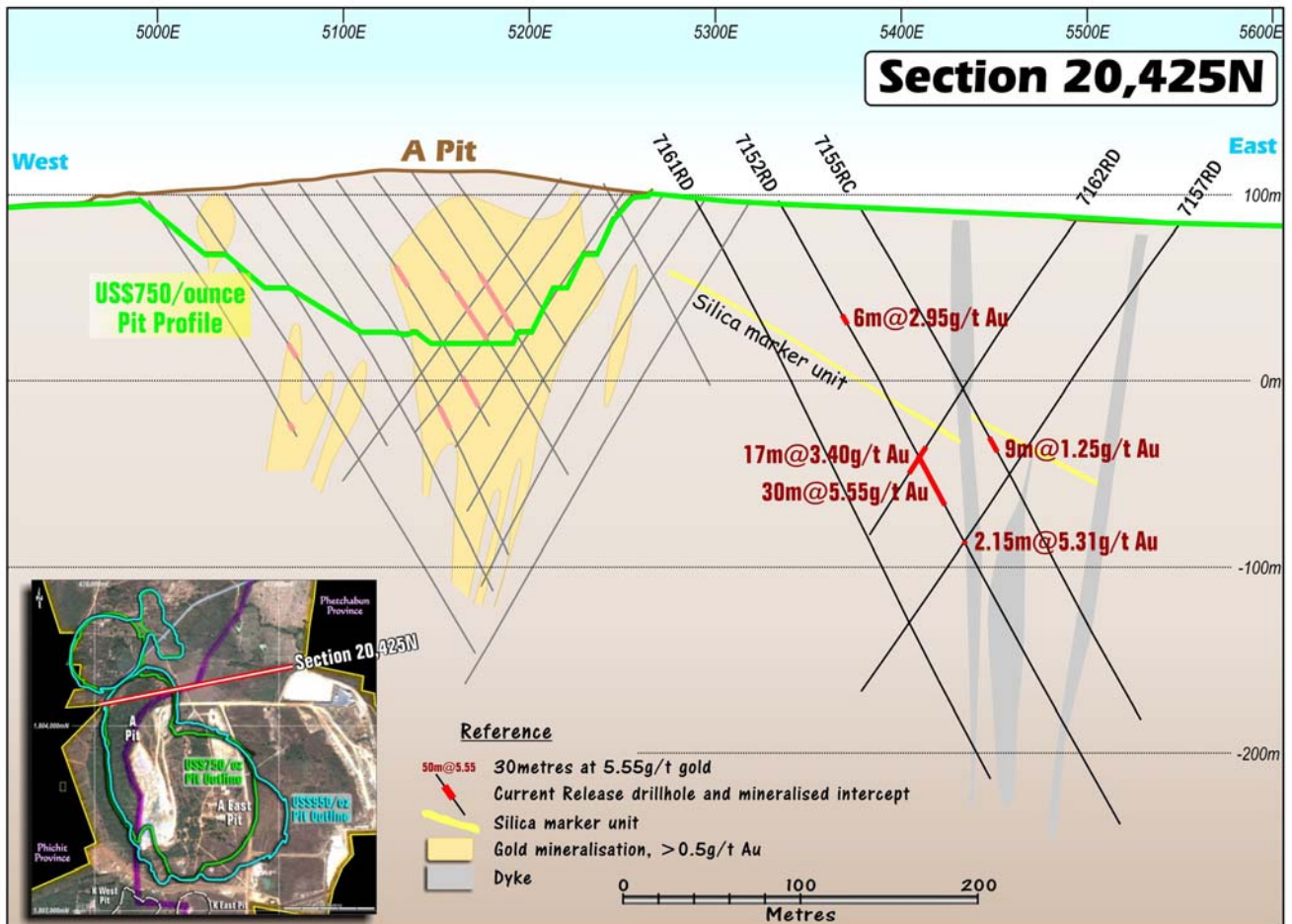


Gavin Thomas
Managing Director & CEO

Information in this report that relates to exploration results, geology, drilling and mineralization is based on information compiled by Ron James and Mike Garman who are employees of the Kingsgate Group and members of The Australasian Institute of Mining and Metallurgy. These people qualify as Competent Persons as defined in the Australasian Code for Reporting of Exploration Results, Mineral Resources and Ore Reserves (the JORC Code, 2004 edition) and possess relevant experience in relation to the mineralization being reported on. All of these Competent Persons have consented to the Public Reporting of these statements concerning exploration results, geology, drilling and mineralization and the inclusion of the material in the form and context in which it appears.

Drill Hole Summary Results- A Pit Sections 20425N - 20550N, Chatree North									
Aug- Sept 2009 (intercepts with Au assays generally > 5 gram.metres.)									
Hole No.	Easting loc_A	Northing loc_A	Azimuth loc_A	Dip (degrees)	Hole Depth (m)	From (m)	To (m)	Interval (m)*	Au (g/t)
2932RCext	5327	20580	100	-55	327.00	289.00	301.00	12.00	1.50
2804RCext	5308	20531	100	-55	363.00	268.00	273.00	5.00	1.02
						293.00	303.00	10.00	3.82
						incl. 294.00	300.00	6.00	5.44
						313.00	320.00	7.00	1.29
2809RDext	5300	20480	100	-55	340.10	185.00	188.00	3.00	4.31
						198.00	203.50	5.50	1.09
7152RD	5335	20425	90	-60	380.80	69.00	75.00	6.00	2.95
						incl. 71.00	72.00	1.00	10.80
						131.00	136.00	5.00	1.01
						147.00	177.00	30.00	5.55
						incl. 147.00	149.00	2.00	16.20
						206.00	208.15	2.15	5.31
7155RC	5378	20424	90	-60	189.00	144.00	153.00	9.00	1.25
7162RD	5495	20425	270	-55	203.60	145.00	162.00	17.00	3.40

*intersection may not be true thickness. RD=Reverse Circulation drillhole (RC) with Diamond core tail



Chatree North A Pit Section 20425N at northern limit of A Pit with recent gold mineralized drill intercepts