



# NTCELL: Advancing breakthrough treatment for Parkinson's disease

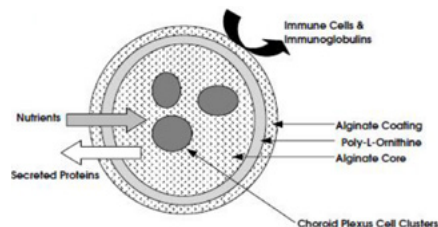
## Parkinson's disease

- Parkinson's disease is estimated to affect more than 10 million people globally, including 100,000 in Australia alone.
- In Australia, Parkinson's disease inflicts a substantial cost to the community, estimated by Deloitte Access Economics at around \$10 billion a year.
- The market for Parkinson's disease treatment is expected to reach US\$11.5 billion by 2029, up from US\$5.7 billion in 2022 and with a CAGR of 12.6%, driven by an ageing population.

## How does LCT's treatment differ to others?

The only current treatments for the management of Parkinson's disease are drugs or medical implants to modulate symptoms and signs of the disease. LCT aims to develop a treatment to prevent progression of Parkinson's, based on our groundbreaking research.

## What is NTCELL?



Porcine (pig) choroid plexus cells produce a range of growth factors known to provide a neuroprotective effect (protecting nerve cells against damage, degeneration or impairment) on dopaminergic neurons in an experimental model of Parkinson's disease.

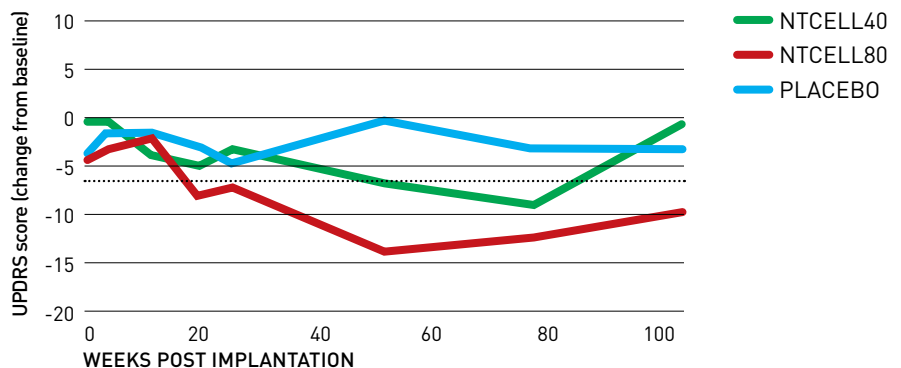
LCT has developed choroid plexus cells from a breed of domesticated designated pathogen-free pigs. These cells are encapsulated in alginate microcapsules which permit the inward passage of nutrients and the outward passage of essential growth factors normally secreted by choroid plexus cells. Importantly this microcapsule also protects the cells from being attacked by the patient's immune system.

For the latest updates on our NTCELL project, please visit our website [www.lctglobal.com](http://www.lctglobal.com), follow us on LCT social media or subscribe to our email list.

## NTCELL clinical trial results

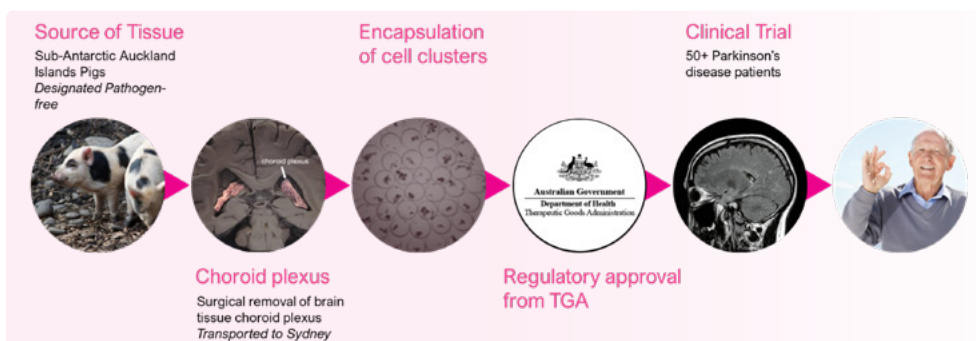
LCT has already conducted two clinical trials of its NTCELL in Parkinson's disease. The second, Phase 11b trial examined NTCELL's effectiveness in treating people with moderate-to-late-stage Parkinson's. The key measurement was UPDRS, a measurement of motor function when patients were tested in their "off state" i.e. when not taking anti-Parkinsonian medications. In patients receiving 80 capsules of NTCELL (NTCELL80 below), a clinically relevant effect was observed (<-6.45 points from baseline).

### Two years after NTCELL implantation safety and dose responsive efficacy was successfully established for NTCELL



## NTCELL – Pathway to development

Based on these successful results LCT is currently progressing a third clinical trial of NTCELL in Parkinson's disease, with the first human trial participants expected to receive treatment in 2024.



LCT is listed on the Australian (ASX: LCT) and US (OTCQB: LVCLY) stock exchanges. The company is incorporated in Australia, with operations in Australia and New Zealand.

**LCT DISCLAIMER:** This document contains general background information about the Company's activities current at the date of 17 May 2022. It is information given in summary form and does not purport to be complete. It is not intended to be relied upon as advice to investors or potential investors and does not take into account the investment objectives, financial situation or needs of any particular investor. This should be considered, with or without professional advice, when deciding if an investment is appropriate.