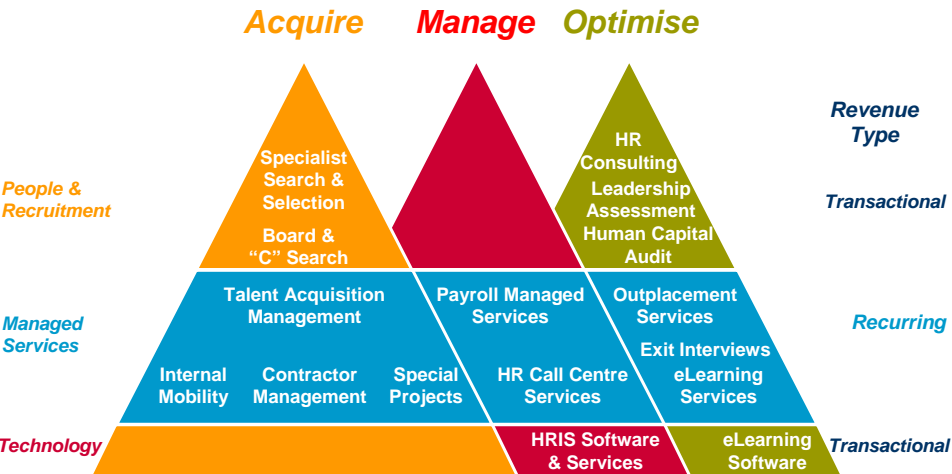


talent² 2006 Annual General Meeting



Talent2's Full Service Offering



2006 Financial Highlights

	FY 2006	FY 2005	Growth
Revenues	\$99.6 m	\$60.3 m	+65%
Gross profit	\$71.8 m	\$43.6 m	+65%
EBITDA	\$10.0 m	\$6.0 m	+68%
Return on Gross Profit	13.9%	13.8%	
Earnings before tax	\$5.16 m*	\$4.19 m	+23%
Reported earnings after tax	\$3.72 m	\$4.91 m**	(24%)
EPS	3.29c	5.13c	(36%)
Maiden Dividend	3.00c	-	

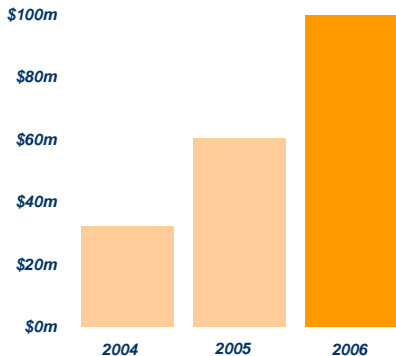
* FY 2006 result includes additional intangible asset amortisation for business acquisitions under AIFRS.

** FY 2005 result includes a positive taxation adjustment to account for historical tax losses and timing differences.

Another Year of Strong Growth

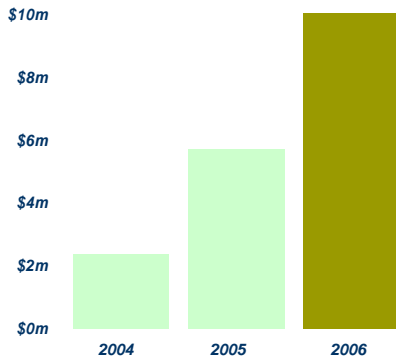
Revenues

65% Growth on Last Year



EBITDA Profit

68% Growth on Last Year



New Clients

MYER



citigroup



The University of Sydney

UNISYS
Imagine it. Done.



NEC



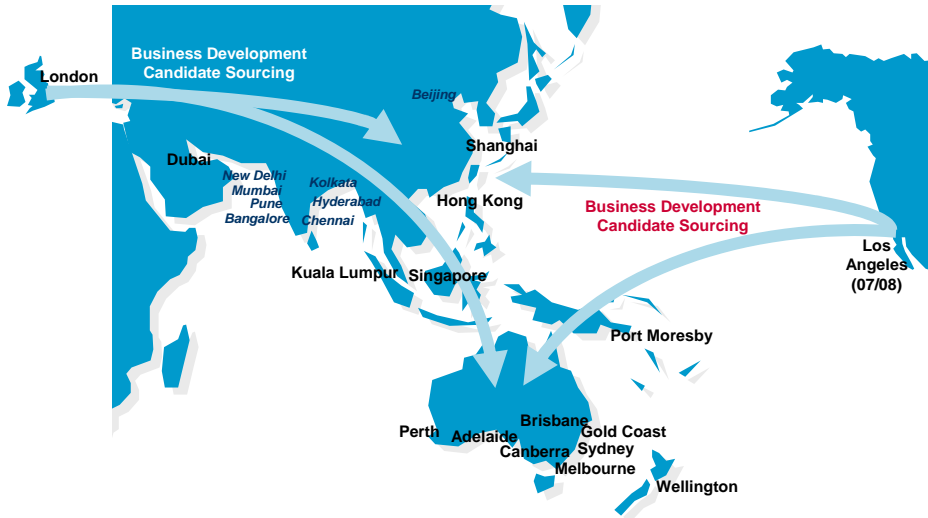
> passion > **innovation**
> affinity

talent²

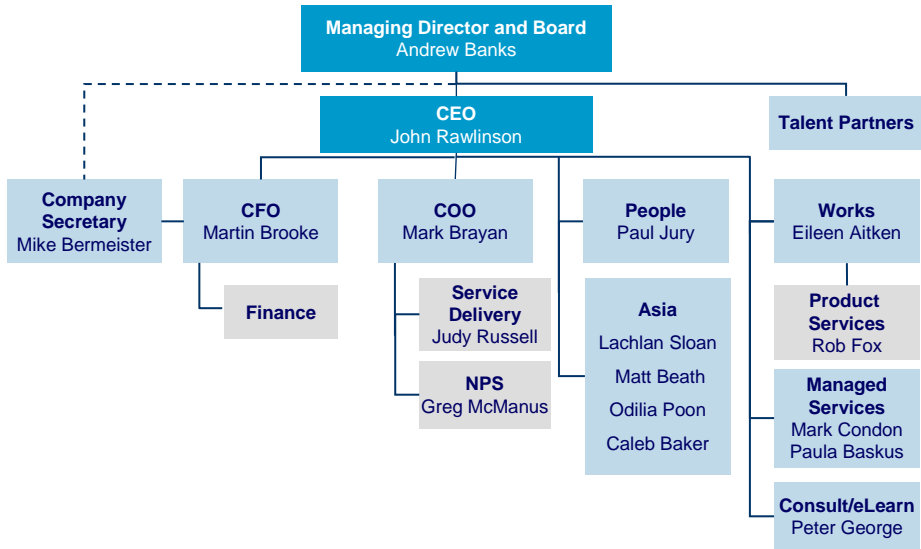
Recruitment Outsourcing Case Studies

	Client A	Client B	Client C	Client D	Client E
Duration	20 months	6 months	15 months	20 months	15 months
Volume of roles (12 months)	269	1500	345 external and 420 internals	120 perm and 94 contract	140
Pre-TAM Solution time-to-fill (approximate)	32 days	50-70 days	40-60 days	28 days	45 days
Average time-to-fill (across all role types)	16 days	35 days (tracking down)	30 days (tracking down)	16 days	8 days
Cost savings achieved	>30%	30%	>35%	34%	33%
% roles placed by on-site team	100%	80%	88%	84%	100%

Expanding the Region



The Talent2 Team



talent² *Leading the Revolution*



“The future of Talent2 is driven by the worldwide HRO mega trends and the needs of our customers. We are growing fast and capitalising our advantage.”

> passion > **innovation**
> affinity

talent²
talent²