

Qinglian Expressway

CREATING EXCELLENT VALUES

Environmental, Social and
Governance Report 2017



Stock Code: 01052



CONTENTS

04 **About Yuexiu Transport**
Company Profile / 04
Corporate Governance / 06

07 **About this report**

08 **Chairman's Message**

10 **Overview of Development in 2017**

12 **Sustainable Development Policies**
Principles of Sustainable Development / 14
Structure of Sustainable Development / 14
Stakeholder Identification and Engagement / 16
Items and Lists of Materiality Issues / 17
Anti-Corruption / 19

20 **Environmental Protection**
Green Project Management / 22
Green resources management / 25
Green ecology management / 27

28 **Traffic Safety Responsibility**
Ensure traffic safety / 30
Create Convenient and Quality Services / 33

36 **Supply Chain Management**

40 **Employment**
Diversified employee team / 42
Comprehensive protection of rights and interests / 43
Fair and sound vocational development / 45
Vivid lifestyle of employees / 50

52 **Community Construction**
Targeted Poverty Alleviation / 54
Charity / 54
Community Inclusion / 55

56 **List of policies for sustainable development**

59 **Data Table**

64 **Content Index of the Environmental, Social and Governance Reporting Guide**

68 **Feedback**

ABOUT YUEXIU TRANSPORT

Company Profile

Established in 1996, Yuexiu Transport Infrastructure Limited engages in investment, operation and management of toll expressways and bridges in Mainland China. Yuexiu Transport was listed in Hong Kong in 1997. In recent years, with professional investment and operation capability and excellent service management, Yuexiu Transport won Chinese management science prize and investment grade credit ratings granted by Moody's, S&P and Fitch. Guangzhou Yue Xiu Holdings Limited, the controlling shareholder of Yuexiu Transport, is under the supervision of Guangzhou State-owned Assets Supervision and Administration Commission.

廣州越秀集團有限公司
Guangzhou Yue Xiu Holdings Limited

100%



Yuexiu Enterprises (Holdings) Limited

Public

59.60%

40.40%



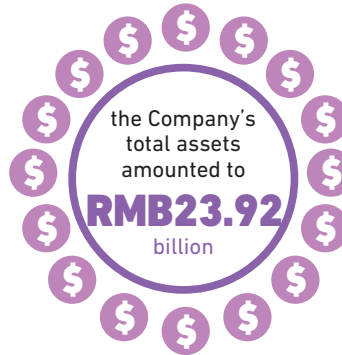
Yuexiu Transport Infrastructure Limited



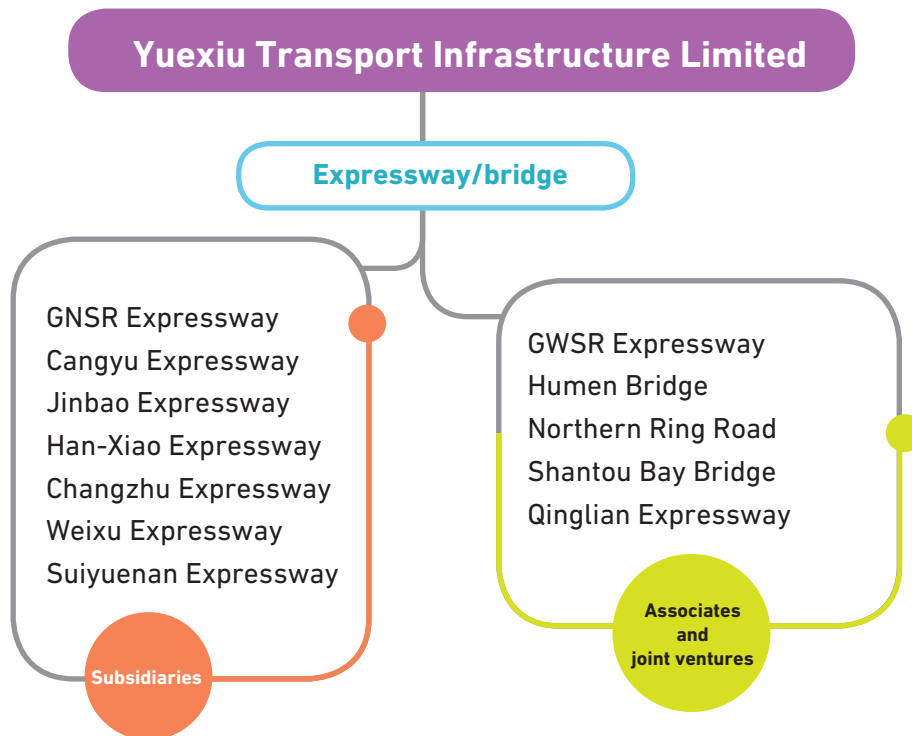
Expressway / Bridge



As at the end of 2017, the Company's total assets amounted to RMB23.92 billion, and annual operational income amounted to RMB2.70 billion, with approximately 1,500 employees; besides, the Company has invested in 12 highway and bridge projects in six provinces and cities nationwide. The attribute toll length of the Company's subsidiaries was approximately 281.1 km (total toll length was approximately 337.1 km). The attributable toll length of the Company's associated companies and joint ventures was approximately 77.3 km, and the total attributable toll length of expressways and bridges was approximately 358.4 km.



Yuexiu Transport and its subsidiaries, associates and joint ventures



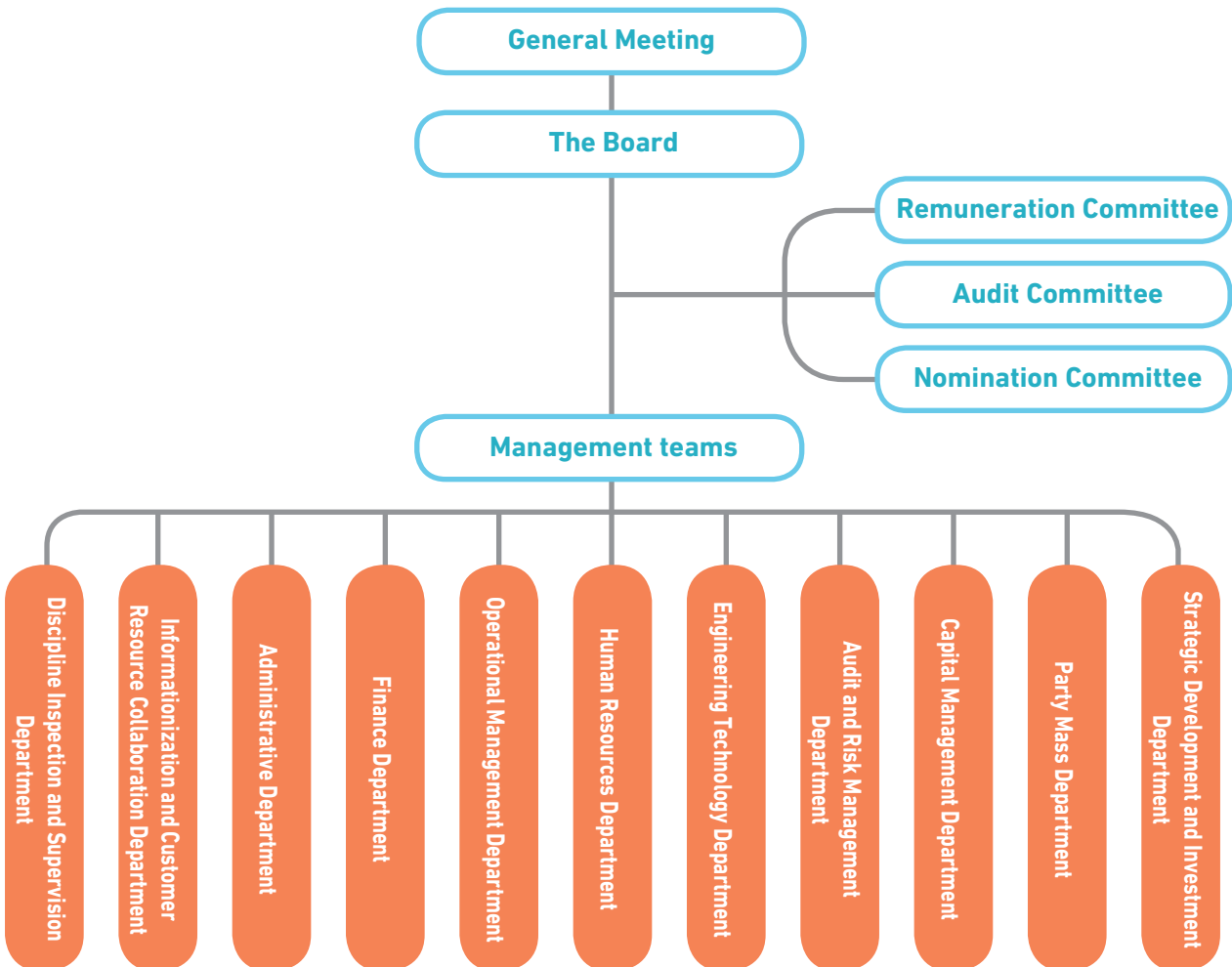
ABOUT YUEXIU TRANSPORT

Corporate Governance

Yuexiu Transport has been devoted to improving the corporate governance and modern management system, constantly optimizing risk management system and seeking sustainable, healthy and stable development and protecting rights of stakeholders to further improve its image in the industry and capital market and maximally gain recognition and trust from investors, creditors, partners and all sectors of society in respect of corporate development.

Yuexiu Transport has set up a corporate governance structure consisting of general meeting, the Board, committees under the Board, management teams and functional departments, formulated multi-layered governance rules based on the memorandum of association and bye-laws to specify their duties, authorities and codes of conduct, and constantly examined and improved the aforesaid structure and rules in practice to make corporate operation more transparent, independent and efficient. The corporate governance structure is illustrated below:

Management structure of Yuexiu Transport



ABOUT THIS REPORT

Overview

This is the second Environmental, Social and Governance (ESG) Report of Yuexiu Transport Infrastructure Limited. We disclose information related to the Group's environmental, social and governance performance on an objective and transparent basis. We hope that this report could show our efforts on sustainable development by enhancing communication and trust, and let us work hand in hand towards sustainability.

Basis of Preparation

This report is prepared primarily with reference to the amended version of Environmental, Social and Governance Reporting Guide promulgated in December 2016 by the Stock Exchange of Hong Kong Limited. The preparation includes identifying and ranking important stakeholders and major issues relating to ESG, deciding on the coverage of ESG report, collecting relevant materials and statistics, compiling data based on information, and checking data in the report.

Scope and Boundary of this Report

This report is presented annually for the year 1 January 2017 to 31 December 2017, with part of the data in or before 2016 to enhance comparability. This report adopted the same definitions as in the 2017 Annual Report of the Company, and should be read together with the said annual report.

Title Description

To facilitate presentation, "Yuexiu Transport", "the Company" and "we" herein all refer to "Yuexiu Transport Infrastructure Limited" (1052.HK).

Data Sources and Reliability Statements

Information and cases disclosed herein come from official documents, statistical reports or public information of the Company. We undertake to be responsible for the truthfulness, accuracy and completeness of this report. This report was prepared based on the reporting principles of Materiality, Quantitative, Balance and Consistency as specified in the "Environmental, Social and Governance Reporting Guide".

Obtaining and Responding to this Report

This report is prepared in Chinese and English. In case of any discrepancy between the two versions, the Chinese version shall prevail. The electronic version of this report can be downloaded from the website of Yuexiu Transport Infrastructure Limited: <http://www.yuexiustransportinfrastructure.com/>. If you have any doubt or comment on this report, please call or email us through the following channels:

Contact methods for Report Related enquiries:

Contact Department: Capital Management Department

Address: 17A/F., Yue Xiu Building, 160 Lockhart Road, Wanchai, Hong Kong

Tel: (852) 28652205

Fax: (852) 28652126

E-mail: contact@gzitransport.com.hk

CHAIRMAN'S MESSAGE



Chairman: Zhu Chunxiu



Deputy Chairman and General
Manager: He Baiqing

In 2017, Yuexiu Transport continued to develop its own highway business in a pragmatic and steady manner, creating greater value for various stakeholders. In 2017, the projects of Yuexiu Transport achieved positive business results. Five projects of the Company, including the GNSR Expressway, Han-Xiao Expressway, Weixu Expressway, Suiyuan Expressway and GWSR Expressway have achieved double-digit year-on-year growth in the average daily toll traffic volume and toll revenue recorded.

Road responsibility

Yuexiu Transport is a listed company, but at the same time, the social nature of our operating business determines that we must take up our social responsibility to build a smooth national highway network and contribute to the development of highway logistics. In 2017, the State Council promulgated the "Opinions of the General Office of the State Council on Further Reduction in Logistics Costs and Increase Efficiency to Promote the Development of the Real Economy" (《國務院辦公廳關於進一步推進物流降本增效促進實體經濟發展的意見》). The Opinions stated that the Central Government has made a real commitment to reduce the costs of highway logistics and to lessen the burden on logistics companies. As an enterprise that mainly invests in and operates expressway projects, Yuexiu Transport will implement the relevant principles with practical measures to ensure the smooth traffic flow, improve the operating efficiency of highway management, and strive to help improve the comprehensive service capabilities of highway logistics. At the same time, Yuexiu Transport will continue its endeavour to ensure road safety, including to secure clear and accurate road signs, and the brightness of road lighting at night, and assist local traffic police in handling accidents quickly to ensure that drivers and passengers can receive assistance as soon as possible.

Environmental protection

The operation of the expressway has the characteristics of wide coverage and direct contact with the natural environment. Therefore, during the operation of Yuexiu Transport, it is necessary to fully identify its own environmental impact factors and take effective measures to manage the environment influence during the operation of the highways, as well as protect the natural environment areas along the highways. In 2017, Yuexiu Transport upgraded its own environmental management system to include all highway energy consumption and waste management in the management system. Through regular data monitoring, it laid the foundation for subsequent energy conservation and consumption reduction measures. At the same time, Yuexiu Transport also strengthened the handling of accidental transport of toxic and hazardous dangerous goods on roads, updated various chemical treatment measures, used chemical neutralization and logistics and other measures to minimize the environmental impact of dangerous goods dumping accidents.

Future vision

Yuexiu Transport believes that with the development of the country, the development prospect of the expressway business will grow significantly, at the same time, we must also continue to improve our own road management level with the pace of the times and create social value through excellent road operations. In accordance with the location characteristics of different expressways, Yuexiu Transport will be formulating different road benefit enhancement plans to improve the efficiency of road operations and optimise the economic benefits of the listed company. The core projects of Yuexiu Transport are mainly in the Pearl River Delta, especially within the area delineated by the Guangdong-Hong Kong-Macao Greater Bay Area. With the further implementation of the Guangdong-Hong Kong-Macao Greater Bay Area policies, the advantages of the urban location in the Greater Bay Area will be further enhanced. It can be expected that the prospect for the core projects of Yuexiu Transport is promising. At the same time, the provision of a smooth traffic experience for the major traffic arteries in the Guangdong-Hong Kong-Macao Greater Bay Area is also a historical task for Yuexiu Transport. We must continue to improve our management level and provide excellent value to the country, and to the drivers and passengers who travel on the expressways.

OVERVIEW OF DEVELOPMENT IN 2017

Important honours

- Economic Digest: Hong Kong Outstanding Enterprise 2017
- Quamnet Outstanding Enterprise Awards 2017 - Outstanding Investment and Development of Infrastructure
- Bloomberg Businessweek/Chinese Edition: Listed Enterprises of the Year 2017

Business development

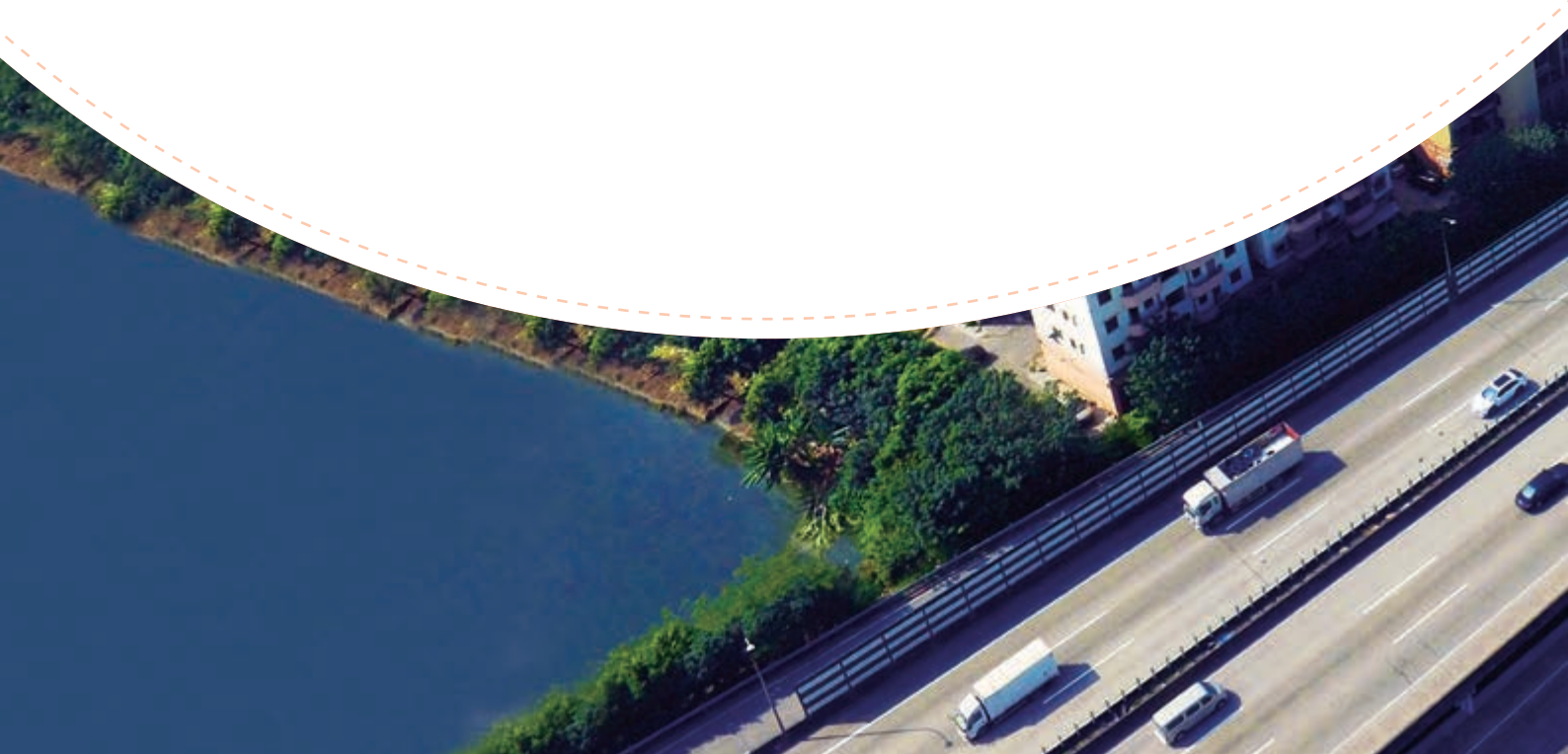
- The Company's operating income in 2017 was RMB2.7 billion, an increase of 7.3% year-on-year, of which, the toll revenue increased by 7.6% year-on-year to RMB2.7 billion, hitting a record high.
- The performance of core holding projects, such as Guangzhou Northern Second Ring Expressway, Hubei Suiyuanan Expressway, Hubei Hanxiao Expressway, and Henan Weixu Expressway exceeded the expectations, and both toll revenue and profit contribution recorded high double-digit growth.

Environment

In the current year, the Company included all its own controlled expressways into the scope of environmental data disclosure to comprehensively demonstrate environmental performance.

Community

During the year, Yuexiu Transport has invested RMB3.52 million in targeted poverty alleviation.







SUSTAINABLE DEVELOPMENT STRATEGIES





In 2017, Yuexiu Transport continued to consolidate its own sustainable development strategy based on the original foundation, starting from the principle of sustainable development, the Company improved its sustainable development framework and responded to the needs of various stakeholders.



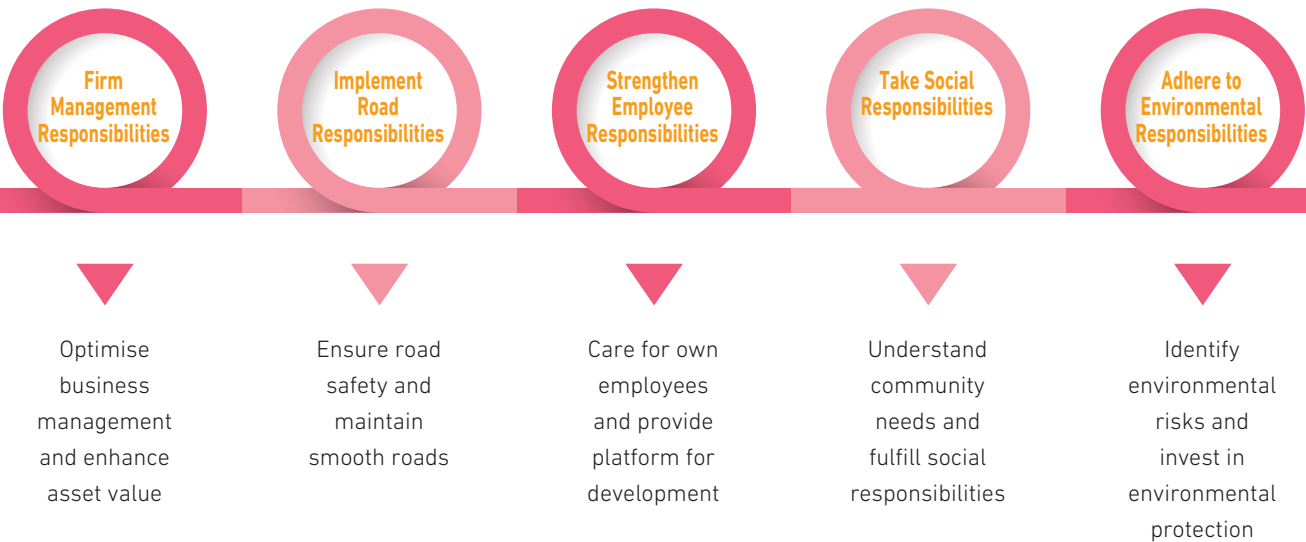
5
major aspects
of sustainability



SUSTAINABLE DEVELOPMENT POLICIES

Principles of Sustainable Development

In line with its own business nature, Yuexiu Transport has formulated the principles of sustainable development in the five major aspects, such as business management, road responsibilities, employee responsibilities, social responsibilities, and environmental responsibilities, with these as the direction for sustainable development, while developing its own business, it has reached a multi-win situation with various stakeholders.



Structure of Sustainable Development

In 2017, Yuexiu Transport continued to consolidate its own sustainable development and governance structure, based on the ESG framework established at the headquarters in 2016, the Company conducted in-depth research on the status quo of environmental management of local companies, conducted comprehensive ESG training for relevant staff, identified issues that needed attention in the routine management of roads, determined the responsibilities of management personnel, and continuously monitored and reported on the environmental status of each road.



Members

He Baiqing, General Manager of the Company, served as team leader, including Deputy General Managers Pan Yongqiang and Zhang Siyuan.

Daily Duties

- Formulate the Company's overall objectives and strategies for sustainable development
- Deploy company resources to support sustainable development

Members

Led by Capital Management Department, heads of various departments are responsible for related work, with designated contact persons for communication.

Daily Duties

- Conduct research on sustainable development management policies applicable to Yuexiu Transport
- Evaluate and report on the current status of sustainable development
- Plan medium and short-term sustainable development work programs
- Supervise the progress of relevant work



Members

Counterpart staff of headquarter and subordinate project companies responsible for environmental and social information.

Daily Duties

- Carry out daily management and statistics of the corresponding environmental and social indicators of headquarter and local expressways
- Periodically report on corresponding indicators
- Propose improvement recommendations for daily management



SUSTAINABLE DEVELOPMENT POLICIES

Stakeholder Identification and Engagement

- **Drivers/Passengers**

Drivers and passengers driving/traveling on expressways managed by Yuexiu Transport

- The drivers and passengers are the direct users of the expressways managed by Yuexiu Transport, and the Company is responsible for ensuring the safe and smooth traffic of roads and providing them with a good travel experience.
- Their main concerns: Road safety, smooth traffic, peer expenses, road facilities, emergency rescue access
- Our daily communication: Toll station staff communication, opinion collection, satisfaction survey, complaint hotline

- **Traffic Management Authority/Government**

The traffic management authority and other government departments of the city where the Yuexiu Transport Headquarters/the expressway are located

- The traffic management authority is the supervising department of the expressway; as the main handling department of traffic accidents, it also ensures the road safety together with Yuexiu Transport.
- Their main concerns: Road safety, smooth traffic, road facilities, emergency access, paying taxes according to law, and generating positive social benefits
- Our daily communication: Regular visits, policy communication, and assistance in handling traffic accidents

- **Employees**

There were 1,482 employees hired directly by Yuexiu Transport

- Excellent staff supported the continuous development of Yuexiu Transport
- Their main concerns: Remuneration, career development, employee benefits, promotion policies, training system, corporate reputation, job intensity, internal communication channels
- Our daily communication: Direct communication, employee mailbox/hotline, training programs

- **Shareholders and Investors**

Yuexiu Transport's existing shareholders, and potential investors

- The institutional investors of Yuexiu Transport provided the economic foundation for our development, Yuexiu Transport therefore was obliged to create satisfying expectations and sustainable economic returns for shareholders
- Their concerns: Share prices, dividends, financial conditions, business prospects, future development plans, governance, management selection and recruitment
- Our daily communication: Shareholders' Meeting, financial information disclosure, investor hotline/mailbox, investor relations roadshow

- **Suppliers**

Suppliers providing materials and services required for routine operations for roads managed by Yuexiu Transport

- The quality materials and reliable services provided by suppliers for Yuexiu Transport are the key to ensuring the road maintenance level of Yuexiu Transport
- Their concerns: Procurement policies, supplier management system, fair trade, on-time delivery, timely payment, communication channels, and maintaining good partnerships
- Our daily communication: Supplier review, regular visits

- **Local Communities**

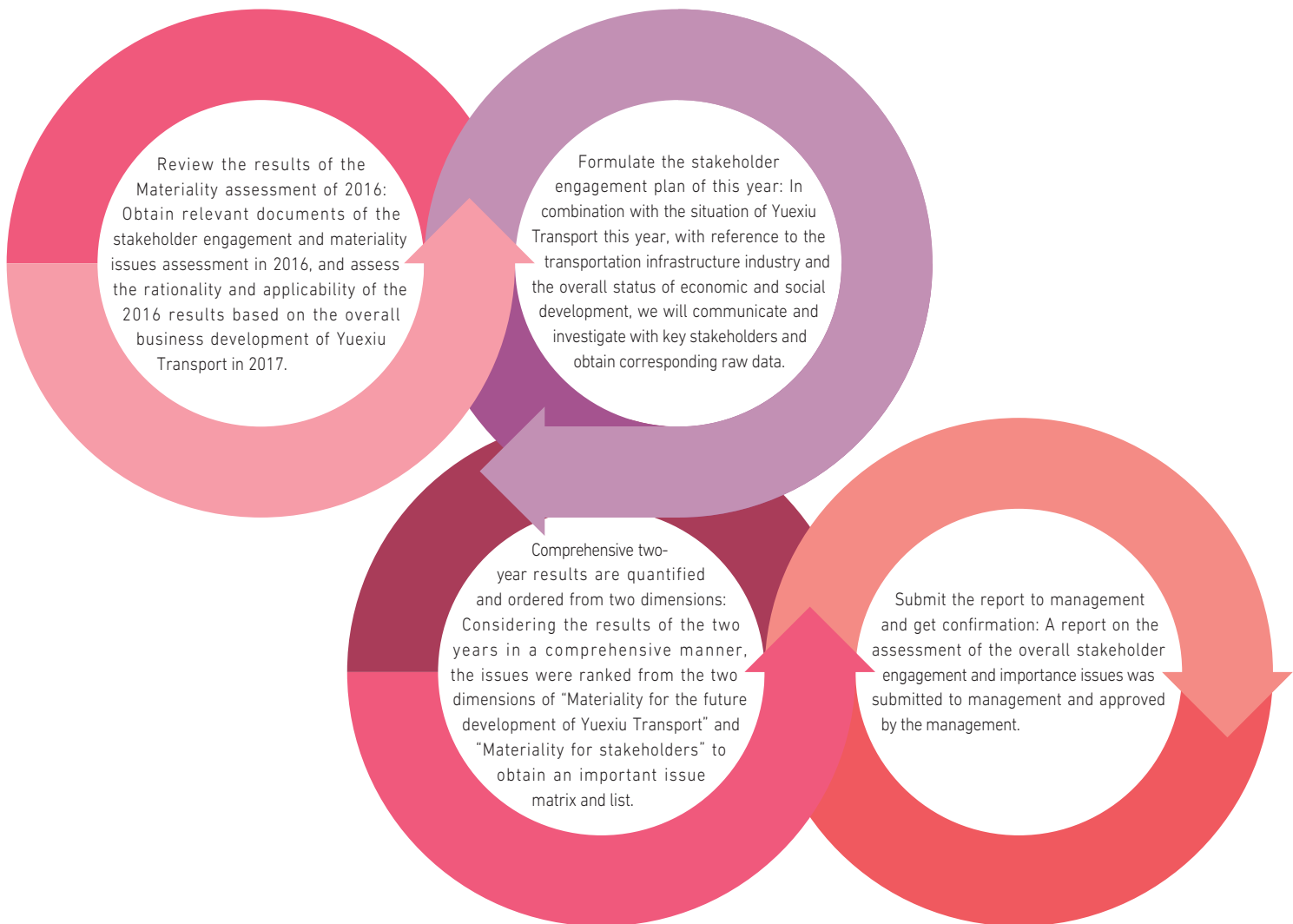
Communities in the districts of where Yuexiu Transport Headquarters/roads are located

- The roads operated by Yuexiu Transport have indirect environmental and social impacts on local communities
- Their concerns: The environmental impact by roads, corporate operations ethics
- Our daily communication: Public welfare activities, complaint hotline

Items and Lists of Materiality Issues

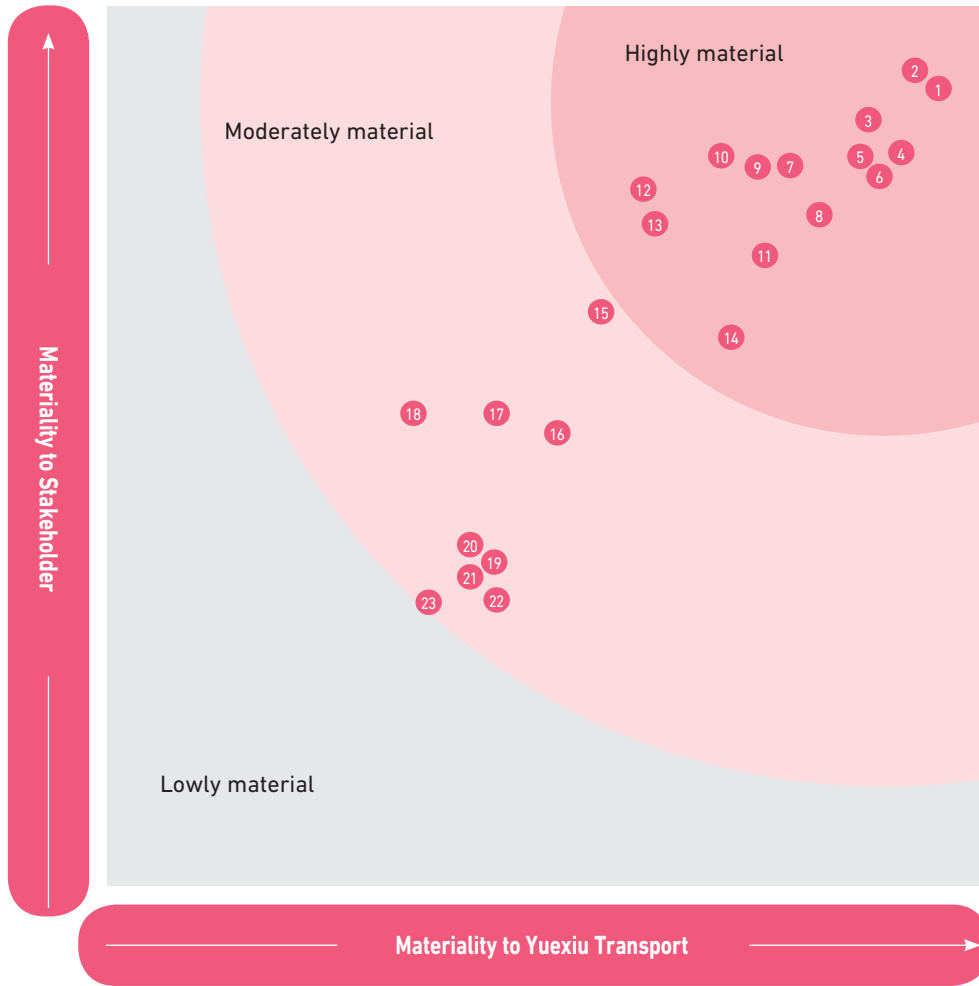
Yuexiu Transport hired an external professional consultant to review and evaluate the sustainable development issues of the Company this year. From the perspective of stakeholders, the consultant generalized and summarized the sustainable development issues that were of importance to the Company as the basis for the preparation of this report.

Process of Materiality Assessment



SUSTAINABLE DEVELOPMENT POLICIES

Yuexiu Transport Infrastructure Limited Materiality Matrix



- | | | | |
|----|--|----|--|
| 1 | Road safety management | 13 | Road noise management |
| 2 | Road quality management | 14 | Customer satisfaction |
| 3 | Employment relationship management | 15 | Environmental impact management |
| 4 | Anti-corruption | 16 | Resource investment in community development |
| 5 | Employee training | 17 | Intellectual property right |
| 6 | Prohibition of use of child labor and forced labor | 18 | Community Investment |
| 7 | Occupational safety and health | 19 | Use of water resources |
| 8 | Suppliers' social responsibility evaluation | 20 | Use of materials |
| 9 | Employee retention management | 21 | Waste management |
| 10 | Road greening management | 22 | Emission management |
| 11 | Customer privacy protection | 23 | Greenhouse gas management |
| 12 | Energy use | | |

Anti-Corruption

Yuexiu Transport has complied with the provisions of the Corporate Governance Code of the Rules Governing the Listing of Securities on the Stock Exchange of Hong Kong Limited¹, and attached importance to transparency, independence, accountability, responsibility and fairness, also implemented the CPC Central Committee's spirit on party building of state-owned enterprises. The Company promoted overall anti-corruption education work centering on the Discipline Inspection and Supervision Department, and formulated the "Implementation Measures for the Implementation of Supervision Responsibility for Party Conduct and Clean Government Construction", "Anti-corruption Archives", "Guidelines for the Anti-corruption Practice of Expatriate Management Personnel" and "Prevention and Control Guidelines for Anti-corruption in the Procurement of Fixed Assets", implementing the construction of party conduct and clean government construction, proceeding from the decision-making system, professional manager management, major project auditing and efficiency monitoring, taking the institutionalized decision-making system and the anti-corruption education covering the entire company as the main measures to ensure the effective implementation of anti-corruption work.

During the reporting year, Yuexiu Transport held a number of anti-corruption education and mobilization activities, such as the mobilization meeting for the governance of lower level anti-corruption campaigns, the mobilization meeting for disciplinary education, and so on; with each event involving more than 200 people, those events effectively improved the anti-corruption awareness and disciplinary awareness of Yuexiu Transport's staff.

The Company's strict anti-corruption achieved good results, There was no corruption lawsuit against the Company or employees during the reporting period.



▲ Disciplinary Education Mobilization Month Event

^① Save for those in respect of the appointment of non-executive directors for a specific term under Code Provision A.4.1 and the attendance at general meetings by the independent non-executive directors of the Company under Code Provision A.6.7, details of which can be found in the Corporate Governance Report in the Annual Report 2017.



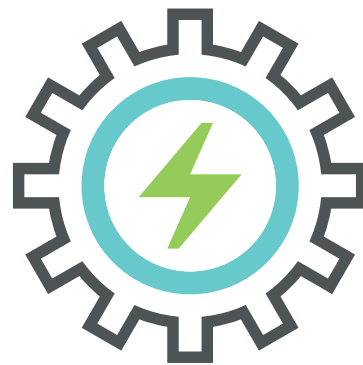
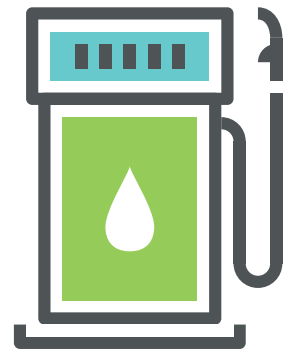
ENVIRONMENTAL PROTECTION





Greenhouse gas emission resulting from combustion of fossil fuel

1,338
Ton
of CO₂e



Greenhouse gas emission resulting from electricity use

7,203
Ton of CO₂e

ENVIRONMENTAL PROTECTION



Green Project Management

Emission management policies

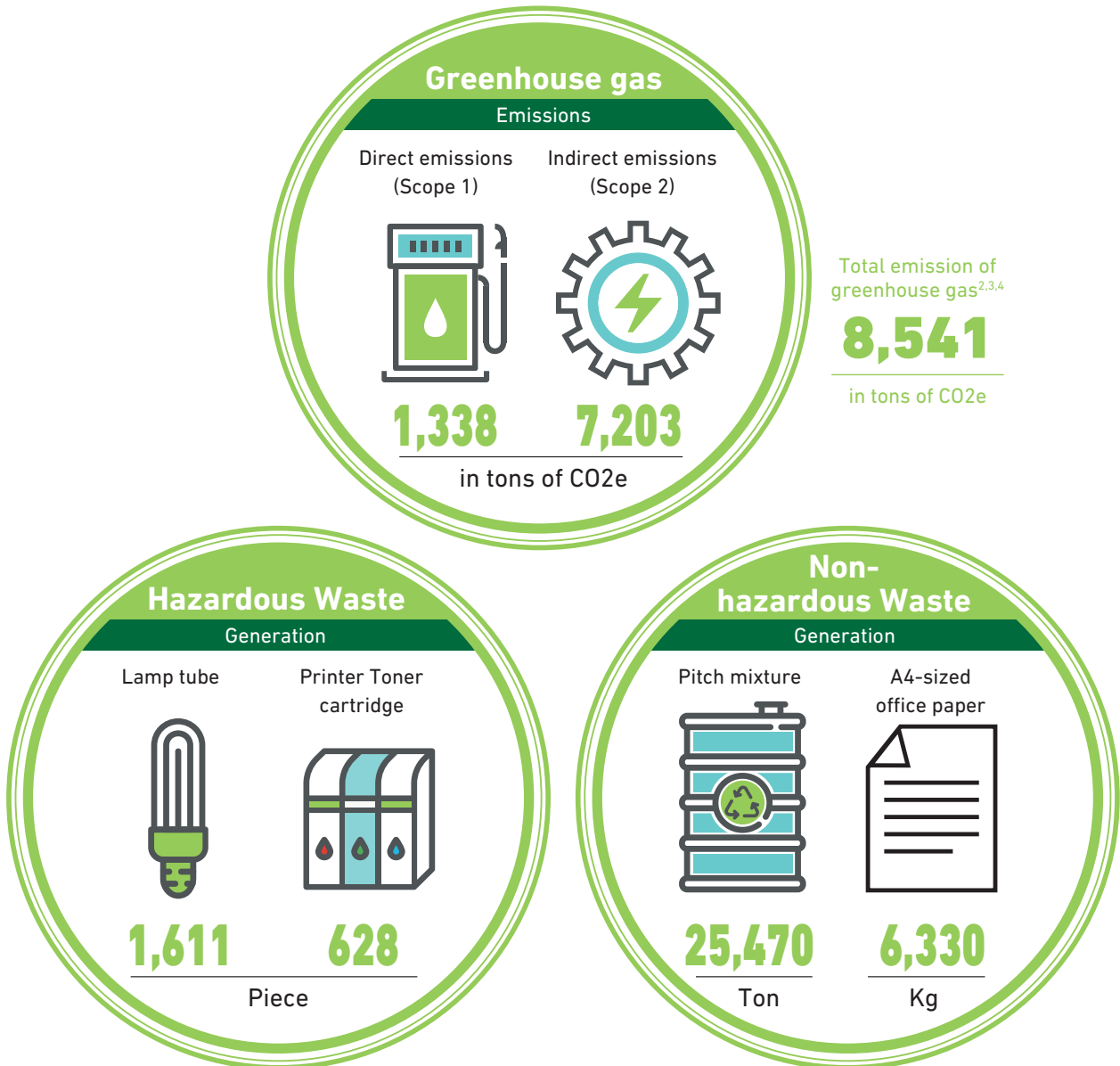
Yuexiu Transport strictly abided by the "Law of the People's Republic of China on the Prevention and Control of Atmospheric Pollution", "Law of the People's Republic of China on the Prevention and Control of Water Pollution", "Law of the People's Republic of China on the Prevention and Control of Environmental Pollution by Solid Waste", "Law of the People's Republic of China on Environmental Impact Assessment" and "Regulations on the Administration of Construction Project Environmental Protection (State Council Decree No. 253)", and complied with relevant local laws and regulations and industry regulations to reduce the impact of daily operations on the environment. We actively promoted new technologies, new processes, new materials, and new products, while saving costs and improving road performance, we also saved materials, protected the environment, reduced pollution, and contributed to green travel.

In 2017, Yuexiu Transport included all expressways under its subordinates in the statistical data of all types of environmental data. Compared to 2016, only individual categories were included in the environmental statistics, this year's data can better reflect the environmental impact of Yuexiu Transport's own business.

Types of emissions

The emissions generated by the Company's operating activities in 2017 and corresponding data were as follows:

Statistics of greenhouse gas and waste of Yuexiu Transport in 2017



² The accounting method and relevant parameters of the GHG emissions data are selected from the National Development and Reform Commission's "Guidelines of the Greenhouse Gas Emissions Accounting and Reporting for Other Industrial Enterprises (for Trial Implementation)", and "2015 Baseline Emission Factors for Regional Power Grids in China".

³ According to the ISO 14064 International Standard for GHG Emissions Inventories and Verification, the scope of GHG emissions refers to the direct GHG emissions and refers to emissions directly from the sources owned and controlled by the organization, such as emissions from vehicles owned by itself.

⁴ According to the ISO 14064 International Standard for GHG Emissions Inventories and Verification, the scope of GHG emissions also refers to indirect sources of energy, such as indirect GHG emissions caused by purchased electricity.

ENVIRONMENTAL PROTECTION

Treatment measures and results

From the waste generated from road surface repairs, to the waste paper produced in daily operations, Yuexiu Transport adopted appropriate methods for recycling to reduce the impact of waste emissions on the environment.

Waste Recycling Methods

Pitch



For the pitch and other wastes generated during the daily repair of the road surface, Yuexiu Transport chose qualified construction units to be responsible for cleaning up and supervised the clean-up work. Yuexiu Transport will reuse the waste pitch and other wastes generated during the repair of road surface, including filling the unloading area of the Company's over-limit overloading inspection site and the pits of surrounding town roads to increase its flatness and improve the surrounding river courses. The reuse of materials not only reduced the potential environmental impact by the stacking of waste materials, but also saved the cost of repairing roads for the surrounding residents.

Office Waste Paper



The waste paper produced during office work was shredded by assigned persons if business secrets of the Company were contained; ordinary waste paper will be sold to waste collection stations.

Waste Toner Cartridges and Other Printing Supplies



The Company cooperated with specialized office supplies suppliers to recycle waste toner cartridges and other end-of-life components generated by daily operations to avoid adverse effects of chemical substances on the environment.

To reduce waste generated during maintenance of road and bridge surfaces, the subordinate project companies of Yuexiu Transport use the heating system in the operation site to evenly heat the bituminous pavement to be renovated to the required temperature, then use the remixing system to plow up the heated bituminous pavement and add new bituminous mixtures or regenerates, which are blended with the plowed old materials for re-pavement and compaction. This procedure should be completed continuously by one cycle so as to renovate the bituminous pavement. Thanks to the heat regeneration technology, waste pitch generated during maintenance of road and bridge surfaces is greatly reduced.

Repair works of expressways often require mixing and heating of materials at the site, which may inevitably lead to a certain degree of odor and dust during the process. In order to minimize the impact of this process on neighboring residents, Yuexiu Transport will require the companies to avoid the concentration of residents, rivers and other environmentally sensitive points along the expressway when determining the location of the concrete mixing points and pitch mixing points; and in order to reduce the generation of dust at the mixing point, perfect dust removal equipment is required at the site, and some of the fine material storage points that easily generate dust need to be shielded; in addition, as far as possible during the mixing, the location should be set in the downwind position to minimize the impact of dust on the surrounding environment.

Green resources management

Yuexiu Transport is striving to build a resource-saving enterprise by adopting new technologies and new systems. In strict compliance with laws and regulations, such as the Energy Conservation Law of the People's Republic of China and Cleaner Production Promotion Law of the People's Republic of China, we proactively lead the subordinate project companies to practice green resources management and encourage employees to start from details for developing the habit of resource saving.

In the office at Headquarters, Yuexiu Transport adopted electronic office systems to reduce the resources consumed during office work. The company actively implemented the office automation system and strove to realize "paperless office". At the same time, when printing documents, the employees were encouraged to use double-sided printing to save paper. In addition, we have also upgraded the telephone and video conferencing system, which not only reduced the travel burden on employees, but also reduced greenhouse gases and atmospheric pollutants generated by fuel combustion, and reduced the impact of company operations on the environment.

To build a resource-saving enterprise, monitoring, statistics, and feedback on resource use are essential. Yuexiu Transport has established a complete inspection system to maintain detailed records and archives of the Company's resource usage. The types and amount of resources consumed by the Company in 2017 were shown below.

Use of resources of Yuexiu Transport in 2017

Type of consumed resources	Resource name	Consumption
 Fossil fuels	Gasoline	302,212 Litre
	Diesel	128,100 Litre
	LPG	85 Ton
 Electricity	Electricity purchased	11,157,990 kWh
 Road maintenance materials	Pitch mixture	48,456 Ton
	Cement concrete(new)	13,280 Ton
	Building stones	1,183 Ton
	Snowmelt agent	1,161 Ton
 Water resources	Water consumption in total ⁴	195,026 m ³
 Paper	Toll paper	14 Ton

⁴ Rest areas and green irrigation water of the expressway were not included in this disclosure. Such water usage was managed by our commissioned operators, and Yuexiu Transport closely monitored their water resources use practices and management practices.

ENVIRONMENTAL PROTECTION

Resource-saving measures and results

Resource-saving measures and results of Yuexiu Transport

Power conservation



The Company conducted energy-saving reconstruction for tunnel lamps for its subsidiary GNSR Expressway, replaced the high-pressure sodium lamps along the whole GNSR Expressway with LED lamps, installed a remote-control system and set the time for turning on and off the lamps according to time of sunrise and sunset. After energy-saving reconstruction, the electricity saving rate reached 68%.

Water conservation



Yuexiu Transport mainly used water wagons for irrigation in road greening and maintenance. To reduce water consumption in road greening and maintenance, we dynamically and regularly adjusted the irrigation frequency according to different seasons and types of plants. In respect of water resources, we mainly used rainwater stored and water used for irrigation of local ditches and ponds. Such water was also used for fish farming and road maintenance. We did not use running water in the whole greening and maintenance course, but reused the water resources to minimize water consumption in greening and maintenance.

Paper conservation



Yuexiu Transport adopts paperless charging for its toll stations. Drivers get a composite card that can be repeatedly used at the entrance, determine their driving routes via the RFID equipment set on the road, read the information in the composite card via the card reader at the exit. Then, the computer automatically calculates the payable charges according to the information in the card. No paper (excluding legal invoices) is used during the whole course.

Case

In order to reduce the use of materials and improve the service life of the road, Tianjin Jinbao Expressway carried out micro-surface preventive maintenance construction projects. Jinbao Expressway combined road collection with the annual preventive maintenance of planned roads. In 2017, the roads on which micro-surface preventive maintenance was carried out was totally 83,239 m² in area, which reduced 81,823 m² of milling sections and reduced milling waste by 3,273 m³.

Case

The 12 sets of lights in the two identification stations of the Hunan Changzhu Expressway under the Yuexiu Transport adopted LED energy-saving lamps. Compared with the traditional halogen lamps, the monthly electricity savings was 576 KWH, with a energy-saving rate of 50%.

Green ecology management

Yuexiu Transport attaches great importance to balance between enterprise development and ecological environment, and strictly observes Environmental Protection Law of the People's Republic of China, Water and Soil Conservation Law of the People's Republic of China and other laws and regulations. Before construction of projects, it investigates, predicts and evaluates the effect that projects may have on ecological environment according to the environmental impact assessment system and proposes measures and plans for prevention of ecological damages.

To create a green passage environment, Yuexiu Transport's project companies regularly trim the vegetation along the expressways and interchanges and in the toll stations, strengthen daily greening and maintenance management, so as to improve the overall landscape quality of the roads and bring excellent travel experience for drivers. Besides, we set noise control facilities and drainage facilities to effectively control noise and sedimentation, so as to ensure the life and environment quality of surrounding residents.



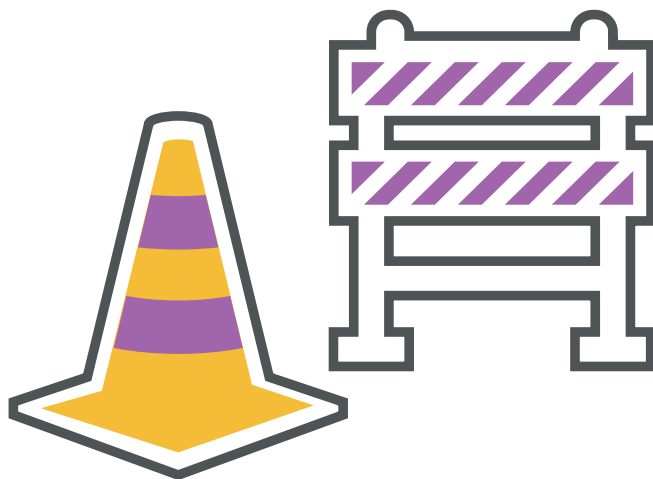
In order to protect the water resources protection areas along Suiyuan Expressway, the impact of traffic accidents on the environment was reduced from road signs, emergency facilities and emergency plans. Suiyuan Expressway has developed an environmental protection risk emergency plan, striving to minimize the risk of accidents to the surrounding environment with an efficient response mechanism. In terms of practical measures, management personnel set up "Water Resources Protection Area" signs on the three bridges across Tongzhou River, Dongjing River and Neijing River to remind drivers to drive carefully; in addition, bridge runoff collection systems and accident pools were also installed on the three bridges to deal with emergencies of dangerous chemicals transportation vehicles and to prevent the leakage of hazardous chemicals from contaminating the water resources.

► Road Sign of Neijinghe Bridge Water Resources Protection Area



In strict accordance with the Law of the People's Republic of China on Road Traffic Safety, Yuexiu Transport is working actively with local government, industry authorities and our peers to promote the development of regional economy and transportation development. The administrative staff of each road will assist the traffic police in maintaining traffic order and keeping the road safe and clear if an accident happens. While keeping improving toll management, we screened road safety risks and intensified expressway maintenance to provide safe, efficient, comfortable road transport services for drivers and passengers.

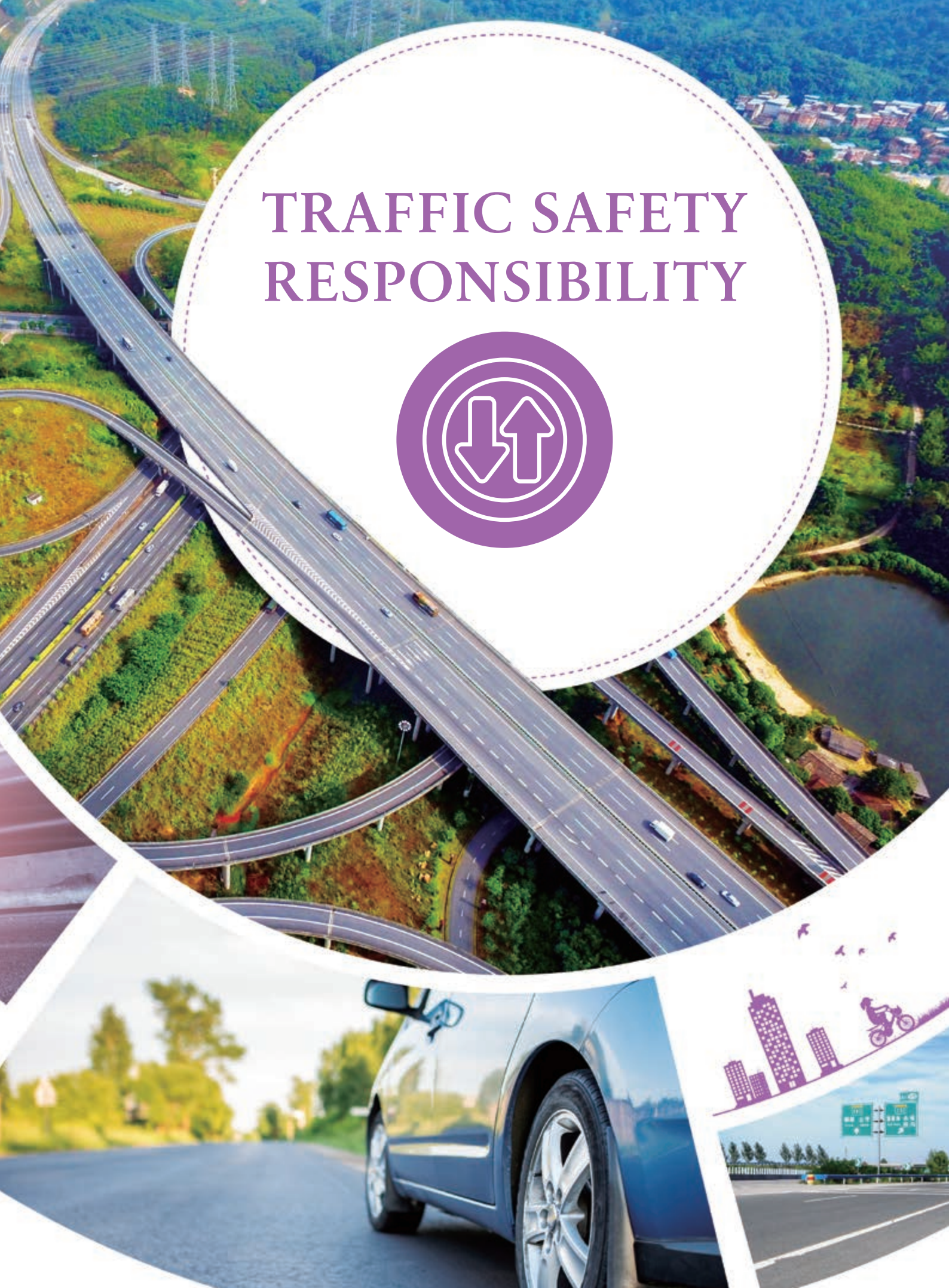
The Company
spent on road
maintenance
in 2017



RMB 96.811 million



TRAFFIC SAFETY RESPONSIBILITY



TRAFFIC SAFETY RESPONSIBILITY

Ensure traffic safety

Highlight daily maintenance of roads and bridges

Yuexiu Transport continued to strengthen road safety management. With the measure of “putting prevention first and combining prevention with control”, the Company spent RMB96.811 million on road maintenance in 2017.

Examine potential road safety risks

The highway brigade of the project companies of Yuexiu Transport strictly conducted 24-hour inspection to timely spot and eliminate various road safety risks. Upon finding major safety risks, the highway brigade timely reported to relevant departments of the company or started the emergency linkage mechanism, working with relevant social institutions and units (traffic police, fire brigade, etc.) to eliminate the risks, so as to provide a safe and clear passage environment for drivers and passengers.

In order to strengthen the supervision and control of road rescue and accident handling, project companies under Yuexiu Transport rapid accident handling stations in service areas, toll stations, and management centres, and established additional traffic police, expressway administration, and rescue preparation booths on the roads, which improved the efficiency of accident handling, shortened the arrival time and the time of accident handling, and alleviated traffic jams.

In order to reduce road safety hazards, management staff of Tianjin Jinbao Expressway were required to regularly conduct safety education for daily maintenance and green conservation workers to improve safety awareness and set up safety signs near the work area in strict accordance with the regulations of the government authorities; at the same time, special personnel were arranged to inspect the safety signs placed around the work area to correct the collapsed signs in time to avoid traffic accidents caused by rolling of the vehicles.



In its daily operations, Hubei Suiyuanan Company found that Zhuji Terminal Interchange, which was located at the junction of Suiyuanan Expressway and Wuyi Expressway, due to the continuous increase of load-carrying vehicles,

there was a certain risk of bridge overturning. Adhering to the attitude of being responsible to the general public, Suiyuanan Company spent more than RMB3.8 million to carry out anti-overturning special rectification project on a total of 22 joint bridges for 8 ramp bridges on Zhuji Terminal Interchange designed with single piers and box girders, mainly adopting technical measures, such as the addition of pile foundation posts and steel cover beams, the addition of anti-draw-out piles and long-bridge abutment beams to ensure the safety and stability of the bridge during operation. As

of December 2017, the main project has been completed, effectively reducing the risk of overturning of the bridge.



▲ Addition of Anti-draw-out Piles

▶ Addition of Pile Foundation Posts and Steel Cover Beams



Case

In order to reduce the impact of large-scale strong rain and snow weather on road safety from late 2017 to early 2018, project companies of Yuexiu Transport, such as Weixu Expressway, Suiyuanan Expressway, Hanxiao Expressway and Changzhu Expressway have planned and deployed for bad weather in advance to ensure safe operation. The project companies mainly implemented anti-freezing and anti-skidding emergency drills, prepared materials in advance, set up inspection teams to strengthen the reporting of bad weather, control the speed of traffic, and timely snow melting and shoveling measures to ensure the safe and uninterrupted operation of the road sections, and protect the drivers and conductors.



- ▲ *Anti – freezing and anti-skidding emergency drill on Changzhu Expressway*
- ◀ *Snow melting and shoveling on Weixu Expressway*
- ▼ *Immediate safety warnings given by Suiyuanan Expressway*



TRAFFIC SAFETY RESPONSIBILITY

Emphasis on Emergency Drills

In order to reduce the Company's casualties and property losses in the course of operations, and strengthen the ability to handle emergencies, Yuexiu Transport formulated the "Production Safety Accident Emergency Plan of Yuexiu Transport Infrastructure Limited (Trial)" in accordance with relevant laws and regulations, each project company also formulated an emergency plan based on the actual conditions of its own operations. At the same time, each project company has established a safety production committee and a leading group for emergency management to ensure the accident emergency response, disaster relief and rescue work to be carried out in an orderly manner, and actively cooperate with the government departments to conduct post-mortem investigations.



On 11 December 2017, the 2017 joint emergency drill of Yuexiu Transport Infrastructure Limited was held at Hanxiao Airport North Toll Station. The drills were undertaken by Hanxiao Company and jointly completed by nine organizations

including Hubei local safety supervision, fire control, traffic police, expressway administration, environmental protection and medical treatment. Zhu Chunxiu, Chairman of Yuexiu Transport, He Baiqing, General Manager of Yuexiu Transport, and local industry and government leaders came to the site to observe for guidance. The drills simulated the rear-end collision of four vehicles and the leakage of hazardous chemicals, resulting in a sudden situation of personal injuries. After the occurrence of the simulated accident, Hanxiao Company immediately initiated an emergency response, and the personnel of each participating organization actively cooperated and united with each other, and the whole process was well-ordered.

He Baiqing, General Manager of Yuexiu Transport gave full affirmation to the drills and hoped that Hanxiao Company would effectively implement the safety concept of "safe and smooth to create value together" of Yuexiu Transport and follow the principle of "emergency coordination, rapid response, proper handling, safe and smooth operation" to further improve the pertinence of drills and continuously enhance the level of emergency response. Yuexiu Transport made a serious summary of the drills: we would effectively fulfill our responsibility of "keep safe, keep smooth, and maintain stable", create a safe and uninterrupted operation of road traffic to achieve a win-win situation for both companies and society.



▲ Site of Emergency Drills



▲ Emergency Drills

Emphasis on Road Safety Education

As expressway operators and managers, the various project companies of Yuexiu Transport not only did well in the management of road and bridge quality and daily inspections, but also proactively disseminated traffic safety information to drivers and conductors, as well as residents around the road, carried out relevant road safety education activities and strove to minimize the occurrence of road safety accidents by stimulating all road safety stakeholders.

Create Convenient and Quality Services

While continuing to comprehensively follow up networked toll collection, billing and charging, and ETC toll collection machines, Yuexiu Transport actively analyzed and responded to any factors that could affect the smooth traffic, and at the same time strengthened the service level of frontline employees and strove to provide quality services to customers. Moreover, we actively participated in industry exchanges, timely reviewed the gap between our own management and the industry's outstanding peers, and strove to achieve the local leading level.

Ensure Smooth Traffic

Faced with traffic flow peaks caused by holiday trips and restricted traffic due to maintenance of connecting road sections, Yuexiu Transport carefully analyzed the specific conditions and adopted practical measures to ensure smooth traffic.



Hunan Changzhu Expressway launched its "Safety Month" campaign focusing on the theme of "comprehensively

fulfilling the main responsibility of corporate safety production" in June 2017. In the past, the drivers and conductors, as well as the neighboring villagers did not understand the relevant laws and regulations of the expressway, and there were acts of discarding rubbish on the expressway and crossing the expressway, forming a certain traffic safety hazard. The company produced promotional leaflets such as "A Letter to Drivers, Passengers and Villages along the Expressway", and organized special personnel to conduct safety propaganda at the toll plaza, service areas, and neighboring villages to raise the safety awareness of road safety participants and reduce road safety risks.



In order to better cope with the higher traffic flow on holidays, Guangzhou Northern Second Ring Expressway combined previous years' experience of ensuring smooth traffic and carried out traffic flow analysis and prediction prior to the holidays, and formulated the "Work Specifications on Ensuring Road Safety and Smooth Traffic during Major Holidays" to clarify the division of labour and the arrangements for duty shift of on-site staff, and prepare adequate supplies in advance, including paper vouchers, notes and portable charging machines, etc., for emergency use when unexpected events occurred. In addition, we strictly abided by the "Emergency Response Measures on Toll Station Emergencies" and strengthened the coordination with the traffic police, road administration, road rescue and other organizations, duty points were increased at the accident-prone road sections, rescuers and vehicles were arranged in advance to improve the efficiency of accident handling, and the impact of accidents on road traffic flow was minimized. Through the above measures, we successfully completed the work of ensuring road safety and smooth traffic during major holidays in 2017.

TRAFFIC SAFETY RESPONSIBILITY



From July to August 2017, due to the maintenance of connecting road sections and the restriction of trucks, Hubei Suiyuanan Expressway ushered in a large number of trucks, lack of crossings, narrow toll plaza and shorter approach bridge and other factors at Jingyue Bridge caused a long queue of passing vehicles. While using the information board and the WeChat public account to publish traffic information, Suiyuanan Company also launched a "Practicing Social Responsibility, Summer Cooling Activities" by distributing cool drinks to drivers and passengers at the expressway service areas and at the entrance of the toll gate to get the driver's understanding and support. In addition, Suiyuanan Company also released the "Measures for Dealing with Congestion at Hubei Jingyue Bridge" through the WeChat public account, provided the drivers with practical driving plans to reduce the impact of congestion on their trips.

Handling of customer complaints

To speed up handling of customer complaints and improve the quality of customer services, the subordinate project companies of Yuexiu Transport formulated a customer complaint handling process according to their own actual conditions. When receiving a complaint, the toll station or other responsible departments should first confirm the complaint and then transfer it to relevant departments for detailed investigation, and give a reasonable and satisfactory reply to the customer as the case may be.

In 2017, we received 96 complaints of all kinds, with a decrease of 78% compared with 2016. We carefully recorded and earnestly handled all complaints. Based on the existing level of customer services, we will keep improving our service quality to meet customers' demands with professional attitudes and reduce complaints.

Statistics on the number of complaints by category received in 2017

Complaints of business	32
Complaints of services	37
Others	27
In total	96



In May 2017, Suiyuanan Company organized a two-day toll collection training session for all the employees to further enhance the overall quality of employees and improve the level of toll collection services.

Through on-site explanations, the training session provided in-depth and detailed explanations on issues such as corporate culture, process duties, toll etiquette, bulk card management, as well as the handling and emergency disposal of toll incidents. During the training, all staff took it seriously and listened carefully. The training session not only enabled all employees of Suiyuanan Company to further acquire knowledge of the toll-based business, but also improved the emergency response capabilities of front-line staff of Suiyuanan Company while facing unexpected situations, laying a solid foundation for providing civilized, high-quality, safe and efficient services in the future.



◀ *Training Session of Suiyuanan Company on Toll-based Business*

Protect consumer privacy

Yuexiu Transport focused on protecting customers' identities and transaction information, the data collected were used only for internal operations to protect customer privacy. In 2017, the Company had no incidents of loss or disclosure of information.

Guangxi Cangyu Expressway has formulated the "Administrative Measures for the Monitoring Centre of Guangxi Yuexiu Cangyu Expressway Co., Ltd.", which clearly stipulated the collection and distribution of toll information and the management and supervision of video data.

Since the Company's business is less involved in areas such as intellectual property, we do not have the usual practice of maintaining and safeguarding intellectual property rights.

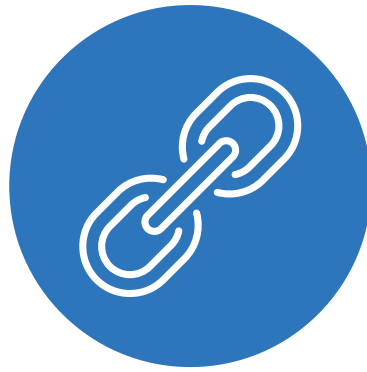
Yuexiu Transport has adhered to focus on a fair, just, open and transparent supply chain management system. In order to specify procurement procedures of the Company and management products and services of suppliers, Yuexiu Transport formulated the Procurement Management System of Yuexiu Transport Infrastructure Limited (Trial), making sure that the commodities procured in projects or programs of the Company meet relevant requirements and realize whole-course monitoring and management over the supply chain. We hope to do our utmost to fulfill our corporate responsibilities, and we will take practical actions to promote the sustainable development of the Company and our suppliers by strengthening the management of suppliers and setting strict requirements for procurement standards.



The number of
suppliers in 2017

626





SUPPLY CHAIN MANAGEMENT



SUPPLY CHAIN MANAGEMENT

Responsibility-based procurement

In order to regulate the management of supplier development, evaluation and assessment, Yuexiu Transport has formulated the Procurement Management System of Yuexiu Transport Infrastructure Limited (Trial), Supplier (Contractor) Library Management System, Procurement Management System, as well as Expressway Engineering Bidding Management Measures and other policies, and strictly supervised the relevant implementation.

Various procurement divisions mainly took the following measures to ensure effective procurement management:

Measures for Procurement Management



Follow the principle of objectivity and impartiality, make judgments based on objective facts and treat all suppliers equally.



Require all suppliers to provide business license, franchise license, business qualification certificate and other qualification documents.



Establish a purchased item based supplier database and pay special attention to suppliers' qualifications, past performance and performance of contracts. Archive the supplier database, file original procurement contracts and contract review data with the office archivist, and store other electronic materials in CDs or other media. Regularly evaluate and update the supplier list (from the perspectives of supply capacity, product price, service quality, convenience of transportation, after-sales service, performance of procurement contract, etc.);

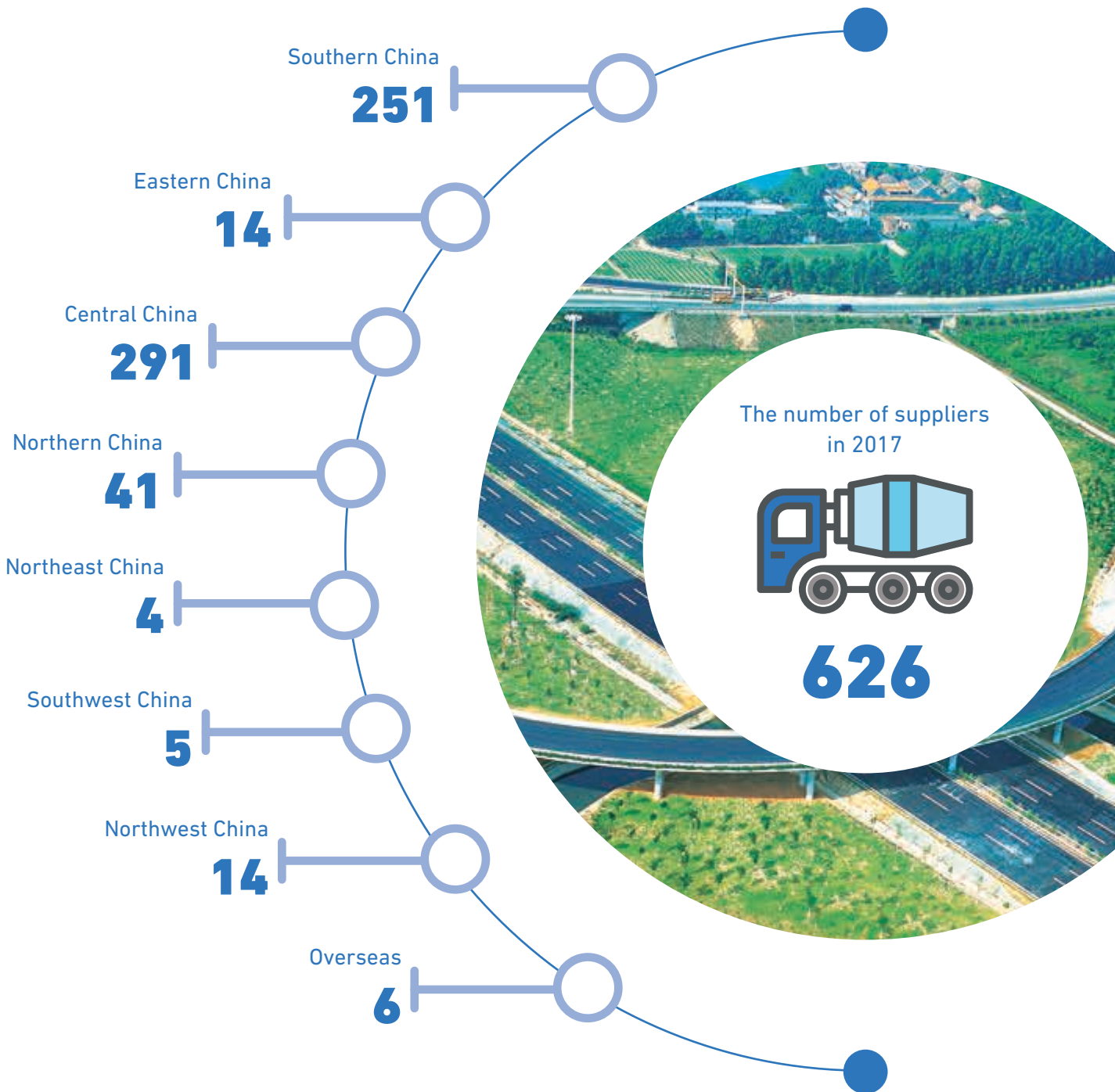


Record the evaluation results in the Supplier Database and optimize the procurement procedure and supplier management accordingly; eliminate those suppliers who cannot meet the requirements of the Group from the supplier base upon review by the department head and approval by responsible managers.

Promote regional diversified procurement

Maintaining a good relationship with various suppliers nationwide, Yuexiu Transport strove to build an effective supply chain network and achieve win-win results with its partners.

Number of suppliers classified by region in 2017



Note: The supplier's region is based on its place of registration.



EMPLOYMENT



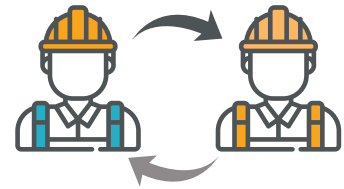


Yuexiu Transport firmly believes that employee is the greatest resource of the Company and the solid footstone for creating excellent performance as well as the key driver for an enterprise's sustainable development. We have been pursuing the "people-oriented" management idea, providing all employees with a relatively competitive compensation and benefit system, a broad career development channel, and brilliant employee activities, paying attention to employees' physical and mental health, professional ethics, job skills and career development, and being committed to providing all the employees with a fair and impartial employment environment and a career platform where they can freely display their skills and creativity.



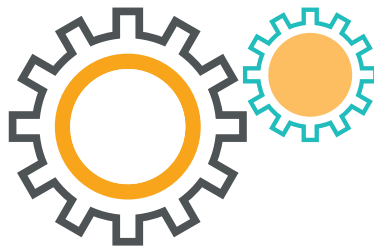
Total number of employees

1,482



Employee turnover rate

12.36%



Total training hours

46,395 hours



The average training hours completed per employee

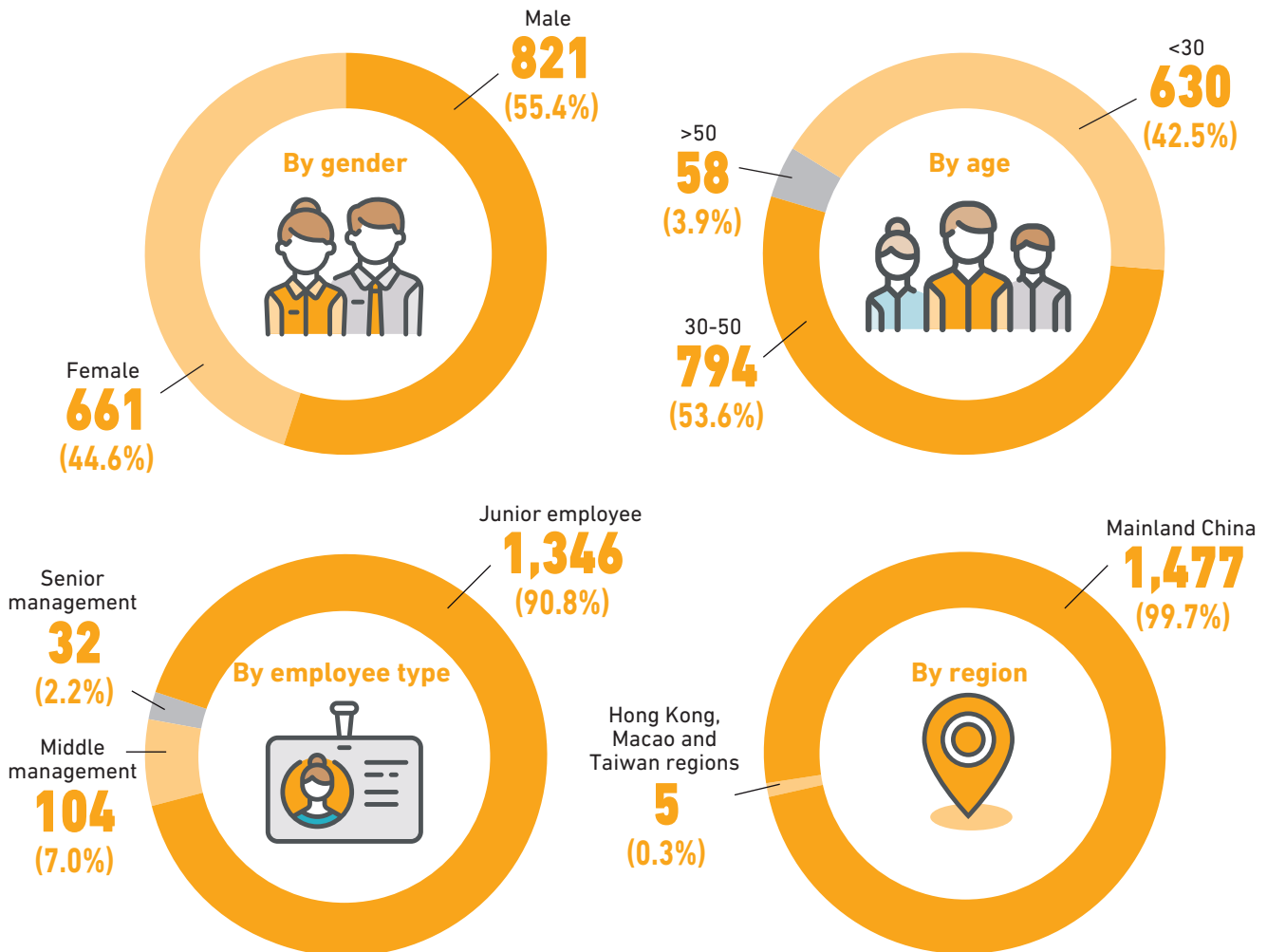
31 hours

EMPLOYMENT

Diversified employee team

Yuexiu Transport insists on the people-oriented management idea, promotes employee diversity, respects and embraces each employee, and eliminates the discrimination due to factors such as gender, ethnicity, religious beliefs, and cultural differences. We have accordingly formulated the Recruitment Management System of Yuexiu Transport Infrastructure Limited, improved and standardized the Company's recruitment management process to ensure the rationality and fairness of the introduction of talents, implemented equal and non-discriminatory labour use policies and built a diversified employee team. Yuexiu Transport will not tolerate unethical labour practices such as child labour and forced labour; under strict company policies and conscious observance, the Company has never had any irregularities or complaints related to the use of child labour or forced labour.

Total number of employees **1,482**



Comprehensive protection of rights and interests

In strict accordance with laws and regulations such as the Company Law of the People's Republic of China, the Labour Law of the People's Republic of China and the Provisions on the Prohibition of Using Child Labour, Yuexiu Transport effectively protects employees' labour rights and interests. The Company has stipulated clearly the legal rights and interests of employees such as working time and signing labour contracts in accordance with the Administrative Measures for Labour Contract, Personnel Labour Management Regulations and Employees Attendance Management System and the employee labour contracts, ensuring the legitimate rights and interests of employees upon entering employment, i.e., signing labour contracts, appropriate and reasonable working hours.

Yuexiu Transport attaches great importance to the welfare and care for female employees. The "Employee Attendance Management System" has formulated relevant regulations in accordance with relevant laws and regulations for maternity leave, pregnancy leave, and breastfeeding leave for female employees, effectively protecting the physical health of female employees, balancing the family and work, and protecting the legal rights of female employees.

Salary System

In respect of the salary system, the Company complies with laws and regulations such as the Social Insurance Law of the People's Republic of China and the Tax Law of the People's Republic of China, providing employees with competitive salary and welfare, and cares for employees' physical and mental health, so as to protect employees' rights and interests.

To establish a reasonable salary incentive mechanism, Yuexiu Transport has formulated the Salary Management Methods of Yuexiu Transport Infrastructure Limited. Our employee's salary mainly consists of regular salary, performance bonus and welfare allowance. In respect of salary management, the enterprise's interests are closely related to the employees' interests and salary is determined based on job duties so as to reflect internal reasonableness of salary system; the performance bonus is determined and issued based on the Company's overall business performance and appraisal of departments and individuals; the welfare allowance is determined according to national laws and the Company's rules and regulations.

In consideration of changes in national policies, price level and industry competition, the Company adjusts the salaries of all employees according to market surveys and evaluation results, so as to keep the Company's market competitiveness and mobilize employees' work initiatives. Meanwhile, according to employees' rank changes and different performances, the Company also sets detailed provisions on adjustment of individual salary, in order to ensure reasonable and fair salary payment to the greatest extent. Yuexiu Transport provides employees with strongly competitive welfare, including statutory welfare and corporate welfare. Statutory welfare covers social insurances and housing provident funds specified by laws and regulations. Corporate welfare includes assignment allowance, enterprise annuity, traffic allowance, communication allowance, medical allowance, lunch allowance as well as employee welfare arranged with labour union dues. Apart from public holidays and holidays temporarily announced by the government, employees may also enjoy annual leave, marriage leave, maternity leave/paternity leave, funeral leave, personal leave and sick leave according to the state's or the Company's regulations provided that they complete relevant procedures in advance.

EMPLOYMENT

Safety and Health Protection

Yuexiu Transport tries to guarantee all employees' health and safety and further provides employees with a safe and comfortable work environment. The Company provides each on-the-job employee with relevant labour protection and equips all the outdoor workers with safety protection equipment such as reflective vests and gloves when they are at work, so as to take effective control over activities related to occupational health and environmental safety. Furthermore, the Company arranges a complete body checks for employees every year, so as to effectively prevent occupational diseases. The Company also offers occupational health training on a regular basis and provides employees with occupational safety and health education and guidelines. Yuexiu Transport is committed to creating a harmonious working atmosphere and a safe working environment for the employees and protecting employees' physical and mental pleasure with the care for them.

2017 Statistics of work-related injuries and work-related deaths of Yuexiu Transport



Occupational safety and protection measures for the staff of Guangxi Cangyu Expressway:

- 1) The special types of work, toll stations, guards and other staff are equipped with necessary safety protection supplies, such as electrical protective clothing, insulation shoes and seat belts.
- 2) The company has provided toll station staff and security guards with stab-resistant clothing, helmets, explosion-proof forks and anti-riot sticks, kitchen workers with anti-skid shoes and other equipment to ensure the safety of workers' lives.
- 3) The company has installed alarm systems in bill management rooms and gas storage rooms to ensure the safety of the company's fund notes and gas storage rooms.
- 4) In accordance with the requirements in the Headquarters' Safety Guidelines for basic safety facilities, fire extinguishers, fire blankets, emergency lighting, emergency evacuation signs, and safety warning signs were added; the toll gate safety lane markings were updated and the installation of the deceleration zone at the entrance of the toll plaza was completed.
- 5) The One-method and Three-card management and control mechanism has been established in key locations of the company's generator room, power distribution room, kitchen, dormitory, fitness room, warehouse, toll station, monitoring centre, and gas house, and has been publicized on the wall.
- 6) According to the requirements in the Headquarters' Safety Guidelines, the Company has completed the preparation of 19 systems, such as Safety Production Responsibility System, Safety Production Commitment, Safety Investment Management, Risk Management, Operational Safety Management, Logistic Safety Management, Special Operations Management, "Three Simultaneous" Management, Inflammable and Explosive Dangerous Goods Management, Safety Inspection Management, Related Party Supervision, Safety Conference Management, Emergency Response Management, Safety Accident Management, Safety Education Management, Safety Production Document Data Management, Confidentiality Work System, Management of Keeping Stability by Petition, Safety Assessment Rewards and Penalties System, and completed the publications of key post safety operation procedures.



▲ Visit and condolences from company leaders and union representatives

Case

In July 2017, team leader of Xingou Toll Station at Hubei Suiyuanan Expressway needed to be sent to the hospital for surgery due to sudden space-occupying lesions of the brain and was facing high medical expenses. After learning of this, the Labour Union of Suiyuanan Company immediately organized members of the labour union committee to hold a meeting and issued a fundraising petition. The management of Suiyuanan Company and all employees have raised a fund of RMB18,471 in total. Later, the leader of Labour Union and other staff of Suiyuanan Company visited this employee at his home, expressed sympathy and sent the donations, which made him and his family greatly grateful and encouraged. In addition, each labour union team also encouraged him to defeat the disease and return to the “family” of Suiyuanan Company through the WeChat “Love Passing” group by recording small videos and making an electronic memory book.

Fair and sound vocational development

Yuexiu Transport attaches great importance to employees’ vocational development. By establishing a sound staff assessment system, staff training system and professional manager promotion system, Yuexiu Transport aims to improve the professional skills of employees and pave the way for their vocational development. By formulating the Staff Performance Appraisal Measures of Yuexiu Transport Infrastructure Limited, the Company effectively developed the performance management culture of Yuexiu Transport and gave full play to the role of performance management, as well as made employees and the Company work for the same goal.

According to the measures, the Company, taking balanced scorecard as the basis for performance management and job specification as the form of performance appraisal, set annual performance assessment indexes and objectives from the perspectives of finance, customer, internal process and individual growth and delegated them to managers at various levels according to the business plans of the Company and work plans of various departments. The performance assessment results were linked up with employees’ remuneration, welfare and promotion as a way to stimulate well-performing employees.

Employee training

Yuexiu Transport formulated and effectively carried out the Training Management Measures of Yuexiu Transport Infrastructure Limited, so as to realize continuous, systematic and standardized employee training, constantly improve the knowledge, work capacity and professionalism of employees, and effectively promote the achievements of both the personal development goals of employees and the long-term development strategy of the Company.

We provided employees with diversified training forms, including external training, internal training, seminars and sharing, on-line training, self-learning and other activities to create an excellent training and learning atmosphere.

EMPLOYMENT

Training types

External training



respective departments may, as necessary, invite their employees to the training programs held by Yuexiu Group, external training organizations or competent authorities in the industry.

Internal training



including induction training organized by the Human Resources Department for new employees, special training hosted by relevant departments for all employees, skill training hosted by relevant business departments of the Head Office for relevant business personnel, and internal training organized by various departments themselves according to their business needs.

Seminars and sharing



organized by the Human Resources Department or relevant departments in the Company.

On-line training



organized by the Human Resources Department via external procurement or internal development network training platform.

Self-learning



employees may study independently based on their job natures to improve their skills.

Statistics of Employee Training of Yuexiu Transport in 2017

Classification standards	Classified by employee category		Classified by gender		In total
	Management	Non-management	Female	Male	
Number of employees under training	757	5,450	2,683	3,524	6,207
Total training hours	5,783	40,612	19,026	27,369	46,395



Yuexiu Transport Organized a Training Course for Studying and Implementing the Spirit of the 19th CPC National Congress

From 30 November to 1 December 2017, Yuexiu Transport held a special training course for the implementation of the spirit of the 19th CPC National Congress at Guangzhou International Finance Centre. More than 120 people participated in the special training, including the Company's leadership team, all members of the Headquarters and employees, and expatriate management personnel of the Company's subsidiaries.

In a mobilization speech at the opening of the course, Qian Shangning, Party Secretary of Yuexiu Transport, the majority of Party members of the Company must strengthen ideological study and education, regard learning and implementing the spirit of the "19th National Congress" as the primary political task, accurately grasp the spiritual essence and rich connotation of Xi Jinping's socialist ideology with Chinese characteristics in the new era, and better arm the mind, guide practice, and promote work; He Baiqing, Deputy Chairman and General Manager of Yuexiu Transport, gave a special lecture titled "Keeping up with the New Era and Master the Big Trend"; Ding Jinqing, Director of the Theory Division of the Propaganda Department of the Guangdong Provincial Party Committee of the Communist Party of China, made a topical guidance report on the report of the 19th CPC National Congress, profoundly expounding the historical contributions and rich connotations of Xi Jinping's socialist ideology with Chinese characteristics in a new era.



▲ Training Course of the spirit of the 19th CPC National Congress, Scene

The executive management of Yuexiu Transport fully affirmed the training and believed that this training was of rich content and clear theme, through thematic counseling and sharing of experiences, the trainees were guided to closely combine the spirit of the 19th CPC National Congress with the Company's development and continuously promote the Company's leapfrog development.



◀ Training Course of the spirit of the 19th CPC National Congress, Scene



*“Craftsman” Project of Yuexiu Transport -
The Spirit of “Craftsman” Encouraged us Again*

On 29 November 2017, Yuexiu Transport Engineering Maintenance Professional Line “Craftsman” Project Module 2 training was successfully carried out on the 17th floor of Guangzhou International Finance Centre, a total of 65 people participated in the training. The “Craftsman” training was based on professional technology and lasted for three days, consisting of analysis of processes and systems, re-compilation of actual cases, and lectures by industry experts; the training fully integrated internal and external high-quality resources, mobilized the enthusiasm of learning, and guided trainees to reflect on their daily work and processes, which reflected the design theme of the professional line talent development project, i.e. “starting from reality and serving the business”.

He Baiqing, Deputy Chairman and General Manager of Yuexiu Transport, expressed that, he hoped that the employees would strive to become the transport craftsman with “ideals, responsibility, aptitude, and opportunity” on the basis of “striving for improvement, perseverance, love and respect, and upholding innovation”, and should match their life orientation with the development of transportation, be brave enough to take the initiative to win opportunities and development.

In 2018, the Company will carry out training on follow-up modules of “Craftsmen” around “capacity promotion”, aiming to require trainees to be honest, self-disciplined, down-to-earth, and innovative, and to make Yuexiu Transport engineering maintenance a brand.



▲ “Craftsman” Project Training Scene



Group Photo ▶



◀ “Craftsman” Project Course Training



Case

*Yuexiu Transport 2017 "One-Soar" Project
- Create Training Platform for
New Employee*

Yuexiu Transport "One - Soar" project for new employee training was successfully launched on 1 August 2017 at the 17th floor of the Guangzhou International Financial Centre, the leaders of Yuexiu Transport attended the first phase of the project and approximately 20 new employees participated in the training.

The "One - Soar" project was the latest new employee training platform created by Yuexiu Transport, "One" referred to starting, "Soar" referred to spread wings and soar, the establishment of project aimed to promote the standardization and systematization of new employee training, helping new employees to understand the Company's policies, systems, and corporate culture in a timely and accurate manner, speed up the integration of new employees into the organization, effectively master job information, and improve employees' sense of belonging.



▲ *New Employee Discussion during "One - Soar" Project Training*



▲ *"One - Soar" Project Training Scene*



Case

*Suiyuenan Company "Safety and Health Cup"
Production Safety Knowledge Contest*

In order to further strengthen the Company's publicity and education work on production safety, popularize legal knowledge of production safety, and enhance the safety awareness of all employees, on 29 August 2017, the 2017 "Safety and Health Cup" Production Safety Knowledge Contest was held by Suiyuenan Company's Labour Union together with the Security Committee Office. Chen Kemin, Chairman of the Company's Labour Union, Chen Yu and Jia Yonghui, Deputy General Managers of the Company, visited the site for observance and instructions.

The Contest was divided into two parts: skills contest and safety knowledge contest, aiming to enhance the initiative of employees to learn safety knowledge, to make them master the knowledge of national security laws and regulations, and know the relevant requirements of company safety management and fire control management.



▲ *Fire Drill Scene*



▲ *Safety Accident Simulation Exercise*



◀ *Complete Success of "Safety and Health Cup" Production Safety Knowledge Contest*

EMPLOYMENT

Promotion plan

To optimize the Company's allocation of human resources and establish a transparent, efficient, fair and healthy talent selection mechanism, Yuexiu Transport formulated the Interim Measures for the Management of Professional Manager Competitive Post System of Yuexiu Transport Infrastructure Limited. The Company adhered to the principle of openness, equality, competition and merit in talent selection and assessed the ability and quality of candidates through written examinations, interviews, scenario simulation, lecture, competency assessment, etc., picking ethical, competent, well-performing and experienced talents to achieve "win-win" results with the Company.

Vivid lifestyle of employees

Yuexiu Transport promotes the balance between work and life, a relaxed and happy life helps maintain the full mental state of employees. In 2017, the Company held a variety of activities including sports competitions, festival celebrations, and master chef competition, which not only strengthened the Company's team cohesion but also enriched the employees' spiritual life.



Team development training and business sharing activities of Yuexiu Transport Financial System

From 25 to 27 May 2017, a total of 30 people participated in the team development, business exchange and business sharing activities of the Yuexiu Transport Financial System, including He Baiqing, the Company's General Manager, Zhu Wenbo, the Company's CFO, all staff from Headquarters' Finance Department, financial heads and officers from subsidiaries. During the two days of development and sharing activities, the financial staff of Yuexiu Transport united and worked together, they not only successfully completed the 12-km walk-out activities, but also shared the financial highlights of the subsidiaries, highlighting the important role of financial management in the work.



▲ Group Photo at Team Building Training Scene



▲ Group Photo of Team Building Training



Case

Guangzhou Northern Second Ring Expressway Company 2017 "National Day and Mid-Autumn Festival" Party

In order to enrich the cultural life of employees during spare time, increase team cohesion and centripetal force, Northern Second Ring Expressway Company held the 2017 "National Day and Mid-Autumn Festival" party at the Management Centre on 25 September 2017. All employees of the Company actively participated in the party, everyone enjoyed the delicious food, played games in a happy and orderly manner, and jointly celebrate the upcoming National Day and Mid-Autumn Festival.



▲ Northern Second Ring Expressway Company Employee Performance during Park Visit



◀ Northern Second Ring Expressway Company Park Visit Scene



Case

Splendid Master Chef - "Taste and Suiyuenan" First Cooking Competition of Suiyuenan Company

On 14 June 2017, the company's staff cafeteria was full of scent and excitement, the "Taste and Suiyuenan" Staff Cooking Competition held by the company's Labour Unions was being carried out in full swing here, 16 employees from various departments, toll stations and the Jingyue Bridge participated in the competition. The competition was divided into four common competitions: dietary knowledge, skill of cutting up vegetables and meat, designated dishes, and special dishes; the players tried their best to cook dishes full of flavors. The judges tasted and judged these dishes from the aspect of appearance, texture, taste, nutrition and hygiene as well as innovative techniques of the dishes, and finally selected the champion, second runner-up, third runner-up, and outstanding awards.

Wang Zhiyong, General Manager of the company, fully affirmed the event, and company's Labour Union has well organized the event through the use of limited resources, limited environments, and limited materials. The company exchanged learning through the event, aiming to enrich the lives of employees and balance their work and life.



▲ Cooking Competition Scene



▲ Group Photo of Cooking Competition



COMMUNITY CONSTRUCTION





Yuexiu Transport is committed to creating a harmonious and beautiful community environment. While maintaining a good shape of corporate development, we always adhere to the concept of “sharing development and giving back to society”, give full play to the advantages of the Company’s platform and resources, provide financial and technical support for vulnerable groups, try to maintain the surrounding people’s living environment, and contribute to building a harmonious society through diverse community activities.

As of the end of 2017, Yuexiu Transport has accumulatively provided more than



for targeted poverty alleviation

COMMUNITY CONSTRUCTION

Targeted Poverty Alleviation

Since 2016, Yuexiu Transport has implemented the requirements for the deployment of the Yuexiu Group's poverty alleviation and development work to carry out precision poverty alleviation work in Xianshui Village⁶, Xiniu Town, Yingde City, Guangdong Province. As of the end of 2017, Yuexiu Transport has accumulated more than RMB5 million in investment for Xianshui Village on poverty alleviation such as industrial support, construction of the village's appearance, dilapidated housing renovation, festival condolences, establishment of archives and cards, education subsidies for children in poor households, purchase subsidies for social security insurance for poor households, etc.

Charity

Yuexiu Transport organizes employees to carry out various social charity activities, caring for vulnerable groups, and providing help to people in need.



▲Condolence at Xianshui Village



◀Purchasing Insurance for Villagers



Village Renovation - ▶ Basketball Court

Case

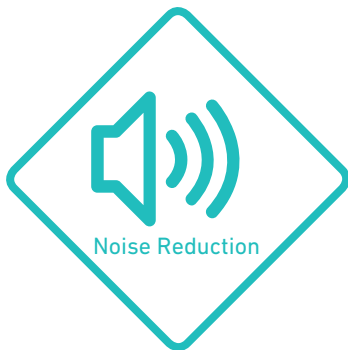
"Learn from Lei Feng" Activities by Henan Weixu Expressway Company

Weixu Expressway Company, as a project company under Yuexiu Transport, carries out the "Learn from Lei Feng" activities every year. In March 2017, the company called on employees to participate in voluntary services, they went to the local nursing home to visit the elderly, purchased nutritional products for them, and helped them with cleaning and chatted with them. The activity not only provided support for the elderly in daily life, but also encouraged the employees to cultivate good moral character to help others and contribute to creating a harmonious and warm community environment.

⁶ Based on the work arrangement for Yuexiu Transport in Group Targeted Poverty Alleviation Work Plan established by Guangzhou Yuexiu Holdings Limited, we carried out in-depth research on Xianshui Village, formulated and implemented specific measures based on the result to carry out accurate poverty alleviation work.

Community Inclusion

Yuexiu Transport pays attention to the quality of life of surrounding residents and is committed to maintaining the ecological environment and living environment around the operating site. In accordance with the relevant regulations in the Design Specifications of Highways Environmental Protection (JTJ/T006-98), we actively responded to the relevant opinions of the environmental protection departments on the acceptance of environmental protection related road sections, and at the same time carefully listened to the relevant demands of neighboring residents, actively carrying out such tasks as highway noise reduction, siltation and dredging, so as to create a healthy and environmentally friendly living environment for residents.



In view of the behavior of passing vehicles on the residential areas on both sides that may cause excessive noise, various project companies under Yuexiu Transport prompted the passing vehicles to slow down and prohibit whistle when passing schools and residential areas through the installation of speed limits, no whistle signs and other measures, so as to minimize the disturbance to nearby residents during the passage of vehicles. In order to minimize the impact of noise on sensitive points along the line and ensure a good living environment for the surrounding residents, noise reduction engineering measures have been taken by the staff of Suiyuanan Expressway for sensitive points with a super-scalar quantity; a light sound barrier with a total length of 1,311 metres and a flower sound-absorbing brick soundwall with a total length of 607.9 metres was set at 7 environmentally sensitive points.



▲ Noise Barrier



▲ Soundwall



The staff of Hubei Suiyuanan Expressway coordinated the surrounding village groups, used mechanical equipment to organize dredging, introduced sewage treatment system and professional cultivation of strains, strengthened the maintenance of sewage treatment system, and resolved the siltation and poor drainage of side ditches at Xiantao and Jianli service areas that affected the farmland and other situations. At the same time, the drainage channels and gutters under the bridge were dredged to ensure normal irrigation of the farmland under the bridge.

LIST OF POLICIES FOR SUSTAINABLE DEVELOPMENT

ESG	Laws, Regulations and Policies to Comply with
A1 Emissions	Laws and Regulations Environmental Protection Law of the People's Republic of China Law of the People's Republic of China on the Prevention and Control of Environmental Pollution by Solid Wastes Law of the People's Republic of China on the Prevention and Control of Water Pollution Law of the People's Republic of China on the Prevention and Control of Atmospheric Pollution National Hazardous Waste Inventory
A2 Use of resources	Laws and Regulations Energy Conservation Law of the People's Republic of China Cleaner Production Promotion Law of the People's Republic of China
A3 The environment and natural resources	Laws and Regulations Environmental Protection Law of the People's Republic of China Water and Soil Conservation Law of the People's Republic of China
B1 Employment	Laws and Regulations Labour Law of the People's Republic of China Labour Contract Law of the People's Republic of China Social Security Law of the People's Republic of China Tax Law of the People's Republic of China Management Policies Recruitment Management System of Yuexiu Transport Infrastructure Limited Administrative Measures for Labour Contract of Yuexiu Transport Infrastructure Limited Administrative Measures for Remuneration of Yuexiu Transport Infrastructure Limited Administrative Measures for Employee Attendance of Yuexiu Transport Infrastructure Limited Administrative Measures for Employee Performance of Yuexiu Transport Infrastructure Limited

ESG Scope	Laws, Regulations and Policies to Comply with
<p>B2 Health and safety</p>	<p>Laws and Regulations</p> <p>Labour Law of the People's Republic of China Labour Contract Law of the People 's Republic of China Social Insurance Law of the People's Republic of China</p> <p>Management Policies</p> <p>Management of Safety Production of Yuexiu Transport Infrastructure Limited Emergency Preparation Plan for Safety Production Accidents of Yuexiu Transport Infrastructure Limited Administrative Regulations on Safety Production Information of Yuexiu Transport Infrastructure Limited Safety Production Conference System of Yuexiu Transport Infrastructure Limited Administrative Measures for Building of Volunteer Fire Brigade of Yuexiu Transport Infrastructure Limited Guidance Manual for Safety Production in Office Areas of Headquarters of Yuexiu Transport Infrastructure Limited</p>
<p>B3 Development and training</p>	<p>Laws and Regulations</p> <p>Labour Law of the People's Republic of China Labour Contract Law of the People 's Republic of China Social Insurance Law of the People's Republic of China</p> <p>Management Policies</p> <p>Administrative Measures for Training of Yuexiu Transport Infrastructure Limited</p>
<p>B4 Labour standards</p>	<p>Laws and Regulations</p> <p>Labour Law of the People's Republic of China Labour Contract Law of the People 's Republic of China Social Insurance Law of the People's Republic of China</p> <p>Management Policies</p> <p>Recruitment Management System of Yuexiu Transport Infrastructure Limited Administrative Measures for Labour Contract of Yuexiu Transport Infrastructure Limited</p>
<p>B5 Supply chain management</p>	<p>Laws and Regulations</p> <p>Company Law of the People's Republic of China Contract Law of the People 's Republic of China</p> <p>Management Policies</p> <p>Procurement Management System of Yuexiu Transport Infrastructure Limited (Trail)</p>

LIST OF POLICIES FOR SUSTAINABLE DEVELOPMENT

ESG Scope	Laws, Regulations and Policies to Comply with
<p>B6 Product responsibility</p>	<p>Laws and Regulations</p> <p>Law of the People’s Republic of China on Road Traffic Safety</p> <p>Management Policies</p> <p>Administrative Measures for Road Maintenance Engineering of Yuexiu Transport Infrastructure Limited</p> <p>Administrative Measures for Emergency Projects of Yuexiu Transport Infrastructure Limited</p> <p>Administrative Measures for Post-assessment of Road Maintenance Engineering of Yuexiu Transport Infrastructure Limited</p> <p>Administrative Measures for Final Acceptance (Handover) of Road Maintenance Engineering of Yuexiu Transport Infrastructure Limited</p>
<p>B7 Anti-corruption</p>	<p>Laws and Regulations</p> <p>Hong Kong Special Administrative Region ICAC Ordinance</p> <p>Hong Kong Special Administrative Region Prevention of Bribery Ordinance</p> <p>Management Policies</p> <p>Detailed Rules for Implementation of the Responsibility System of Development of Party Style and Honest Administration of Yuexiu Transport Infrastructure Limited</p>
<p>B8 Community Investment</p>	<p>Management Policies</p> <p>Group Targeted Poverty Alleviation Work Plan</p>

DATA TABLE

Indicators	Unit	Data	Note
Environmental indicators			
Emissions			
Sulfur dioxide	Kg	6.59	
Total emission of greenhouse gas	in tons of CO ₂ e	8,541	
Greenhouse gas emission intensity	in tons of CO ₂ e/RMB1 million revenue	3.16	
Greenhouse gas emission intensity	in tons of CO ₂ e/person	5.76	
Greenhouse gas emissions (Scope 1)	in tons of CO ₂ e	1,338	
Greenhouse gas emissions (Scope 2)	in tons of CO ₂ e	7,203	The disclosures in this report cover the power consumption of expressway lighting and maintenance, and other sources of power consumption. Hence, the figures are different from those set out in the annual report 2016.
Hazardous wastes			
Waste fluorescent tube	Piece	1,611	
Printer toner cartridge	Piece	628	
Non-hazardous wastes			
Bituminous concrete	Ton	25,470	
A4-sized office paper	Kg	6,330	

DATA TABLE

Indicators	Unit	Data	Note	
Environmental indicators				
Energy consumption in total and intensity				
Energy consumption in total	Million KWh	34.48		
Intensity of energy consumption	KWh/RMB1 million revenue	12,758		
Power consumption	KWh	11,157,990	The disclosures in this report cover the power consumption of expressway lighting and maintenance, and other sources of power consumption. Hence, the figures are different from those set out in the annual report 2016.	
Petrol consumption	Litre	302,213		
Diesel consumption	Litre	128,100		
LPG consumption	Ton	85		
Natural gas consumption	m ³	4,337		
Use of resources				
Pitch mixture	Ton	48,456		
Cement concrete (new)	Ton	13,280		
Cement concrete (recycled)	Ton	168		
Building stones	Ton	1,183		
Snowmelt agent	Ton	1,161		
Curing agent	Ton	2		
Paint	Ton	11		
Steel	Ton	148		
Toll paper	Ton	14		
Water consumption in total and intensity				
Water consumption in total	m ³	195,026		
Water consumption per capita	m ³	131.60		

Indicators	Unit	Data	Note
Social indicators			
Total workforce			
Total number of employees	Person	1,482	
by gender			
Male	Person	821	
Female	Person	661	
by type			
Senior management	Person	32	
Middle management	Person	104	
Junior employees	Person	1,346	
by age group			
29 and below	Person	630	
30-49	Person	794	
50 and above	Person	58	
by region			
Mainland China	Person	1,477	
Hong Kong, Macau and Taiwan	Person	5	
Staff turnover and turnover rate			
Overall staff turnover rate	%	12.36	Overall staff turnover = the number of departed employees from the group during the year/(the number of employees in the group at the beginning of the year + the number of enrolled employees in the group during the year)

DATA TABLE

Indicators	Unit	Data	Note
Social indicators			
Staff turnover and turnover rate			
by gender			
Male	%	13.10	
Female	%	11.29	
by age group			
29 and below	%	16.18	
30-49	%	7.30	
50 and above	%	16.92	
by region			
Mainland China	%	12.35	
Hong Kong, Macau and Taiwan	%	14.29	
Overseas	%	N/A	The Company has no overseas employees either in service, enrolled or departed in 2017.
Health and safety			
Work-related fatalities	Person	0	
Number of work injuries		6	
Total days of labour loss due to work injury	Day	344	
Employee training times			
Total training times	person-times	6,207	
by gender			
Male	person-times	3,524	
Female	person-times	2,683	
by type			
Senior management	person-times	147	
Middle management	person-times	610	
Junior employees	person-times	5,450	

Indicators	Unit	Data	Note
Social indicators			
Employee training hours			
Total training hours	Hour	46,395	
by gender			
Male	Hour	27,369	
Female	Hour	19,026	
by type			
Senior management	Hour	1,393	
Middle management	Hour	4,390	
Junior employees	Hour	40,612	
Supply chain management			
Total number of suppliers		626	
Southern China		251	
Eastern China		14	
Central China		291	
Northern China		41	
Northeastern China		4	
Southwestern China		5	
Northwestern China		14	
Hong Kong, Macau, Taiwan and overseas		6	
Complaint statistics			
Total number of complaints		96	
Business related complaints		32	
Service related complaints		37	
Other complaints		27	

Indicators	Unit	Data	Note
Social indicators			
Anti-corruption			
Number of pending and concluded legal cases regarding corrupt practices	Case	0	
Community investment			
Volunteer activities	in thousand RMB	49.0	
Targeted poverty alleviation	in thousand RMB	3,520	

CONTENT INDEX OF THE ENVIRONMENTAL, SOCIAL AND GOVERNANCE REPORTING GUIDE

The Index describes the Company's compliance with the "Comply or Explain" and the "Recommended Disclosure" requirements under the Environmental, Social and Governance Reporting Guide during the reporting period.

Aspect	Key performance indicators	Disclosure	Disclosure In page	Note
A. Environment				
General disclosure	Policies relating to air and greenhouse gas emissions, discharges into water and land, and generation of hazardous and non-hazardous waste.	●	P22-27	
A1.1	The types of emissions and respective emissions data.	●	P23	
A1.2	Greenhouse gas emissions in total and intensity.	●	P23	
A1.3	Total hazardous waste produced and intensity.	●	P23	
A1.4	Total non-hazardous waste produced and intensity.	●	P23	
A1.5	Description of measures to mitigate emissions and results achieved.	●	P23	
A1.6	Description of how hazardous and non-hazardous wastes are handled, reduction initiatives and results achieved.	●	P24	
General disclosure	Policies on efficient use of resources, including energy, water and other raw materials.	●	P25	
A2.1	Energy consumption in total and intensity.	●	P25	
A2.2	Water consumption in total and intensity.	●	P25	
A2.3	Description of energy use efficiency initiatives and results achieved.	●	P26	
A2.4	Description of whether there is any issue in sourcing water that is fit for purpose, water efficiency initiatives and results achieved.	●	P26	
A2.5	Total packaging material used for finished products and with reference to per unit produced.	N/A	N/A	Due to the nature of the company's business, no packaging materials for finished products would be generated.

Aspect	Key performance indicators	Disclosure	Disclosure In page	Note
General disclosure	Policies on minimising the issuer's significant impact on the environment and natural resources.	●	P27	
A3.1	Description of the significant impacts of activities on the environment and natural resources and the actions taken to manage them.	●	P27	

B. Society

Employment and labour practices

General disclosure	Policies relating to compensation and dismissal, recruitment and promotion, working hours, rest periods, equal opportunity, diversity, antidiscrimination, and other benefits and welfare and compliance with relevant laws and regulations that have a significant impact on the issuer.	●	P42	
B1.1	Total workforce by gender, employment type, age group and geographical region.	●	P42	
B1.2	Employee turnover rate by gender, age group and geographical region.	●	P64	
General disclosure	Policies relating to providing a safe working environment and protecting employees from occupational hazards and compliance with relevant laws and regulations that have a significant impact on the issuer.	●	P44	
B2.1	Number and rate of work-related fatalities.	●	P44	
B2.2	Lost days due to work injury.	●	P44	

CONTENT INDEX OF THE ENVIRONMENTAL, SOCIAL AND GOVERNANCE REPORTING GUIDE

Aspect	Key performance indicators	Disclosure	Disclosure In page	Note
B2.3	Description of occupational health and safety measures adopted, how they are implemented and monitored.	●	P44	
General disclosure	Policies on improving employees' knowledge and skills for discharging duties at work. Description of training activities.	●	P46	
B3.1	The percentage of employees trained by gender and employee category (e.g. senior management, middle management).	●	P65	
B3.2	The average training hours completed per employee by gender and employee category.	●	P65	
General disclosure	Policies relating to preventing child and forced labour and compliance with relevant laws and regulations that have a significant impact on the issuer.	●	P43	
B4.1	Description of measures to review employment practices to avoid child and forced labour.	●	P43	
B4.2	Description of steps taken to eliminate such practices when discovered.	●	N/A	During the reporting period, no significant risks of child labour and forced labour were found in the Company's business.
Operating practices				
General disclosure	Policies on managing environmental and social risks of the supply chain.	●	P38	
B5.1	Number of suppliers by geographical region.	●	P39	
B5.2	Description of practices relating to engaging suppliers, number of suppliers where the practices are being implemented, how they are implemented and monitored.	●	P38	
General disclosure	Policies relating to health and safety, advertising, labelling and privacy matters relating to products and services provided and methods of redress and compliance with relevant laws and regulations that have a significant impact on the issuer.	●	P30-35	

Aspect	Key performance indicators	Disclosure	Disclosure In page	Note
B6.1	Percentage of total products sold or shipped subject to recalls for safety and health reasons.	N/A	N/A	Yuexiu Transport did not sell or ship products to road-users, so this KPI was not applicable.
B6.2	Number of products and service related complaints received and how they are dealt with.	●	P34	
B6.3	Description of practices relating to observing and protecting intellectual property rights.	N/A	N/A	Since the Company's business is less involved in areas such as intellectual property, we do not have the usual practice of maintaining and safeguarding intellectual property
B6.4	Description of quality assurance process and recall procedures.	●	P30	
B6.5	Description of consumer data protection and privacy policies, how they are implemented and monitored.	●	P35	
General disclosure	Policies relating to bribery, extortion, fraud and money laundering and compliance with relevant laws and regulations that have a significant impact on the issuer.	●	P19	
B7.1	Number of concluded legal cases regarding corrupt practices brought against the issuer or its employees during the reporting period and the outcomes of the cases.	●	P19	
B7.2	Description of preventive measures and whistle-blowing procedures, how they are implemented and monitored.	●	P19	

Aspect	Key performance indicators	Disclosure	Disclosure In page	Note
Community				
General disclosure	Policies on community engagement to understand the needs of the communities where the issuer operates and to ensure its activities take into consideration the communities' interests.	●	P55	
B8.1	Focus areas of contribution (e.g. education, environmental concerns, labour needs, health, culture, sport).	●	P56	
B8.2	Resources contributed (e.g. money or time) to the focus area.	●	P56	

Note: ● means already disclosed in the report; ◐ means not completely disclosed; ○ means not disclosed; N/A means this indicator does not apply to the Company.

FEEDBACK

Dear reader:

Thank you for reading this report! As this is our second Environmental, Social and Governance (ESG) Report, so we do wish you can make a comment on this report and present your valuable advice to help us make continuous improvements to the report.

Email address _____

Tel. _____

Fax _____

Company address _____

Feedback on 2017 Environmental, Social and Governance Report of Yuexiu Transport Infrastructure Limited

Name _____

Work unit _____

Post _____

Contact No. _____

Email _____

Your comment: (Please tick as appropriate)

	Very good	Fairly good	General	Fairly poor	Very poor
Do you think this report highlights the important information of the Company in respect of the environment, society and governance?	<input type="checkbox"/>	<input type="checkbox"/>	<input type="checkbox"/>	<input type="checkbox"/>	<input type="checkbox"/>
Do you think the information and indicators disclosed in this report are clear, accurate and complete?	<input type="checkbox"/>	<input type="checkbox"/>	<input type="checkbox"/>	<input type="checkbox"/>	<input type="checkbox"/>
Do you think the arrangement of content and style design of this report are reader-friendly?	<input type="checkbox"/>	<input type="checkbox"/>	<input type="checkbox"/>	<input type="checkbox"/>	<input type="checkbox"/>

Which part are you most interested in?

What other information that you need to know about is not reflected in this report?

What advice do you have for our future release of environmental, social and governance reports?