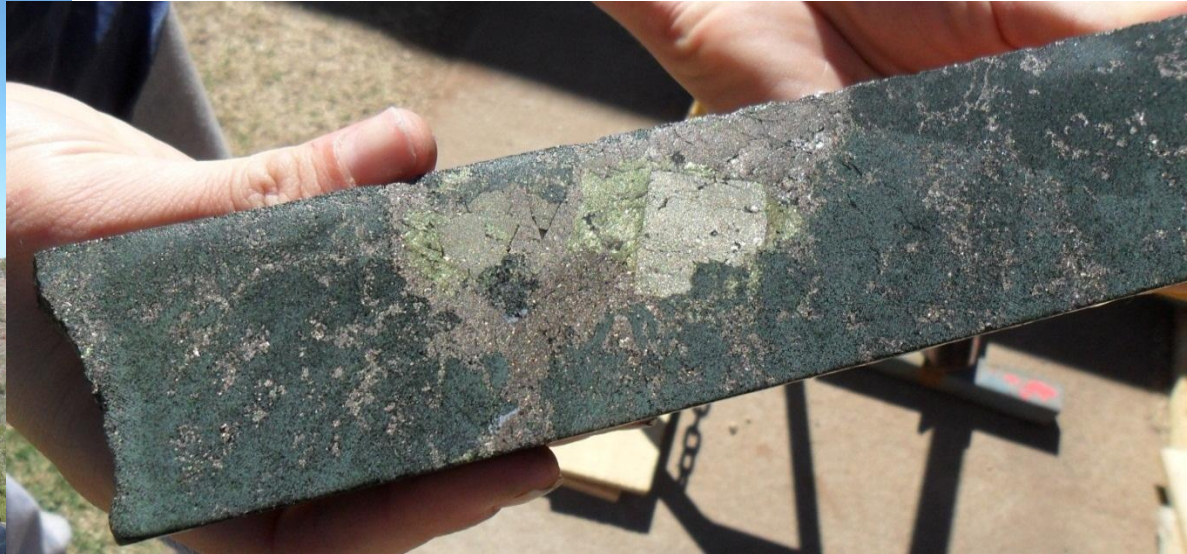


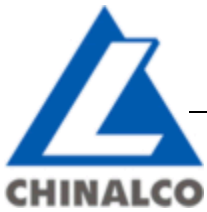
Chinalco Yunnan Copper Resources Ltd



The Elaine Copper Discovery
A New Copper Discovery in Queensland

ASX : CYU

15th July 2011



Investor Presentation

GOLDSEARCH

Cautionary Note and Competent Persons Statement

Cautionary Note

Whilst this document and presentation is based on information from sources which are considered reliable, Chinalco Yunnan Copper Resources Ltd (“**Chinalco Yunnan**”), its employees and consultants do not represent, warrant nor guarantee, by expression nor implication, that the information in this document and presentation is complete or accurate. To the maximum extent permitted by law, Chinalco Yunnan disclaims any responsibility to inform any recipient of this document and presentation of any matter that subsequently comes to its notice, which may affect any of the information contained in this document and presentation.

The information in this report that relates to the Inferred Resource for the Elaine Project is based on information compiled by Jason Beckton, who is a Member of the Australain Institute of Geoscientists and is Managing Director of Chinalco Yunnan Copper Resources Ltd. Mr Beckton has sufficient experience relevant to the style of mineralisation and type of deposit under consideration and to the activity he is undertaking to qualify as a Competent Person as defined in the 2004 Edition of the "Australasian Code for Reporting of Exploration Results and Mineral Resources". Mr Beckton consents to the inclusion in the report of the matters based on his information in the form and context in which it appears.

Competent Persons Statement

The information in this report that relates to Exploration Results for Mount Dorothy is based on information compiled by Richard Hatcher, who is a Member of the Australian Institute of Geologists, and is the Exploration Manager of Chinalco Yunnan Copper Resources Ltd. Mr Hatcher has sufficient experience relevant to the styles of mineralisation and type of deposits under consideration and to the activity he is undertaking to qualify as a Competent Person as defined in the 2004 Edition of the "Australasian Code for Reporting of Exploration Results and Mineral Resources". Mr Hatcher consents to the inclusion in the report of the matters based on his information in the form and context in which it appears.

APEC Presence

CYU is exploring projects for Copper REE in Australia, Chile and Laos.



Summary

Price A\$0.26
ASX Code CYU
Shares issued 156M
Options 15.5M
Market Cap A\$40M
Cash A\$12M



Chinalco Yunnan Copper Resources Ltd (“CYU”) have a copper sulphide & associated metal focus in the APEC Region.

- Top 20 shareholders hold 66% of CYU
- Yunnan Copper Industry Group – 21.2%
- Approx 1,000 shareholders

Elaine - ASX Release 14th July – New Copper Discovery

346.9m @ 0.50% Cu equivalent* (0.28 % Cu and 220ppm Co) from 263m depth MKED007.

122.9m @ 0.87 % Cu equivalent*(0.56% Cu, 317ppm Co), MKED007 from 487m depth.

Hole finished in copper sulphide mineralisation - open and increasing grade at depth. Elaine Copper Sulphide has unknown width. MKED008 to be reported.

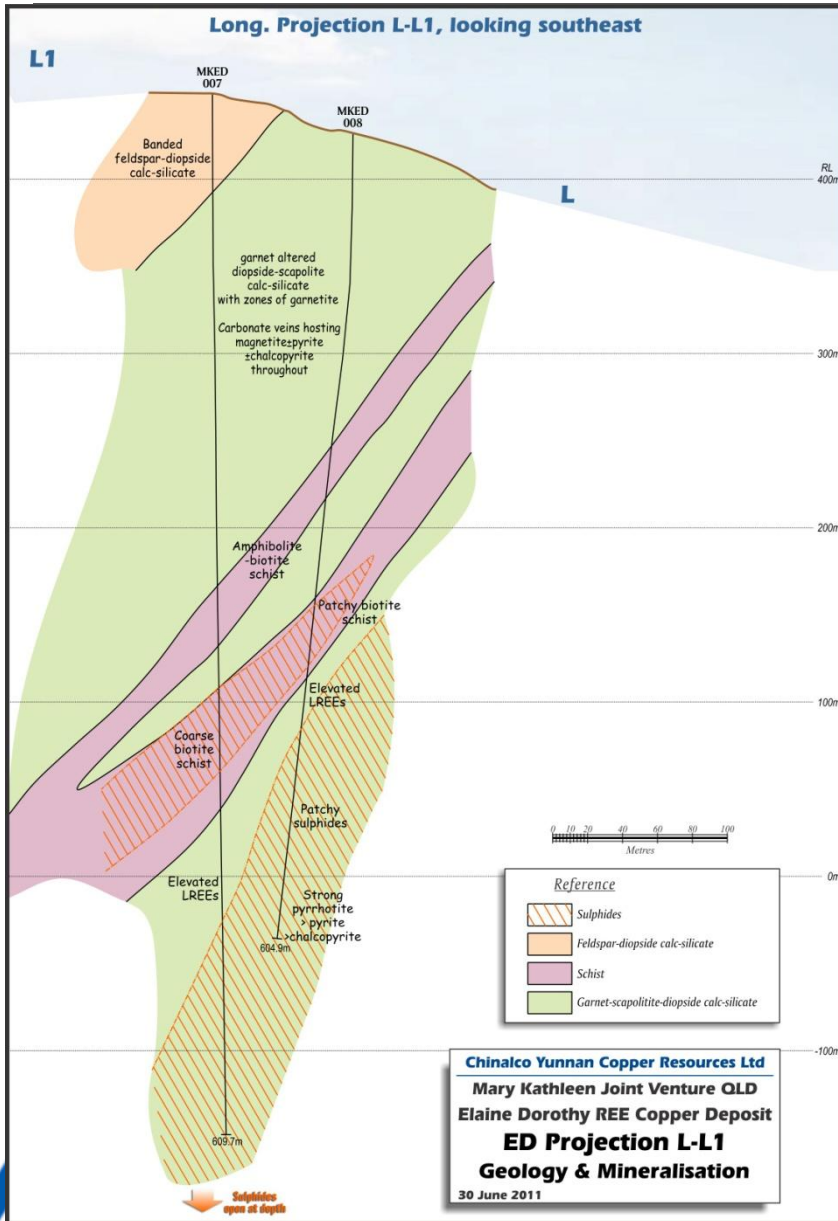
CYU (70%) Mary Kathleen JV with Goldsearch Limited (30%)

*Copper equivalent calculation represents the total metal value for each metal , multiplied by the conversion factor, summed and expressed in equivalent copper percentage. These results are exploration results only and no allowance is made from recovery losses that may occur should mining eventually result. However it is the company's opinion that elements considered here have a reasonable potential to be recovered. Prices and conversion factors are summarized below;

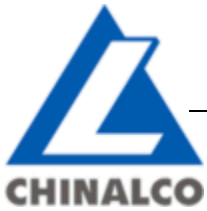
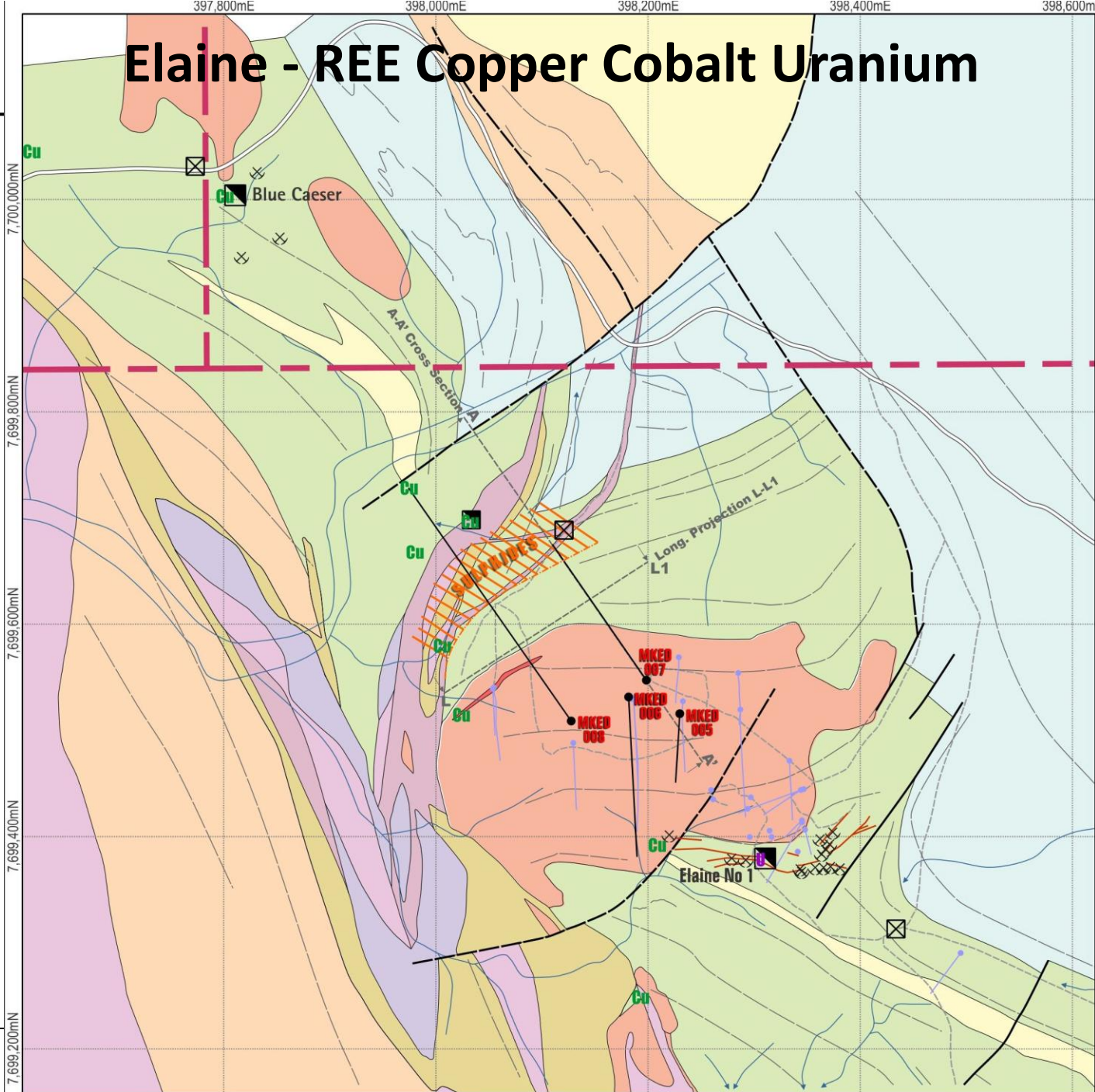
Copper Equivalent Formula = Cu % +Co (ppm) x 0.0008*
Price Assumptions – Cu (US\$1.60/lb), Co (US\$16/lb)

*Conversion Factor 0008 = (Co 16/Cu 1.60)/10000 in order to convert ppm Cobalt to % Cobalt.

Elaine – MKED007 - 346 metres 0.50% CuEq* – ASX 14th July

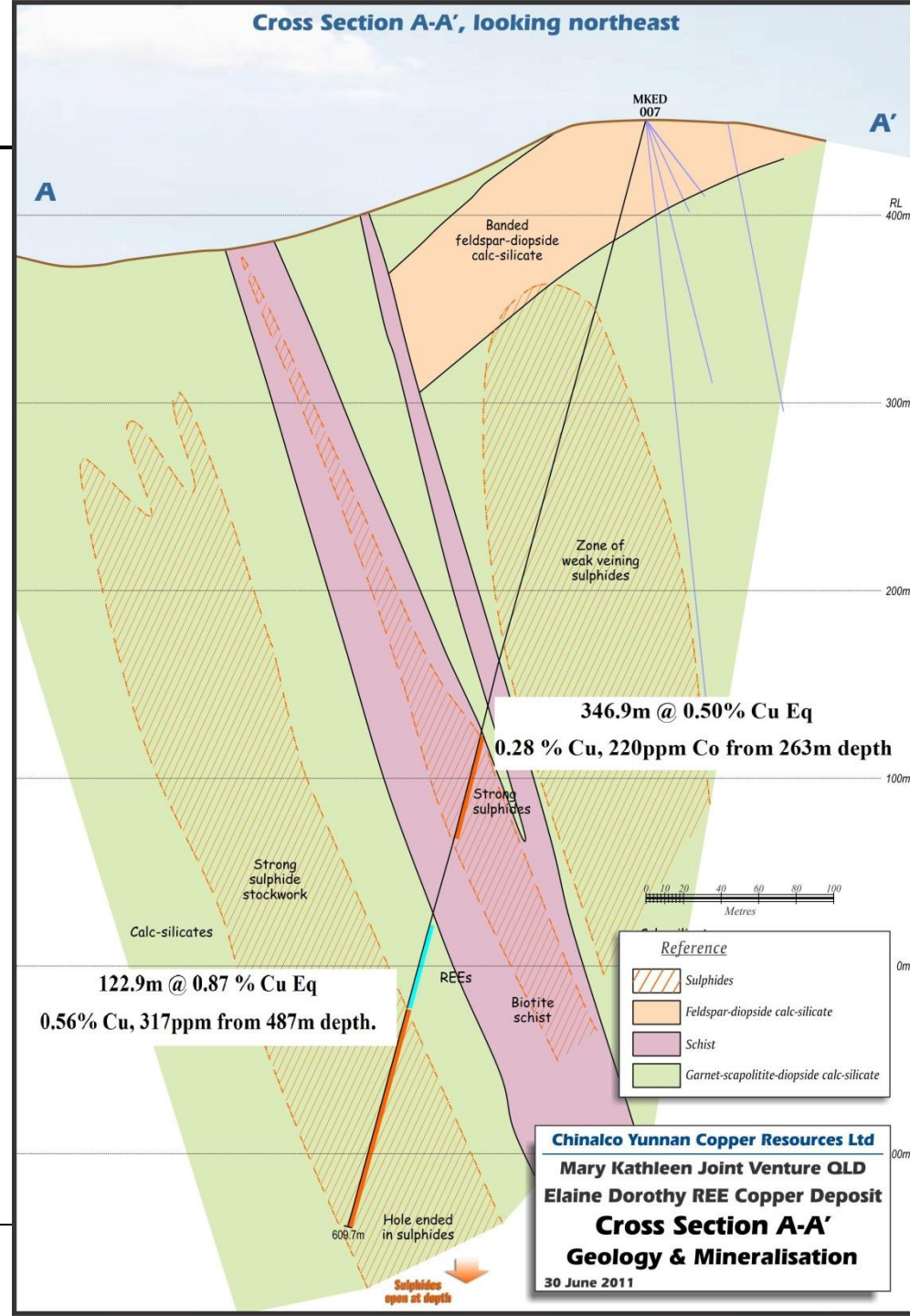
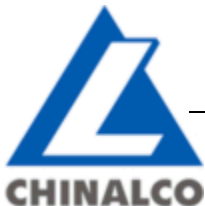


Elaine - REE Copper Cobalt Uranium

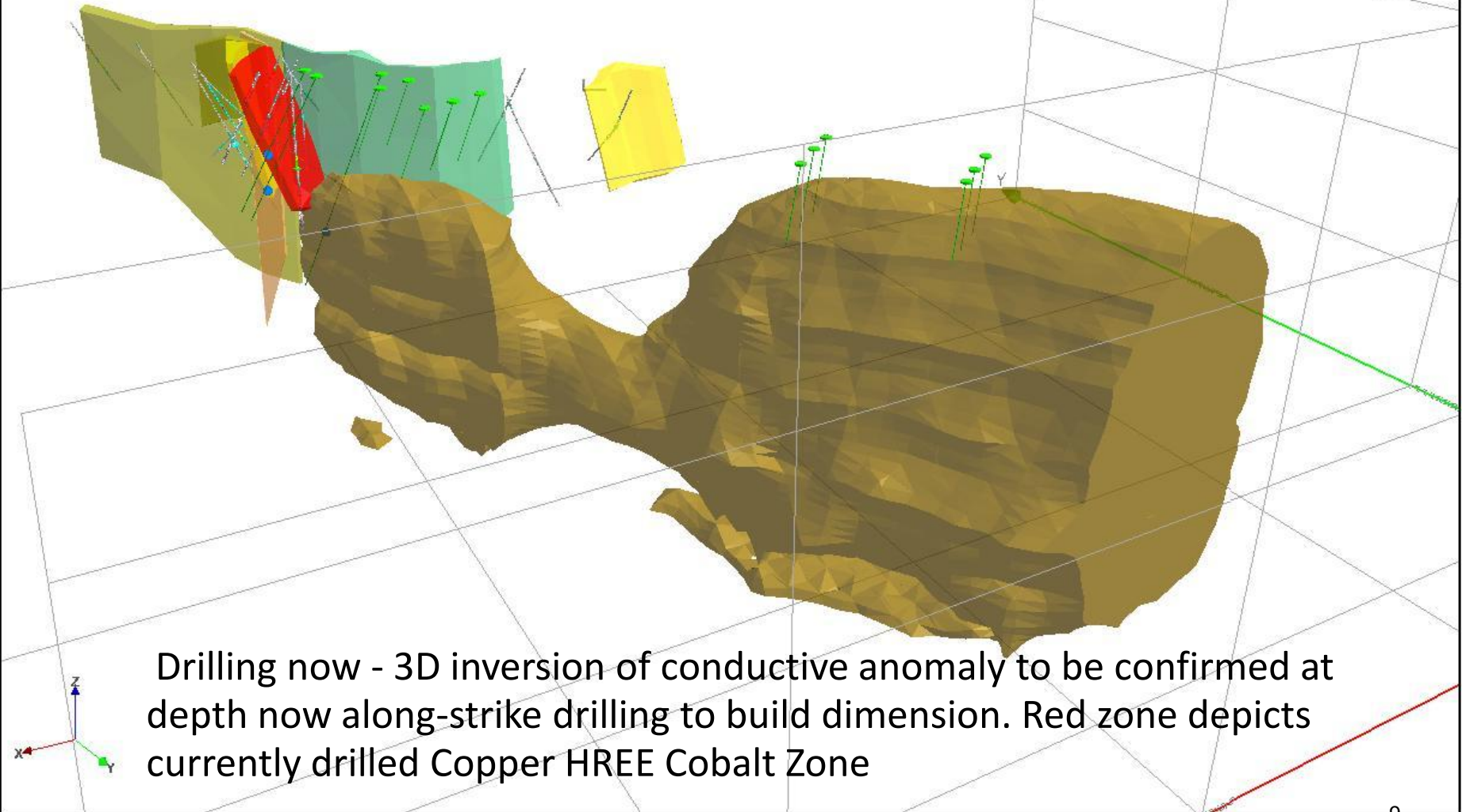


Elaine - Copper REE Cobalt Uranium Discovery

- Blind sulphide zone with now two intercepts open at depth. Unknown width.
- Corporate Target 100 to 500Mt @ 0.5 to 1.0% Copper ie Mt Dore or Mt Elliott of Ivanhoe.
- Extensional drilling in late July.



Mt Dorothy Copper HREE Cobalt Discovery



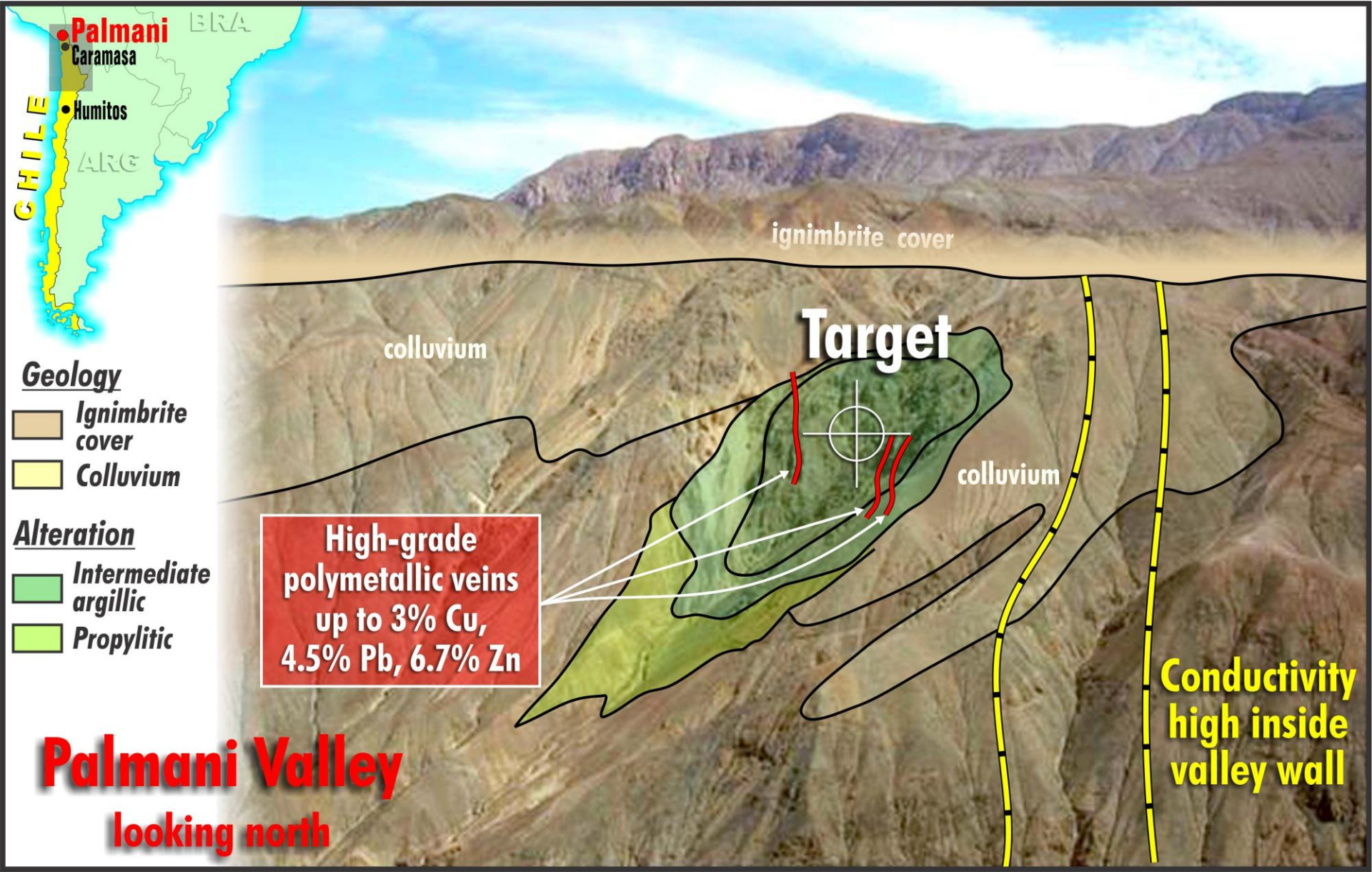
Projects - Chile

Chile - Porphyry Copper Exploration

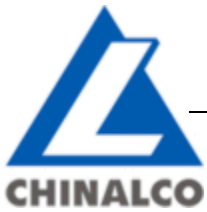
- CYU Farming into Caramasa and Palmani Rio Tinto properties.
- Humito 100% CYU owned.
- Mega Scale Greenfields Porphyry Copper Exploration



Projects – Chile – Rio Tinto Northern Copper JV



Projects – Chile



Drilling now planned for September on Rio Tinto JV

Projects - Laos

Laos – Shallow Copper Silver Resources

- Average Grades of silver 120 ppm or four ounces, average copper 1%.
- Zambian Style sediment hosted Copper Silver deposits.
- Target 100Mt @ 1% copper and 120g/t silver
- JORC Resource drillouts in 2011.



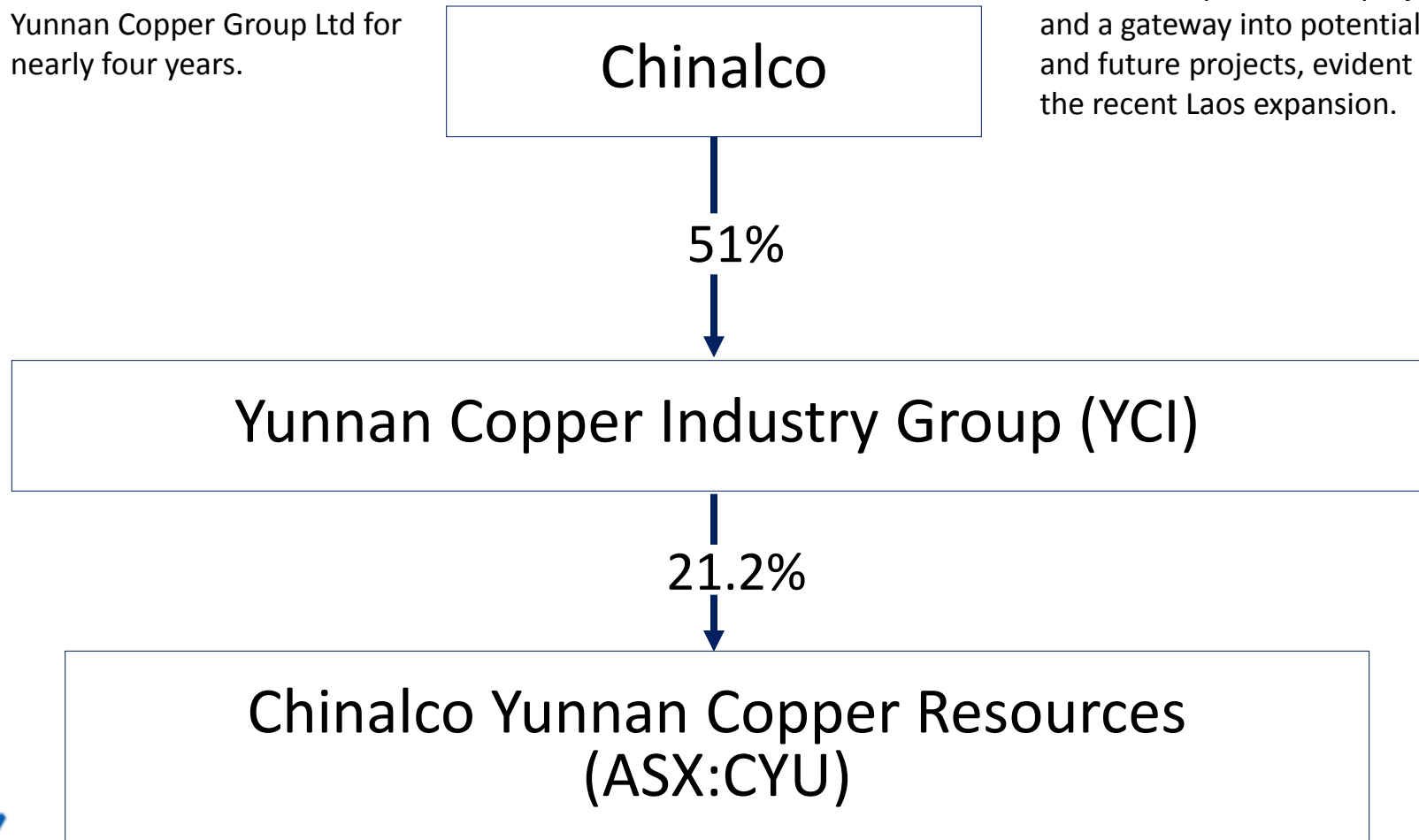
Projects - Laos



Summary – Cornerstone Investor

CYU has maintained a partnership with its largest shareholders, Chinalco Yunnan Copper Group Ltd for nearly four years.

Relationship with Chinalco is a key feature in providing economically beneficial projects and a gateway into potential and future projects, evident in the recent Laos expansion.



Board of Directors/Management

Mr Norman Zillman	Non-Exec Co-Chairman (ex Queensland Gas, Great Artesian Oil and Gas, Queensland Government) – Brisbane.	
Mr Zhihua Yao	Non-Exec Co-Chairman (Deputy General Manager of YCI, over 28 years mining and exploration experience in China)- Kunming.	
Mr Jason Beckton	Managing Director (ex Pancontinental, Gold Fields, Gympie Gold, Bolnisi Mexico NL, Exeter Resource Corp Chile) – Santiago.	
Mr Zewen Yang	Executive Director (Yunnan Copper, Economics Executive) – Sydney.	
Mr Richard Hatcher	Exploration Manager (ex Bolnisi Queensland, Kings Minerals – Mexico) – Brisbane.	
Mr James Cran	Chief Geologist (ex Newmont, Gympie Gold and Eastern Mediterranean Resources – Cyprus and Slovakia) – Brisbane.	
Mr Matthew Price	Geologist, University of London, CYU geologist for two years in Australia and Chile.	

Thankyou – CYU:ASX

