

Major  
Partnerships  
for  
Major  
Discoveries



QUEENSLAND – CHILE – LAOS



CHINALCO YUNNAN COPPER RESOURCES





# Cautionary Note & Competent Persons Statement

## CAUTIONARY NOTE

Whilst this document and presentation is based on information from sources which are considered reliable, Chinalco Yunnan Copper Resources Ltd (“**Chinalco Yunnan**”), its employees and consultants do not represent, warrant nor guarantee, by expression nor implication, that the information in this document and presentation is complete or accurate. To the maximum extent permitted by law, Chinalco Yunnan disclaims any responsibility to inform any recipient of this document and presentation of any matter that subsequently comes to its notice, which may affect any of the information contained in this document and presentation.

## COMPETENT PERSONS STATEMENT

The information in this report that relates to the Inferred Resource for Elaine 1 and to Exploration Results for all other prospects is based on information compiled by Jason Beckton, who is a Member of the Australian Institute of Geologists, and is the Managing Director of Chinalco Yunnan Copper Resources Ltd. Mr. Beckton has sufficient experience relevant to the styles of mineralisation and type of deposits under consideration and to the activity he is undertaking to qualify as a Competent Person as defined in the 2004 Edition of the "Australasian Code for Reporting of Exploration Results and Mineral Resources". Mr. Beckton consents to the inclusion in the report of the matters based on his information in the form and context in which it appears.

\*Copper Equivalent calculation for Elaine 1 Resource is based on  $\%CuEQ = \%Cu + (g\ Au/t \times 0.70216)$



# Chinalco Yunnan Copper Resources

## CYU:ASX

- Discovery of Copper Gold REE JORC Resource in Queensland
- Exploring world's best copper ground in Chile
- Advanced project drilling, Laos
- Drilling known targets – not greenfields
- Strong support from strategic shareholders, Chinalco & Yunnan Copper
- Rio Tinto JV seeking major resources at Candelabro, Caramasa & Palmani (Chile)

# Target Element Copper



hydrogen 1 <b>H</b> 1.0079																	helium 2 <b>He</b> 4.0026
lithium 3 <b>Li</b> 6.941	beryllium 4 <b>Be</b> 9.0122																
sodium 11 <b>Na</b> 22.990	magnesium 12 <b>Mg</b> 24.305																
potassium 19 <b>K</b> 39.098	calcium 20 <b>Ca</b> 40.078	scandium 21 <b>Sc</b> 44.956	titanium 22 <b>Ti</b> 47.867	vanadium 23 <b>V</b> 50.942	chromium 24 <b>Cr</b> 51.996	manganese 25 <b>Mn</b> 54.938	iron 26 <b>Fe</b> 55.845	cobalt 27 <b>Co</b> 58.933	nickel 28 <b>Ni</b> 58.693	copper 29 <b>Cu</b> 63.546	zinc 30 <b>Zn</b> 65.39	gallium 31 <b>Ga</b> 69.723	germanium 32 <b>Ge</b> 72.61	arsenic 33 <b>As</b> 74.922	selecnium 34 <b>Se</b> 78.96	bromine 35 <b>Br</b> 79.904	krypton 36 <b>Kr</b> 83.80
rubidium 37 <b>Rb</b> 85.468	strontium 38 <b>Sr</b> 87.62	yttrium 39 <b>Y</b> 88.906	zirconium 40 <b>Zr</b> 91.224	niobium 41 <b>Nb</b> 92.906	molybdenum 42 <b>Mo</b> 95.94	technetium 43 <b>Tc</b> [98]	ruthenium 44 <b>Ru</b> 101.07	rhodium 45 <b>Rh</b> 102.91	palladium 46 <b>Pd</b> 106.42	silver 47 <b>Ag</b> 107.8682	cadmium 48 <b>Cd</b> 112.41	indium 49 <b>In</b> 114.82	tin 50 <b>Sn</b> 118.71	antimony 51 <b>Sb</b> 121.757	tellurium 52 <b>Te</b> 127.60	iodine 53 <b>I</b> 126.90	xenon 54 <b>Xe</b> 131.29
cesium 55 <b>Cs</b> 132.91	barium 56 <b>Ba</b> 137.33	* 57-70	lanthanum 71 <b>Lu</b> 174.97	hafnium 72 <b>Hf</b> 178.49	tantalum 73 <b>Ta</b> 180.95	tungsten 74 <b>W</b> 183.84	rhenium 75 <b>Re</b> 186.21	osmium 76 <b>Os</b> 190.23	iridium 77 <b>Ir</b> 192.22	platinum 78 <b>Pt</b> 195.08	mercury 80 <b>Hg</b> 200.59	thallium 81 <b>Tl</b> 204.38	lead 82 <b>Pb</b> 207.2	bismuth 83 <b>Bi</b> 208.98	polonium 84 <b>Po</b> [209]	astatine 85 <b>At</b> [210]	radon 86 <b>Rn</b> [222]
francium 87 <b>Fr</b> [223]	radium 88 <b>Ra</b> [226]	** 89-102	actinium 103 <b>Lr</b> [227]	rutherfordium 104 <b>Rf</b> [261]	dubnium 105 <b>Db</b> [262]	seaborgium 106 <b>Sg</b> [266]	bohrium 107 <b>Bh</b> [264]	hassium 108 <b>Hs</b> [277]	meitnerium 109 <b>Mt</b> [276]	unnilium 110 <b>Uun</b> [271]	ununium 111 <b>Uuu</b> [272]	unbibium 112 <b>Uub</b> [277]					

\* Lanthanide series

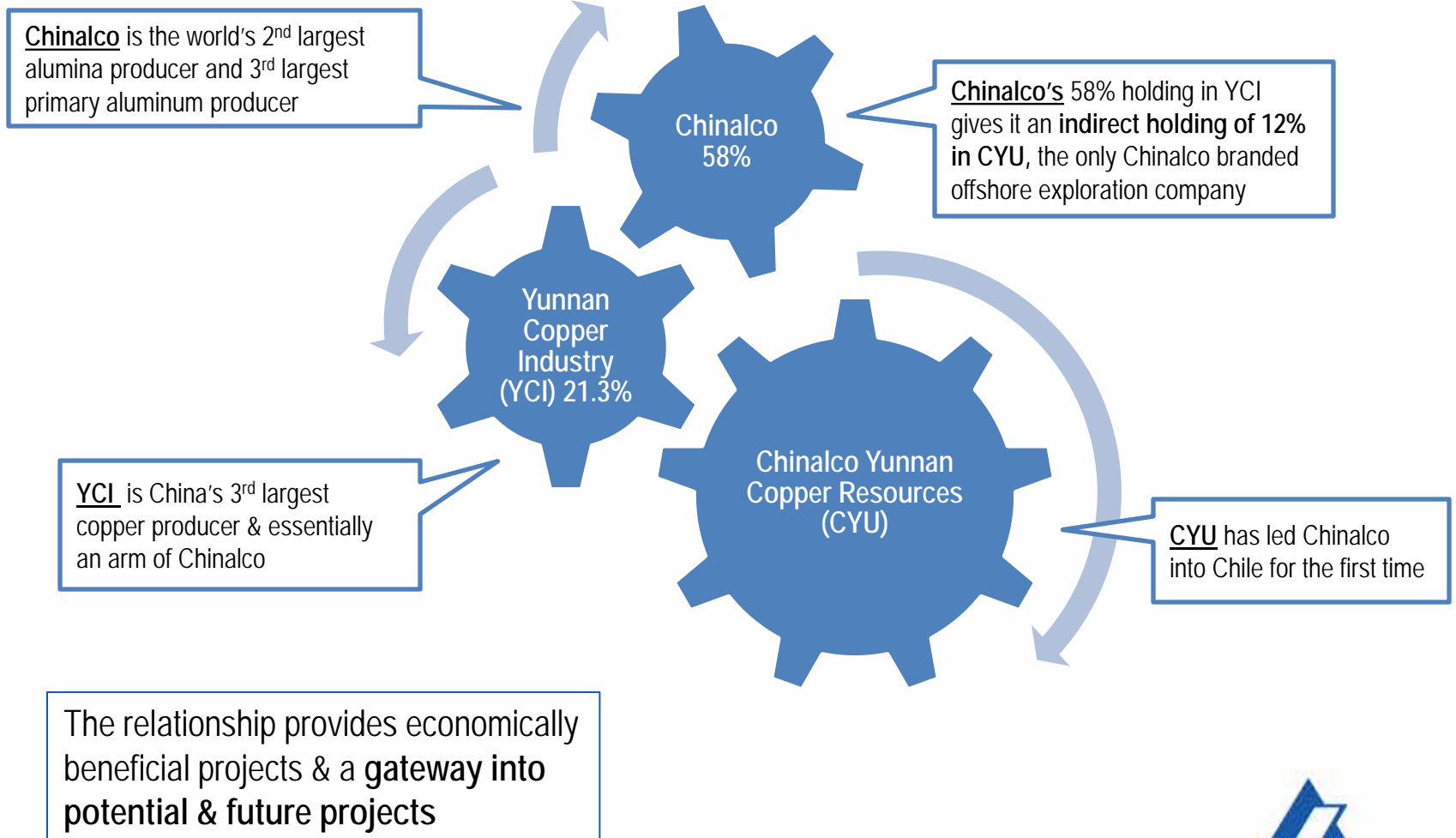
lanthanum 57 <b>La</b> 138.905	cerium 58 <b>Ce</b> 140.12	praseodymium 59 <b>Pr</b> 140.908	neodymium 60 <b>Nd</b> 144.24	promethium 61 <b>Pm</b> [145]	samarium 62 <b>Sm</b> 150.36	europium 63 <b>Eu</b> 151.96	gadolinium 64 <b>Gd</b> 157.25	terbium 65 <b>Tb</b> 158.93	dysprosium 66 <b>Dy</b> 162.50	holmium 67 <b>Ho</b> 164.93	erbium 68 <b>Er</b> 167.26	thulium 69 <b>Tm</b> 168.93	ytterbium 70 <b>Yb</b> 173.04
---	-------------------------------------	--	--	--	---------------------------------------	---------------------------------------	---	--------------------------------------	---	--------------------------------------	-------------------------------------	--------------------------------------	--

\*\* Actinide series

actinium 89 <b>Ac</b> [227]	thorium 90 <b>Th</b> 232.04	protactinium 91 <b>Pa</b> 231.04	uranium 92 <b>U</b> 238.03	neptunium 93 <b>Np</b> [237]	plutonium 94 <b>Pu</b> [244]	americium 95 <b>Am</b> [243]	curium 96 <b>Cm</b> [247]	berkelium 97 <b>Bk</b> [247]	californium 98 <b>Cf</b> [251]	einsteinium 99 <b>Es</b> [252]	fermium 100 <b>Fm</b> [257]	mendelevium 101 <b>Md</b> [258]	nobelium 102 <b>No</b> [259]
--------------------------------------	--------------------------------------	---	-------------------------------------	---------------------------------------	---------------------------------------	---------------------------------------	------------------------------------	---------------------------------------	---	---	--------------------------------------	--	---------------------------------------

Associated elements also defined in CYU prospects?

# Exceptional Partner: Chinalco





## Exceptional Partner: Rio Tinto

- JVs with Rio Tinto at three different Chilean sites in premium mining territories
- Candelabro – 2500m drilling program recently completed. Potential for large copper, molybdenum & gold deposit. Neighbours BHP Cerro Colorado mine
- Caramasa – seeking major multi-porphyry system to yield up to 0.5-1b tonnes of 0.5-0.8% copper
- Palmani – preparations being made for drilling the 1x3km target in coming months

# Project Diversity

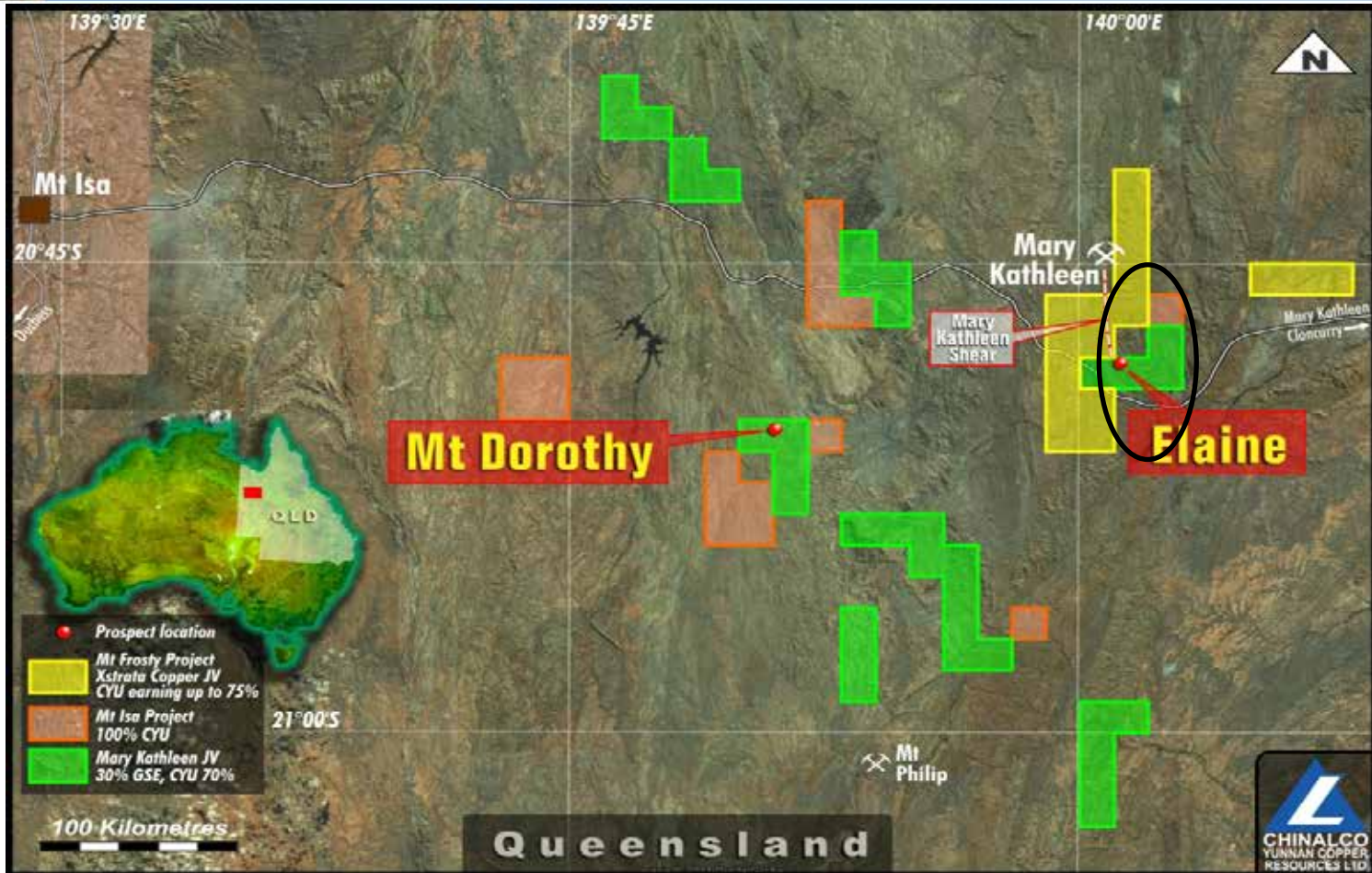


**Copper Silver – Laos:**  
Chinalco managed, drilling currently, near term cashflow

**Copper – Queensland:**  
managing Elaine drill out & further discoveries

**Copper – Chile:** major porphyry systems being drilled

# Queensland – Projects & Possibilities

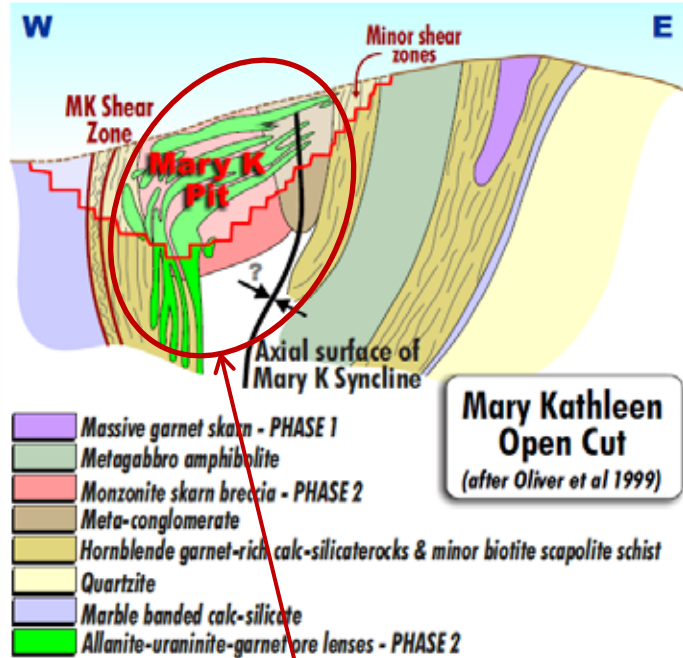


Elaine to Mary Kathleen – 8 km of untested strike of probable skarn replacement mineralisation

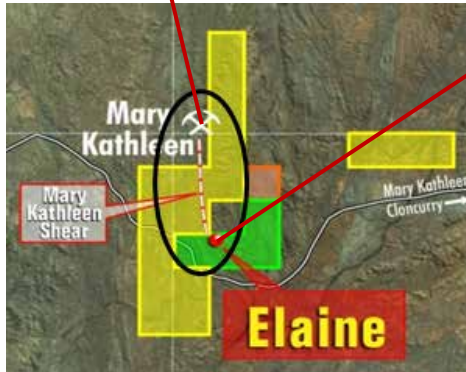
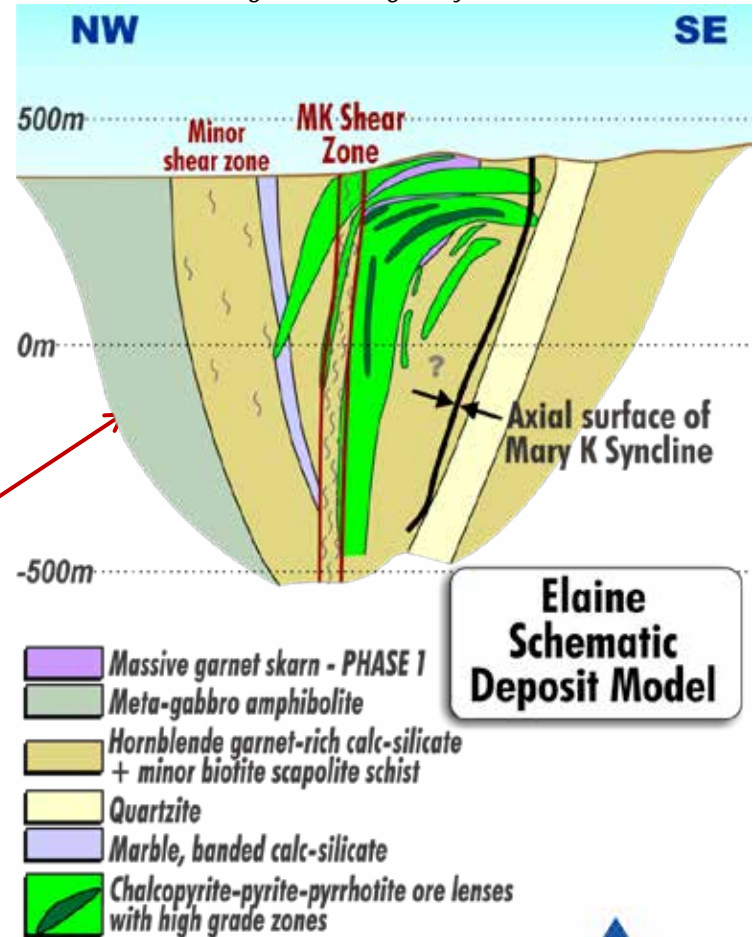


# Queensland – Elaine 1 Copper Resource Discovery – 26Mt @ 0.62% Cu Equivalent\*

Mary Kathleen, looking north along Mary Kathleen Shear.



Elaine 1, looking north along Mary Kathleen Shear.



QLD - CURRENTLY 150,000t, TARGETING 1,000,000t FINE CU



CHINALCO YUNNAN COPPER RESOURCES

6km untested shear between Mary Kathleen and Elaine is possible host to multiple deposits

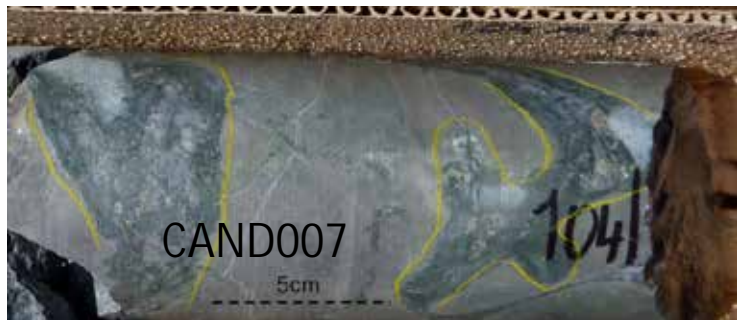
# Chile: CYU in the Porphyry Copper Belt

- 2500m diamond drill program is **completed** at **Candelabro**. Visual copper over 125m, assays pending, potential major porphyry system
- Adjacent to Peruvian border. Major structures run into Peru & billion tonne systems. Chile better jurisdiction
- Caramasa – RIO JV seeking major multi-porphyry systems. Major system targeting major resources
- Exceptional large size targets only possible in this region with major partners. CYU shareholders currently have 4 of these major projects

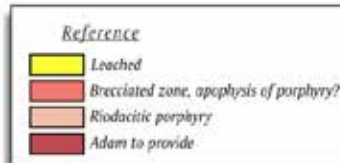
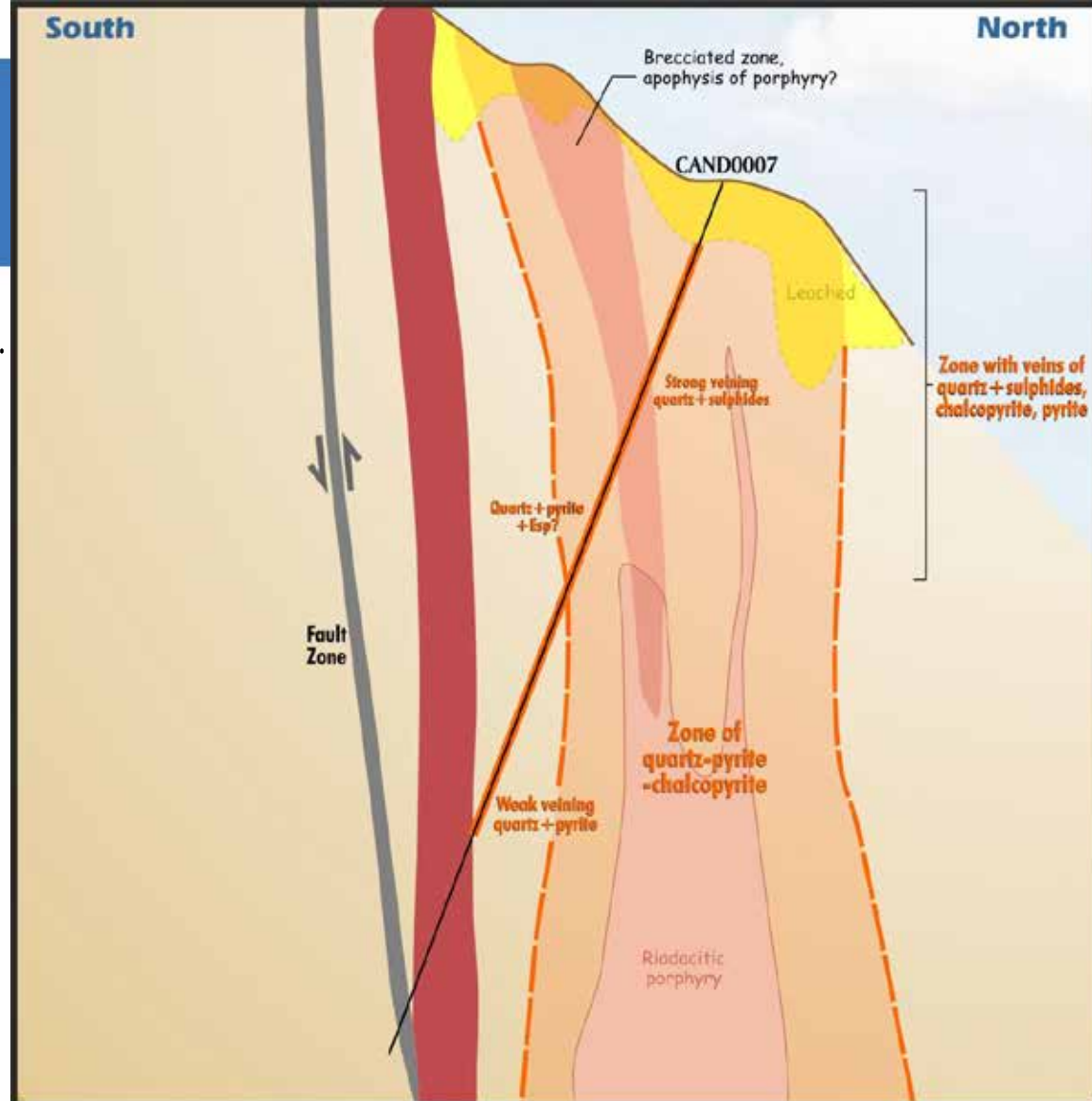


# Chile

- Largest copper mines in the world.
- Dominated by the world's top copper companies. Few juniors in porphyry belt
- Opportunity for major discovery: from Candelabro awaiting assays on major visual intersection CAND007 with Rio Tinto JV



Chalcopyrite mineralisation



Chinalco Yunnan Copper Resources Ltd

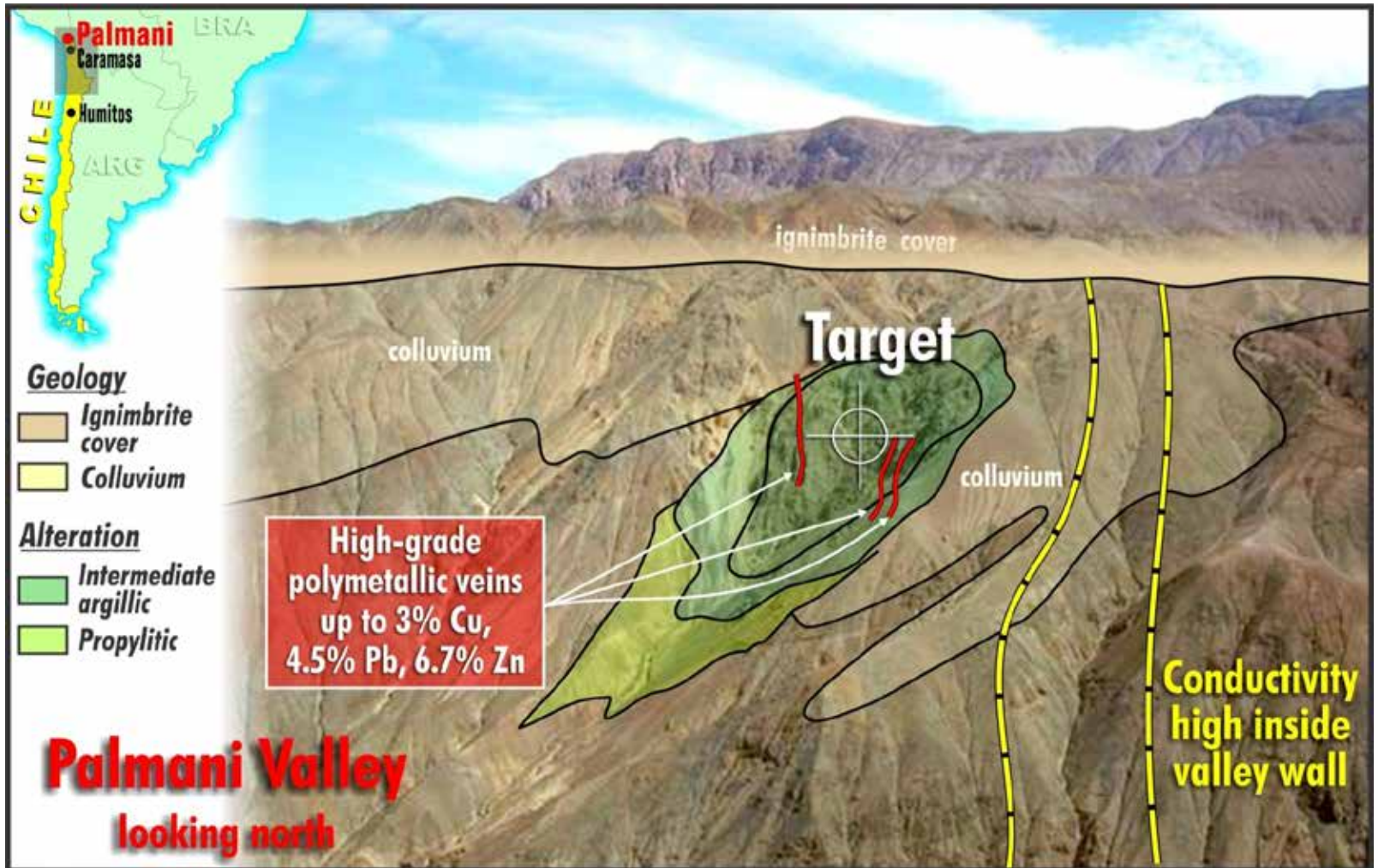
Rio Tinto-CYU JV, Chile  
Candelabro Project

**Cross Section CAND0007  
Geology & Mineralisation**

17 July 2012

Adam Wilson

# Caramasa and Palmani Porphyries Next to be Drilled



# Corporate structure

Share price (18/7/12)	11.5 cents
52-week range	10-27 cents
Market cap	~\$20m
Shares outstanding	~173m
Cash (31/3/12)	\$5.56m





# Chinalco Yunnan Copper Resources CYU:ASX

- ✓ Discovery of Copper Gold REE JORC Resource in Queensland
- ✓ Exploring world's best copper ground in Chile
- ✓ Advanced project drilling, Laos
- ✓ Drilling known targets – not greenfields
- ✓ Strong support from strategic shareholders, Chinalco & Yunnan Copper
- ✓ Rio Tinto JV seeking major resources at Candelabro, Caramasa & Palmani (Chile)

[www.cycal.com.au](http://www.cycal.com.au)