

Major
Partnerships
for
Major
Discoveries



QUEENSLAND – CHILE – LAOS



CHINALCO YUNNAN COPPER RESOURCES





Cautionary Note & Competent Persons Statement

CAUTIONARY NOTE

Whilst this document and presentation is based on information from sources which are considered reliable, Chinalco Yunnan Copper Resources Ltd (“**Chinalco Yunnan**”), its employees and consultants do not represent, warrant nor guarantee, by expression nor implication, that the information in this document and presentation is complete or accurate. To the maximum extent permitted by law, Chinalco Yunnan disclaims any responsibility to inform any recipient of this document and presentation of any matter that subsequently comes to its notice, which may affect any of the information contained in this document and presentation.

COMPETENT PERSONS STATEMENT

The information in this report that relates to Exploration Results for all prospects and to the Inferred Resource for Elaine 1 is based on information compiled by Jason Beckton, who is a Member of the Australian Institute of Geologists, and is the Exploration Manager of Chinalco Yunnan Copper Resources Ltd. Mr Beckton has sufficient experience relevant to the styles of mineralisation and type of deposits under consideration and to the activity he is undertaking to qualify as a Competent Person as defined in the 2004 Edition of the "Australasian Code for Reporting of Exploration Results and Mineral Resources". Mr Beckton consents to the inclusion in the report of the matters based on his information in the form and context in which it appears.

*Copper Equivalent calculation for Elaine 1 Resource is based on $\%CuEQ = \%Cu + (g\ Au/t \times 0.70216)$



Discovery of Copper REE in Queensland



Exploring worlds best copper ground in Chile



Advanced Project drilling, Laos



Drilling known targets – not greenfields



***Strong support from strategic shareholders,
Chinalco & Yunnan Copper***

Target Element Copper



hydrogen 1 H 1.0079																	helium 2 He 4.0026
lithium 3 Li 6.941	beryllium 4 Be 9.0122																
sodium 11 Na 22.990	magnesium 12 Mg 24.305																
potassium 19 K 39.098	calcium 20 Ca 40.078	scandium 21 Sc 44.956	titanium 22 Ti 47.867	vanadium 23 V 50.942	chromium 24 Cr 51.996	manganese 25 Mn 54.938	iron 26 Fe 55.845	cobalt 27 Co 58.933	nickel 28 Ni 58.693	copper 29 Cu 63.546	zinc 30 Zn 65.39	gallium 31 Ga 69.723	germanium 32 Ge 72.61	arsenic 33 As 74.922	selecnium 34 Se 78.96	bromine 35 Br 79.904	krypton 36 Kr 83.80
rubidium 37 Rb 85.468	strontium 38 Sr 87.62	yttrium 39 Y 88.906	zirconium 40 Zr 91.224	niobium 41 Nb 92.906	molybdenum 42 Mo 95.94	technetium 43 Tc [98]	ruthenium 44 Ru 101.07	rhodium 45 Rh 102.91	palladium 46 Pd 106.42	silver 47 Ag 107.8682	cadmium 48 Cd 112.41	indium 49 In 114.82	tin 50 Sn 118.71	antimony 51 Sb 121.76	tellurium 52 Te 127.60	iodine 53 I 126.90	xenon 54 Xe 131.29
cesium 55 Cs 132.91	barium 56 Ba 137.33	* 57-70	lanthanum 71 Lu 174.97	hafnium 72 Hf 178.49	tantalum 73 Ta 180.95	tungsten 74 W 183.84	rhenium 75 Re 186.21	osmium 76 Os 190.23	iridium 77 Ir 192.22	platinum 78 Pt 195.08	mercury 80 Hg 200.59	thallium 81 Tl 204.38	lead 82 Pb 207.2	bismuth 83 Bi 208.98	polonium 84 Po [209]	astatine 85 At [210]	radon 86 Rn [222]
francium 87 Fr [223]	radium 88 Ra [226]	** 89-102	actinium 103 Lr [227]	rutherfordium 104 Rf [261]	dubnium 105 Db [262]	seaborgium 106 Sg [266]	bohrium 107 Bh [264]	hassium 108 Hs [277]	meitnerium 109 Mt [276]	unnilium 110 Uun [271]	ununium 111 Uuu [272]	unbibium 112 Uub [277]					

* Lanthanide series

** Actinide series

lanthanum 57 La 138.905	cerium 58 Ce 140.12	praseodymium 59 Pr 140.908	neodymium 60 Nd 144.24	promethium 61 Pm [145]	samarium 62 Sm 150.36	europium 63 Eu 151.96	gadolinium 64 Gd 157.25	terbium 65 Tb 158.93	dysprosium 66 Dy 162.50	holmium 67 Ho 164.93	erbium 68 Er 167.26	thulium 69 Tm 168.93	ytterbium 70 Yb 173.04
actinium 89 Ac [227]	thorium 90 Th 232.04	protactinium 91 Pa 231.04	uranium 92 U 238.03	neptunium 93 Np [237]	plutonium 94 Pu [244]	americium 95 Am [243]	curium 96 Cm [247]	berkelium 97 Bk [247]	californium 98 Cf [251]	einsteinium 99 Es [252]	fermium 100 Fm [257]	mendelevium 101 Md [258]	nobelium 102 No [259]

Associated elements also defined in CYU prospects?

CYU Share Price

Daily Share Price in A\$

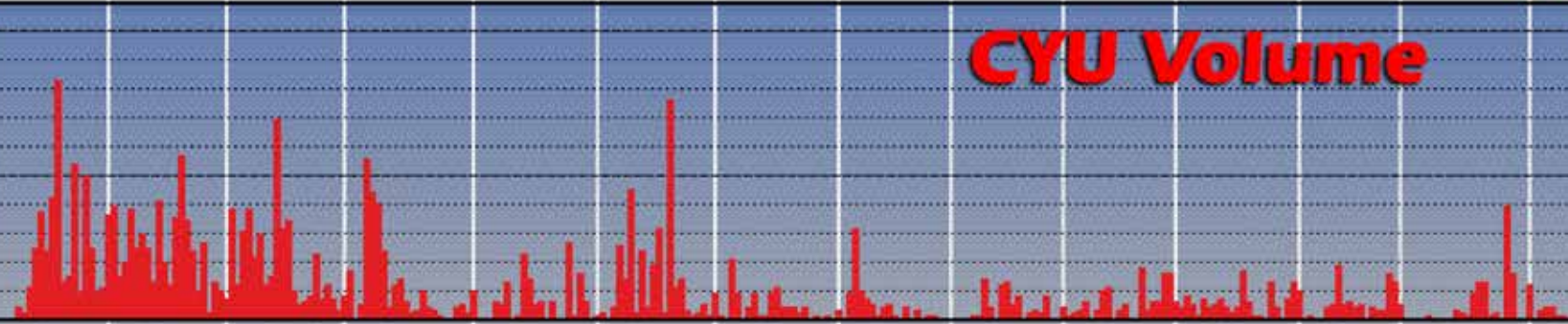
0.30
0.25
0.20
0.15



CYU Volume

Million Shares

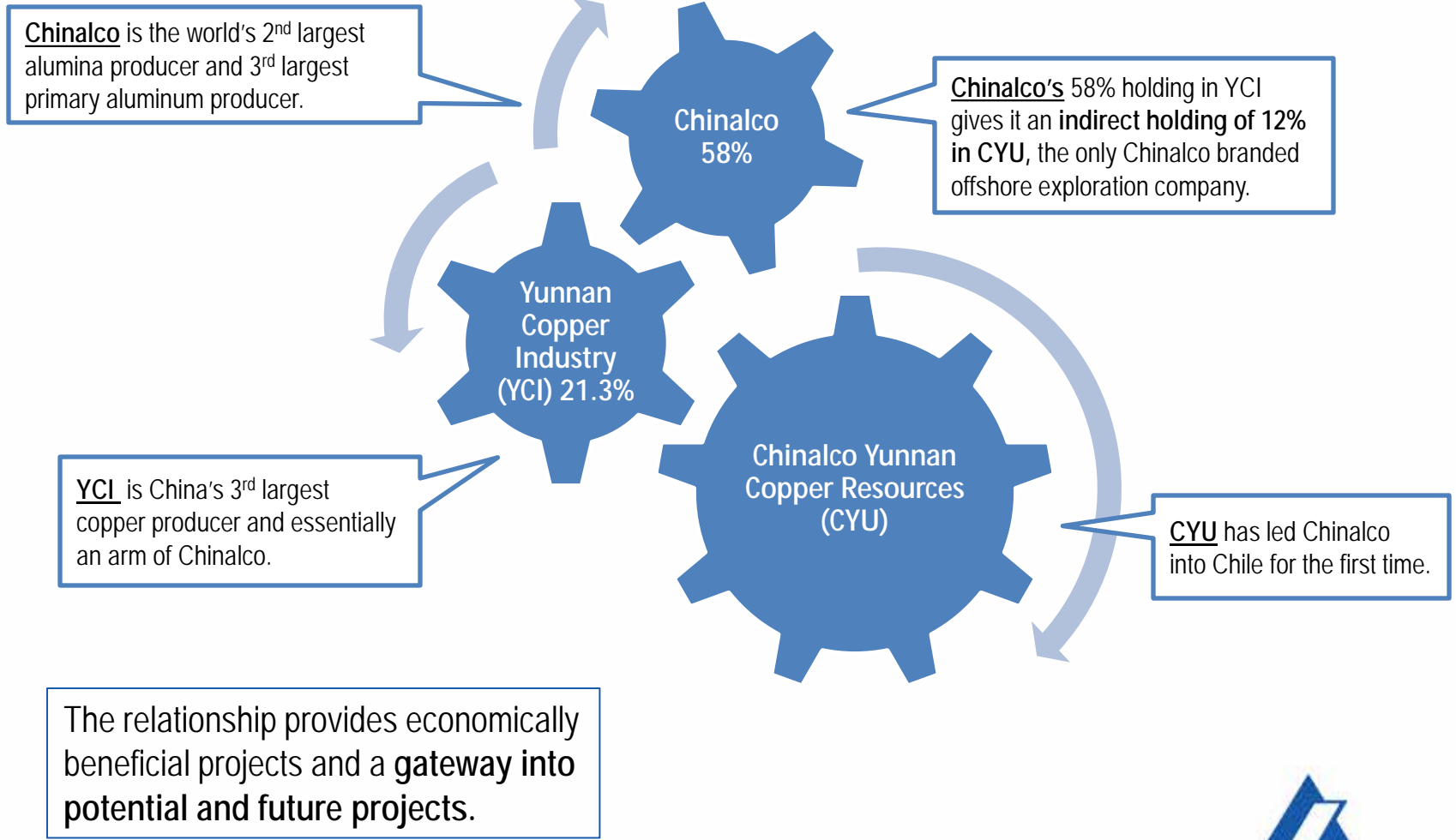
2
1
0



2011

2012

Exceptional Partner: Chinalco



Project Diversity

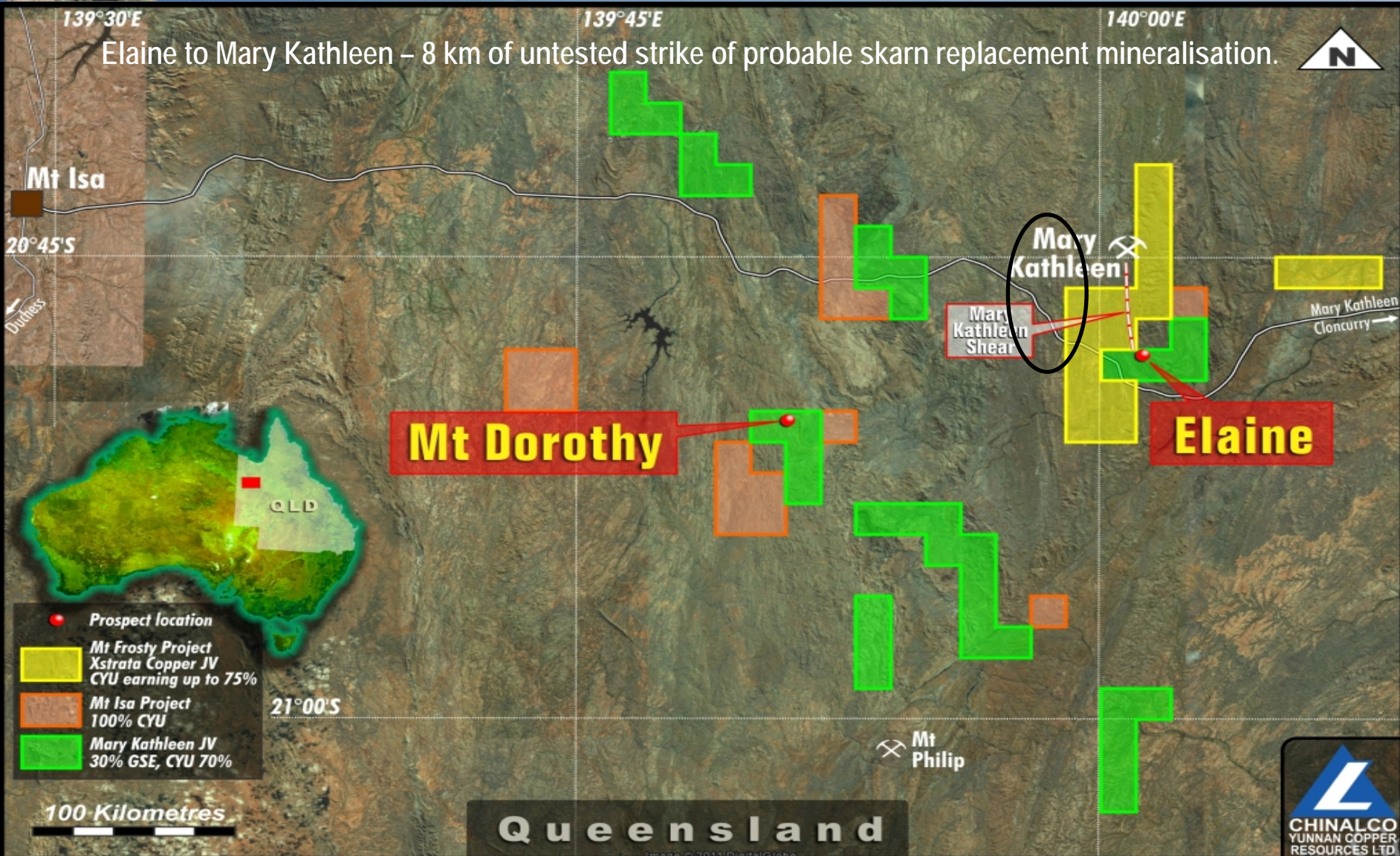


Copper Silver - Laos: Chinalco managed, drilling currently, near term cashflow

Copper – Queensland: Managing Elaine drill out and further discoveries

Copper – Chile: Major porphyry systems being drilled

Queensland – Projects & Possibilities



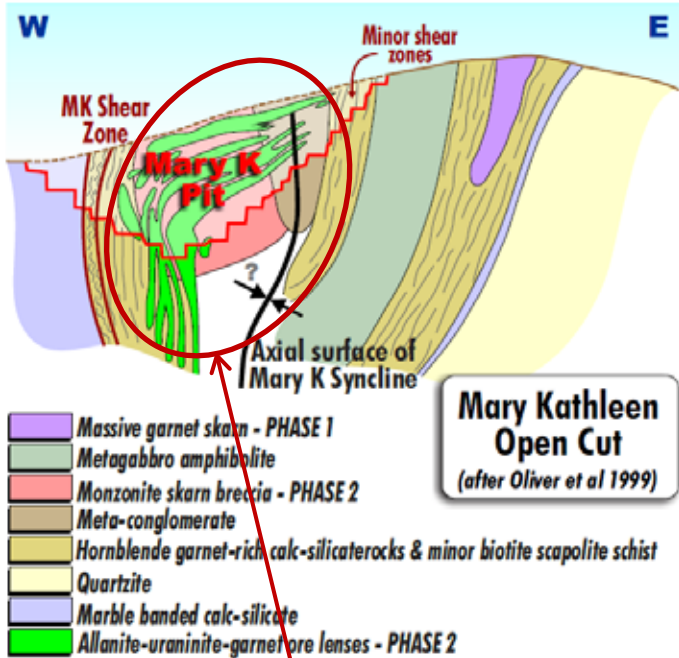
Queensland

- Mt Isa/Cloncurry Region.
- Home to some of the biggest discoveries in Australian mining history.
- We have a discovery. Elaine 26Mt @ 0.62% CuEq*.
- Thick intersections: MKED009
- **109 metres @ 1.98 g/t Gold, 0.50% Copper, 482ppm Cobalt**
- **26m @ 7.76 g/t Gold within this intersection.**
- Recent shallow gold hit with bismuth: MKED026
- **26m @ 1.7g/t Gold, 0.24% Bismuth, 213 ppm Cobalt, 0.27% Copper. Uranium and Rare earths. Including 9m @ 3.63 g/t Gold.**
- Copper, gold, cobalt, rare earths, thorium and uranium present in this project. Forms part of a rich mineral province.

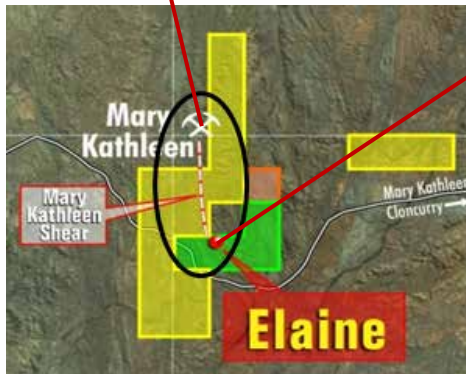
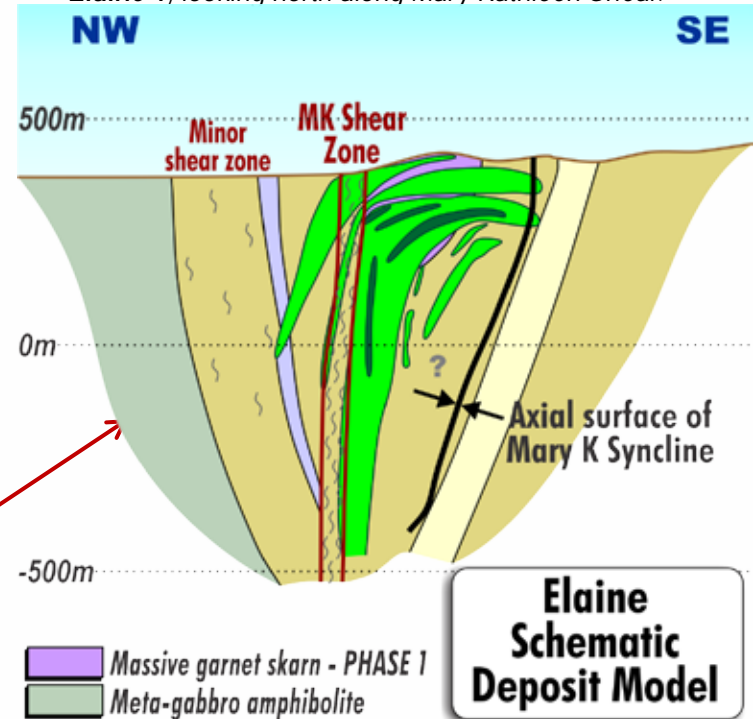


Queensland – Elaine 1 Copper Resource Discovery - 26Mt @ 0.62% Cu Equivalent*

Mary Kathleen, looking north along Mary Kathleen Shear.



Elaine 1, looking north along Mary Kathleen Shear.



QLD - CURRENTLY 150,000t, TARGETING 1,000,000t FINE CU



CHINALCO YUNNAN COPPER RESOURCES

12km untested Mary Kathleen shear including Elaine prospects possibly host to multiple deposits.

Queensland – Elaine 1 Surface Expression

26Mt @ 0.62 % CuEq under here

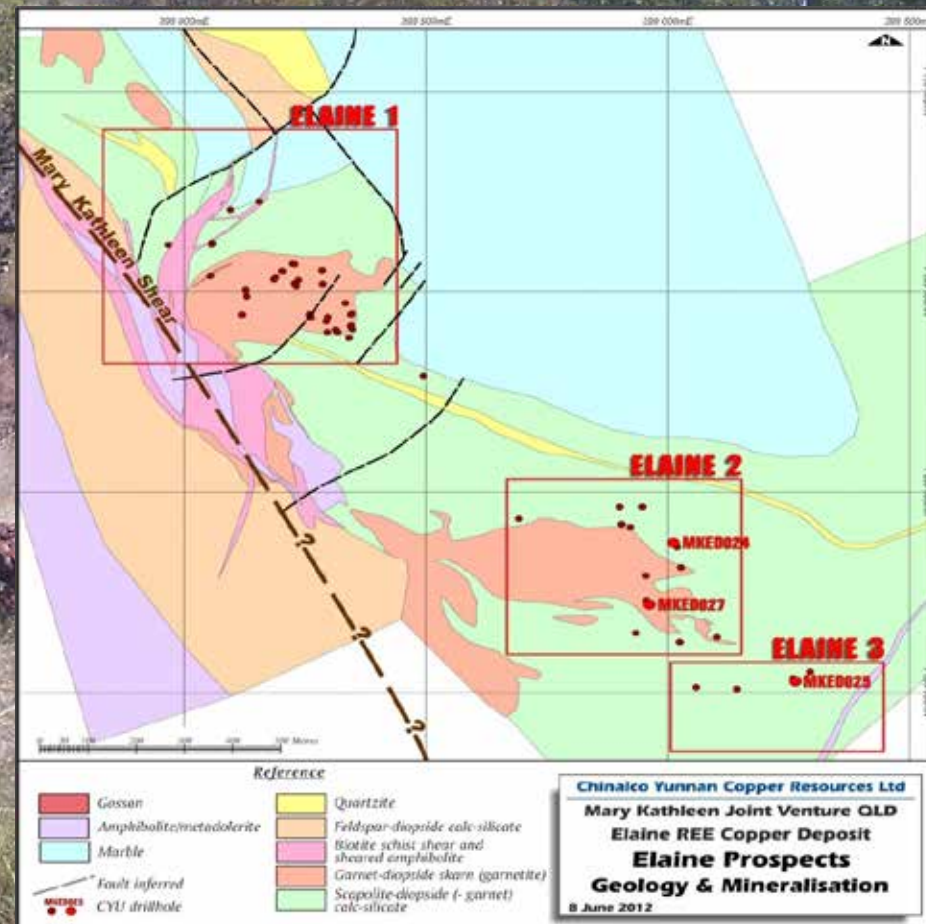
SURFACE EXPRESSION INSIGNIFICANT FOR ELAINE 1 - AND WITH POTENTIAL STRIKE LENGTH OF 8KM NOT TESTED FOR COPPER, CYU CORPORATE EXPLORATION TARGET IS A MINIMUM OF 75 MT – MINIMUM TARGET ANOTHER TWO 26MT SYSTEMS IN A NEW COPPER HOST STRUCTURE IN THE HEART OF THE MT ISA BLOCK.



CHINALCO YUNNAN COPPER RESOURCES

Mary Kathleen Shear – New Copper Regional Target

GEOLOGISTS ON ELAINE 'COPPER GOSSAN' OUTCROP 2km FROM ELAINE 1 BEING DRILLING FROM 26TH SEPTEMBER – MINIMUM TARGET ANOTHER 25MT SYSTEM.

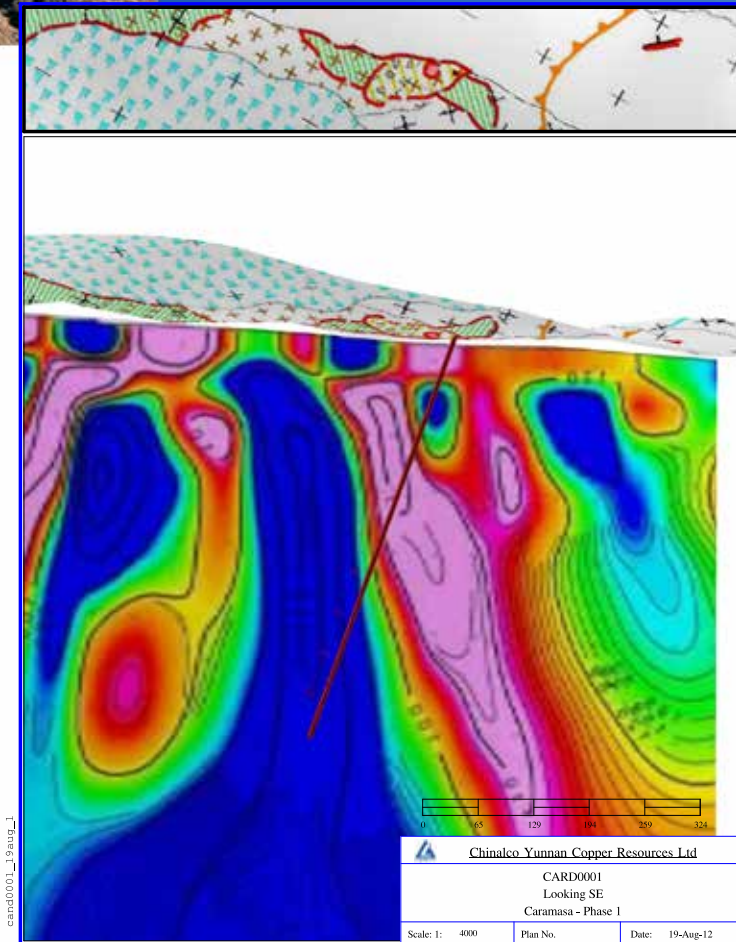


Chile Projects: Porphyry Copper Belt

- Potential major porphyry system in one of five targets being drilled. No significant junior company exploration activity in major company dominated porphyry belts.
- Adjacent to Peruvian border. Major structures run into Peru and billion tonne systems. Chile better jurisdiction.
- Caramasa being drilled now then Palmani (Rio Tinto JVs) and Humito in 2013 – seeking major multi-porphyry systems.
- Drilling Sulfatos post discovery (JV with Codelco), 92m @ 0.65% Copper to be followed up. Near multi billion tonne Quebrada Blanca and Collahausi deposits.



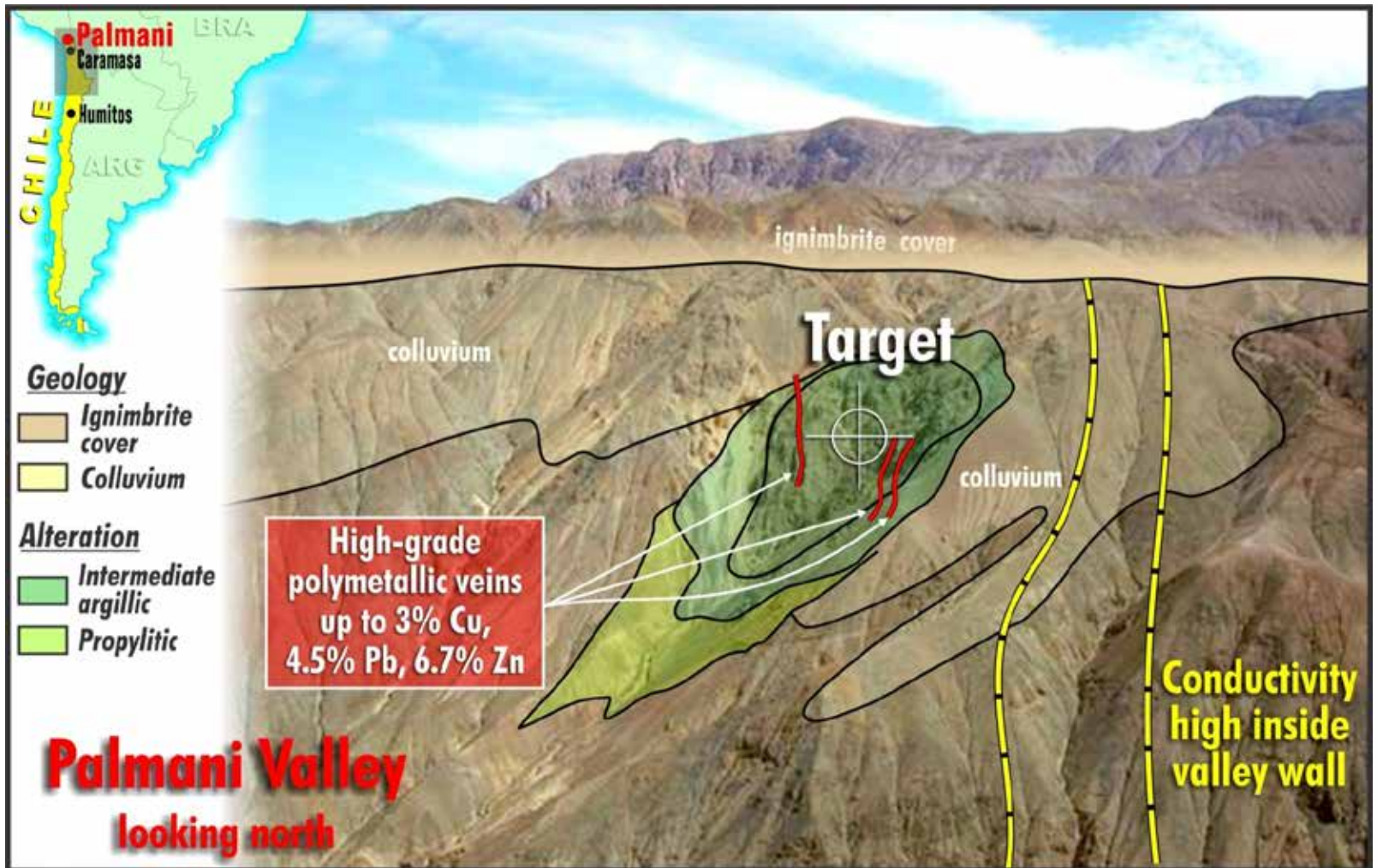
Chile Projects: Drilling Caramasa Now



XPLORPAC - Chinalco Yunnan Copper Resources Ltd

- Caramasa near surface rock chips include over 1g/t Au and silver arsenic credits in epithermal texture veins, also testing conductive vertical structure.

Caramasa and Palmani Porphyries next to be drilled



Laos: Projects



- Subject to exploration success in targets centered in Mohan area, development and production options through Chinalco Yunnan Copper in Kunming.
- Corporate Target 100Mt @ 1% copper and 120g/t silver.
- Initial drilling for Xinzhai and Juizhai sub economic – subject to review.

Contact Details

Level 6, 316 Adelaide St
Brisbane QLD 4000

Telephone: +61 7 3108 3550
Fax: +61 7 3108 3501

www.cycal.com.au

Jason Beckton:
jason@cycal.com.au





Discovery of Copper REE in Queensland



Exploring worlds best copper ground in Chile



Advanced Project drilling, Laos



Drilling known targets – not greenfields



***Strong support from strategic shareholders,
Chinalco & Yunnan Copper***