



WORKING TO UNLOCK THE MINERAL
TREASURES OF PAPUA NEW GUINEA

Canadian Investor Presentation

24 – 28 November 2008

“An Update on the Yandera Copper-Molybdenum Project,
Papua New Guinea”

Les Emery – Managing Director
Marengo Mining Limited

NOT FOR DISSEMINATION IN THE UNITED STATES OR RELEASE THROUGH ANY U.S. NEWSWIRE
SERVICE



Disclaimer

The information contained herein, while obtained from sources believed to be reliable, is not guaranteed as to its accuracy or completeness. This presentation is for information purposes only and does not constitute an offer to sell or a solicitation to buy any securities referred to herein. The securities referred to herein have not and will not be registered under the United States Securities Act of 1933, as amended, and may only be offered or sold within the United States pursuant to exempting thereunder.

Certain statements in this presentation contain forward-looking information. These statements include, but are not limited to, statements with respect to future exploration, development, production and costs. These statements address future events and conditions and, as such, involve known and unknown risks, uncertainties and other factors which may cause the actual results, performance or achievements to be materially different from any future results, performance or achievements expressed or implied by the statements. Such factors include, among others, the results of future exploration, risks inherent in resource estimates, increases in various capital costs, availability of financing and the acquisition of additional licences, permits and surface rights.

U.S. Investors are cautioned that the terms "Measured", "Indicated" and "Inferred" Resources are not recognized by the United States Securities and Exchange Commission ("SEC") and they should not assume that any or all of the mineral resources in these categories will ever be converted into reserves. Inferred resources have a great amount of uncertainty as to their existence, and great uncertainty as to their economic and legal feasibility. As set forth in this presentation, certain resources disclosed herein have been calculated in accordance with JORC, and these may not be comparable to resources calculated by U.S. companies subject to the SEC requirements.

JORC refers to the 2004 Edition of the Australasian Code for Reporting of Exploration Results, Mineral Resources and Ore Reserves (The JORC Code, 2004 Edition).

Copper equivalent grades for reported drill hole intercepts were calculated using a molybdenum /copper price ratio of 10:1. For reference current spot copper metal price is US\$1.70 per pound and molybdenum metal price is US\$18 per pound.

In the company's opinion both elements included in the metal equivalents calculation have a reasonable potential to be recovered.

Disclaimer (cont'd)

Sections of this presentation relating to drilling intercepts and mineralisation (excluding the Yandera Resource Estimate) were prepared by Mr Peter Dendle who is a member of the Australasian Institute of Mining and Metallurgy and a full-time employee of Marengo Mining Limited. Mr Dendle has sufficient experience which is relevant to the style of mineralisation and type of deposit under consideration and to the activity which he is undertaking to qualify as a Competent Person as defined in the 2004 Edition of the Australasian Code for Reporting of Exploration Results, Mineral Resources and Ore Reserves (The JORC Code, 2004 Edition). Mr Dendle consents in writing to the issue of this presentation, to the extent of matters based on his information in the form and context in which it appears.

The section of this report relating to the Yandera Resource Estimate was prepared from information by Mr Stephen Godfrey of Golder Associates Pty Ltd. Mr Godfrey is a Member of the Australasian Institute of Mining and Metallurgy and has sufficient experience relevant to the style of mineralisation and type of deposit under consideration and to the activity undertaken to qualify as a Competent Person as defined in the 2004 Edition of the Australasian Code for Reporting of Exploration Results, Mineral Resources and Ore Reserves (The JORC Code, 2004 Edition). Mr Godfrey consents to the inclusion in this announcement of the matters based on this information, in the form and context it appears.

The updated mineral resource estimate and the resource estimate for the by-product metals and all other scientific and technical information contained in this news release (including Appendix B) was prepared by or under the supervision of Stephen Godfrey, Senior Resource Geologist, Golder Associates Pty Ltd. Mr Godfrey is a "Qualified Person" as defined by National Instrument 43-101 "Standards of Disclosure for Mineral Projects" ("NI 43-101"). Mr Godfrey is independent of Marengo, as such terms defined in NI 43-101. Mr. Godfrey has read and approved the contents of this news release (including the Appendices hereto). Mr Godfrey verified the data disclosed and underlying the information contained in this news release. The effective date of the updated mineral resource estimate and the resource estimate for the by-product metals is October 22, 2008. The method used to verify the data was similar to that described in Marengo's technical report filed on SEDAR and dated November 9, 2007. The key assumptions, parameters and methods used to estimate the mineral resources are as set out in Appendix B hereto. The estimate of mineral resources are not materially affected by any known environmental, permitting, legal, title, taxation, socio-political, marketing or other relevant issues. Mineral Resources which are not Mineral Reserves do not have demonstrated economic viability.

Outline of Presentation

1. PNG Overview
2. Marengo Overview
3. The Marengo Team
4. Yandera Project Update



PNG Overview

- Marengo Mining is fully focused on activities in The Independent State of Papua New Guinea.
- A stable Commonwealth country with a thriving mining and exploration industry.
- The Government of Sir Michael Somare was returned in July 2007 for a second five year term.



PNG – Ideally Located

PNG is ideally located for shipping to Asian markets



Corporate Overview

- Listings: Australia (ASX), Canada (TSX), Papua New Guinea (POMSoX)
Share Code: MGO (ASX & POMSoX), MRN (TSX)
- Listed Shares: 268 million
- Unlisted Options: 8.4 million (A\$0.20–A\$0.50 exercise price)
- Cash: A\$19.9 million (at 30 September 2008)
- Market Cap: A\$27 million (undiluted @ A\$0.10)
- Shareholders: 2,100 (16% based in PNG)
- Shareholders include:

Sentient Global Resources Fund II (23.8%)	Australian & North American Institutions
Public Officers Superannuation Fund (PNG)	Nasfund Limited (PNG)
The Royal Bank of Scotland – Sempra Metals 6.5%	Management (2.69%)

Marengo Board

- **John Horan – Chairman:** Many years of mining industry experience; Former Finance Director – Homestake Gold and former director – TSX/ASX listed Golden China Resources Corporation, currently a director of Adelaide Resources Limited (ASX).
- **Les Emery – Managing Director:** Well experienced in exploration, mining and corporate administration, former MD of Lynas Corporation (ASX -Gold and Rare Earths) and Herald Resources (ASX - Gold).
- **Sir Rabbie Namaliu– Non Executive Director:** Former Prime Minister of PNG (1988-1992) and long serving member of successive governments with roles including Foreign Minister.
- **Douglas Dunnet – Non-Executive Director:** Over 30 years of experience including 14 years with Anaconda (USA) group of companies; previously Managing Director of Orion Resources (ASX – Gold).

Marengo Board – Cont

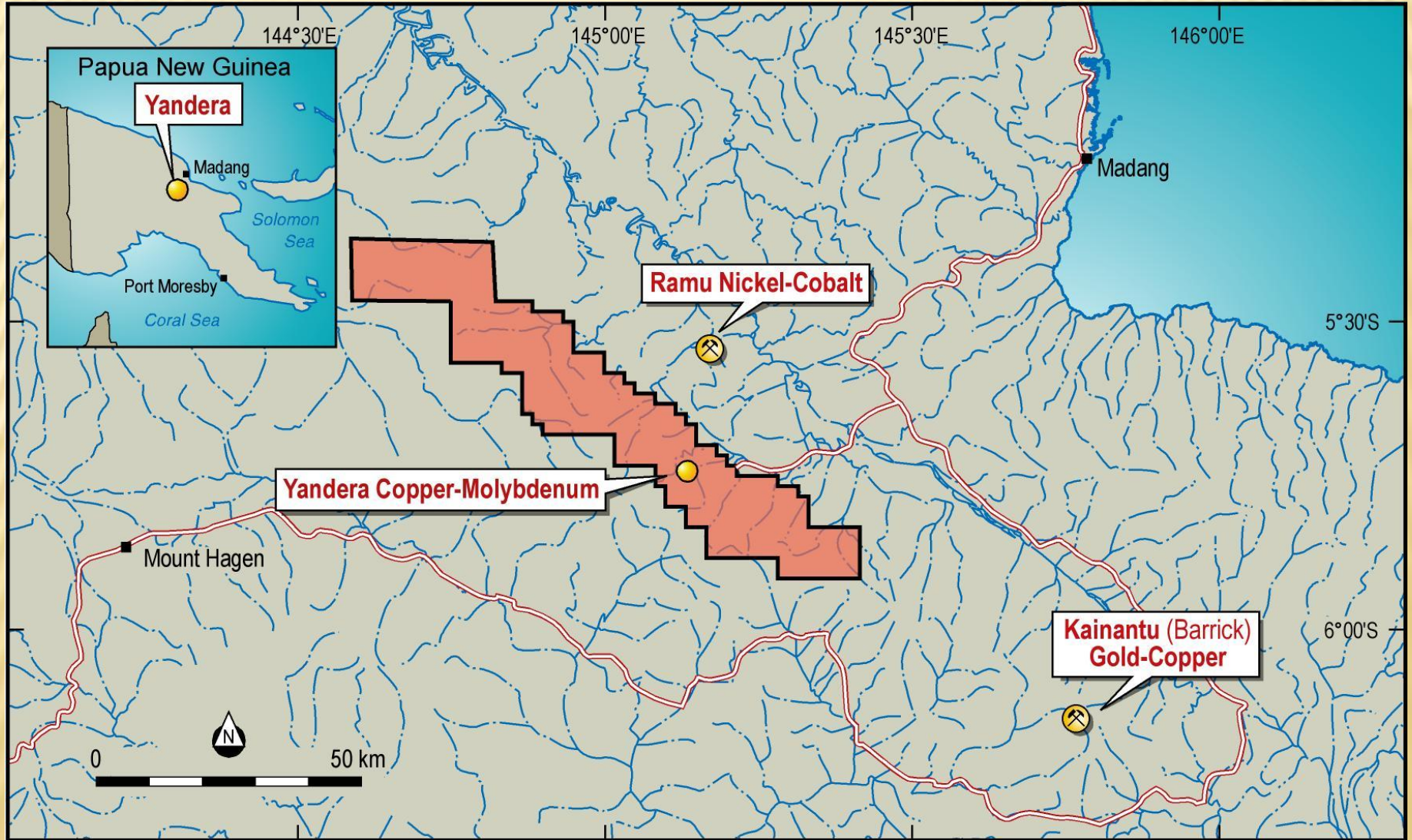
- **Susanne Sesselmann – Non-Executive Director:** More than 20 years experience in investment banking and project financing throughout the world. A director of international private equity resource fund, The Sentient Group.
- **Elizabeth Martin – Non-Executive Director:** Comes from an accounting background and has extensive corporate experience within the resource industry. Elizabeth is Toronto based.
- **John Hick – Non-Executive Director:** Comes from a legal background and has extensive corporate experience within the resource industry. John is Toronto based.
- **Andrew Meloncelli – Company Secretary & Chief Financial Officer:** Extensive finance and corporate experience working for public companies listed on both ASX and AIM market (UK).

Marengo Management

- **Sam Akoitai – Director, Marengo Mining (PNG) Limited**
Former PNG Mining Minister and prior experience with Bougainville Copper.
- **Peter Dendle – Project Manager**
Responsible for overall site management at Yandera including drilling operations, community relations and environmental matters. Extensive international experience in project management.
- **Grant Calderwood – Operations Manager**
Responsible for the completion of the DFS and subsequent development. Well experienced in study and implementation management including PNG (Porgera gold mine).
- **Malcolm Roberts – Principal Geologist**
Responsible for Yandera geological activities (both resource and exploration). Recent PNG experience with the European Union geological support programs.

Further details on Marengo's Board & Management can be viewed at www.marengominig.com

Yandera Copper-Molybdenum Project



Active Neighbours – Ramu Nickel/Cobalt Project

- US\$1.4 billion nickel/cobalt mine and refinery scheduled for completion late 2009.
- Owned and operated by consortium led by China Metallurgical Construction Corporation.
- Largest mining operation to date in Madang Province.
- Ramu mine located 20 km from Marengo's Yandera Project.



Madang – A Thriving Seaport

- Provincial capital of PNG's progressive Madang Province and located approximately 100 km north-east of Marengo's Yandera Project.
- Active deepwater seaport located on the Bismark Sea.
- Thriving local industries of timber, woodchips, engineering, copra, coffee, tuna fishing, tourism and now mining.
- Well served with tertiary institutions, including university and school of nursing.
- Daily jet services to national capital of Port Moresby and other regional centres.



Yandera Copper-Molybdenum Project

YANDERA PROJECT RESOURCE ESTIMATE (as at 24 October 2008)

Table 1. Copper-Molybdenum

Cut-off	Tonnes	Cu Eq	Cu	Mo
(% Cu Eq)*	(million)	(%)	(ppm)	(ppm)
INDICATED RESOURCE				
0.20	527	0.38	2,793	104
0.25	410	0.43	3,109	118
0.30	314	0.48	3,413	135
INFERRED RESOURCE				
0.20	766	0.33	2,488	82
0.25	519	0.38	2,879	94
0.30	351	0.43	3,275	106

* Cu Eq calculated as [Cu + (10 x Mo)]

Yandera Copper-Molybdenum Project

YANDERA PROJECT RESOURCE ESTIMATE (as at 24 October 2008)

Table 2. By-Products (Gold, Silver & Rhenium) **

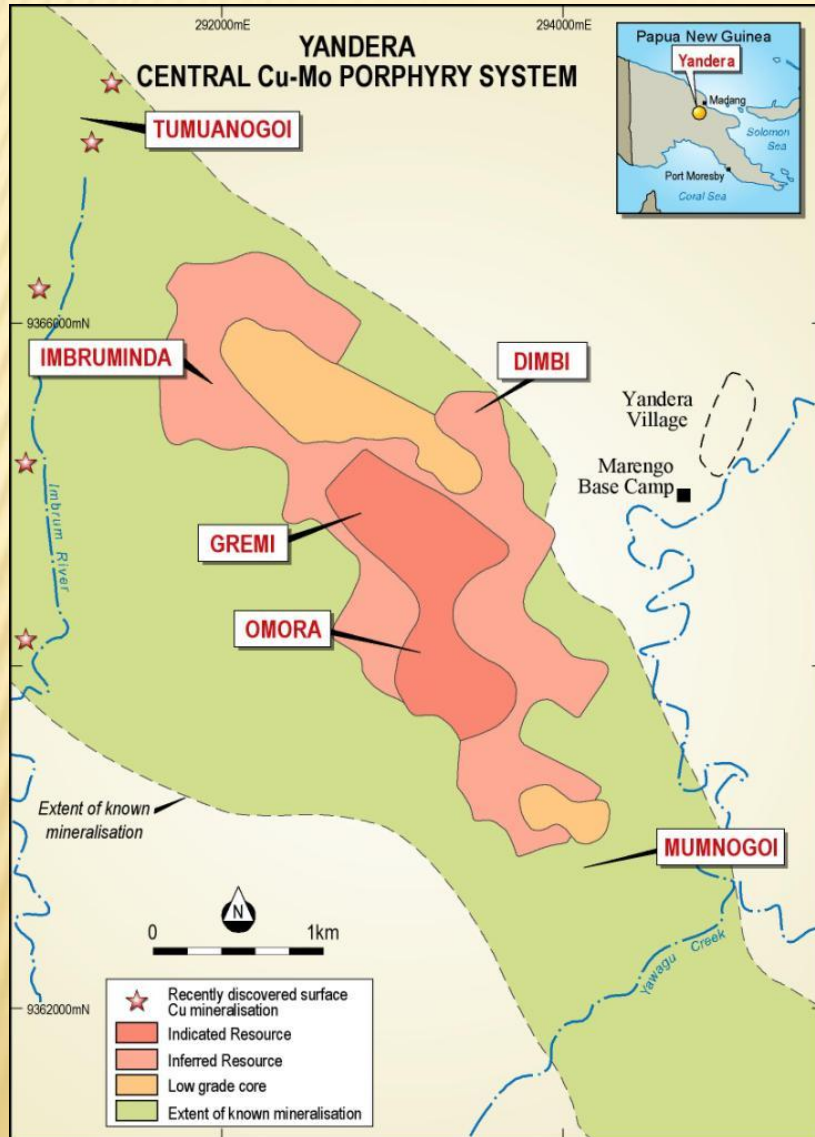
The Copper-Molybdenum resource **includes** the following by-product metals:

Cut-off	Tonnes	Au	Ag	Re
(% Cu Eq)	(million)	(g/t)	(g/t)	(ppm)
INDICATED RESOURCE				
0.20	1,293	0.08	1.35	0.07
0.25	929	0.08	1.46	0.08
0.30	666	0.09	1.56	0.08

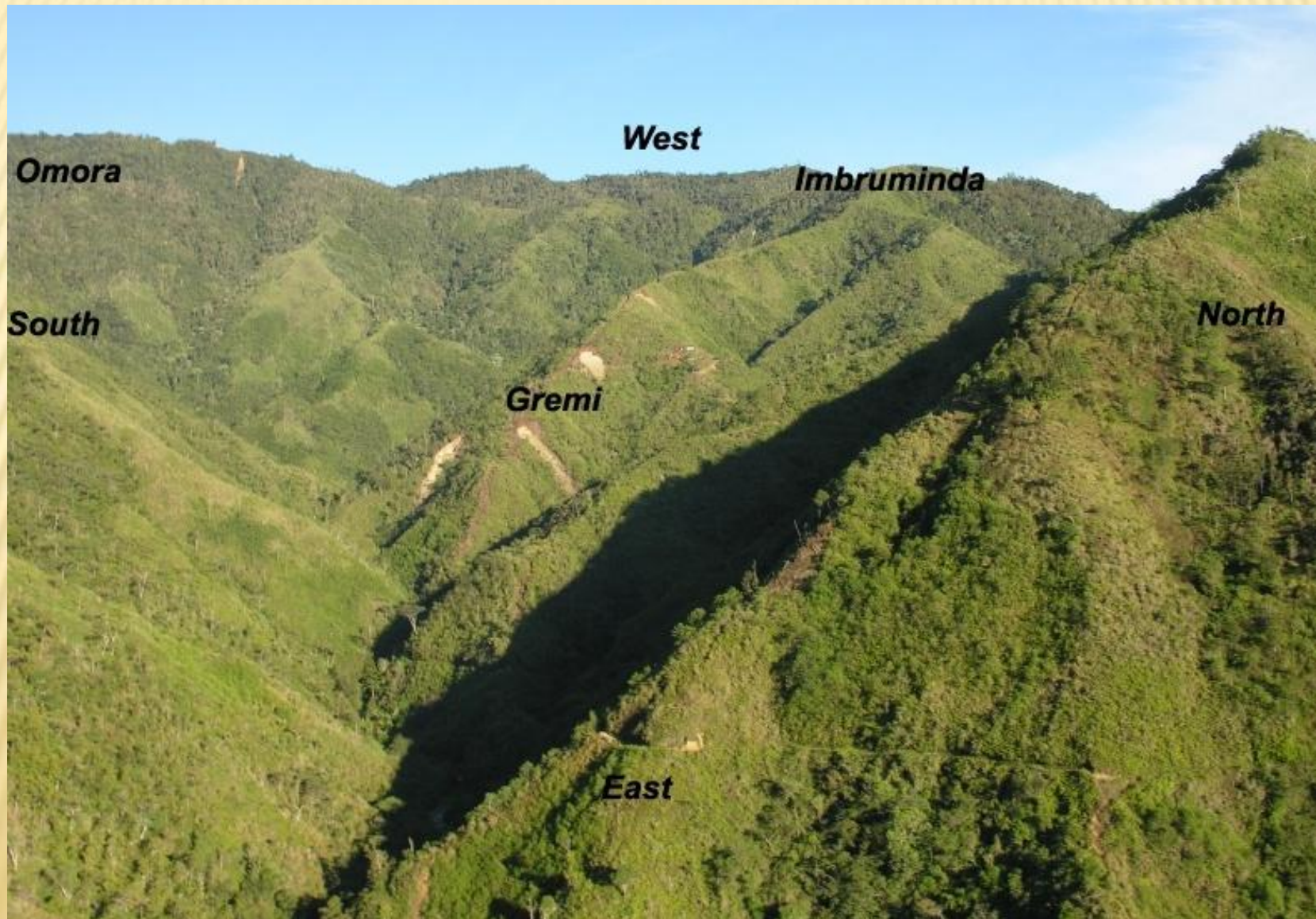
* **Not included in Cu Eq

Note: The by-product resource is contained within the Indicated and Inferred resource in Table 1. Au and Ag grades have been estimated from a smaller set of data than the Cu and Mo grades. Re has been calculated by regression against Mo based on a limited amount of sampling. Uncertainty in the characterisation of the Au, Ag and Re metal content of the resource has resulted in no part of the by product resource being classified as Indicated.

Yandera Central Porphyry

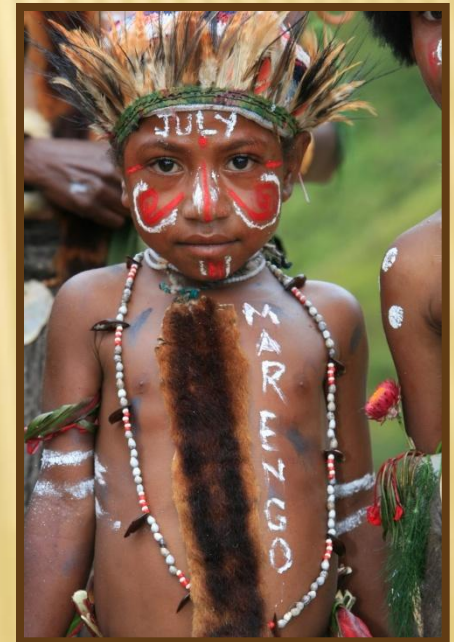


Yandera Central Porphyry



Definitive Feasibility Study

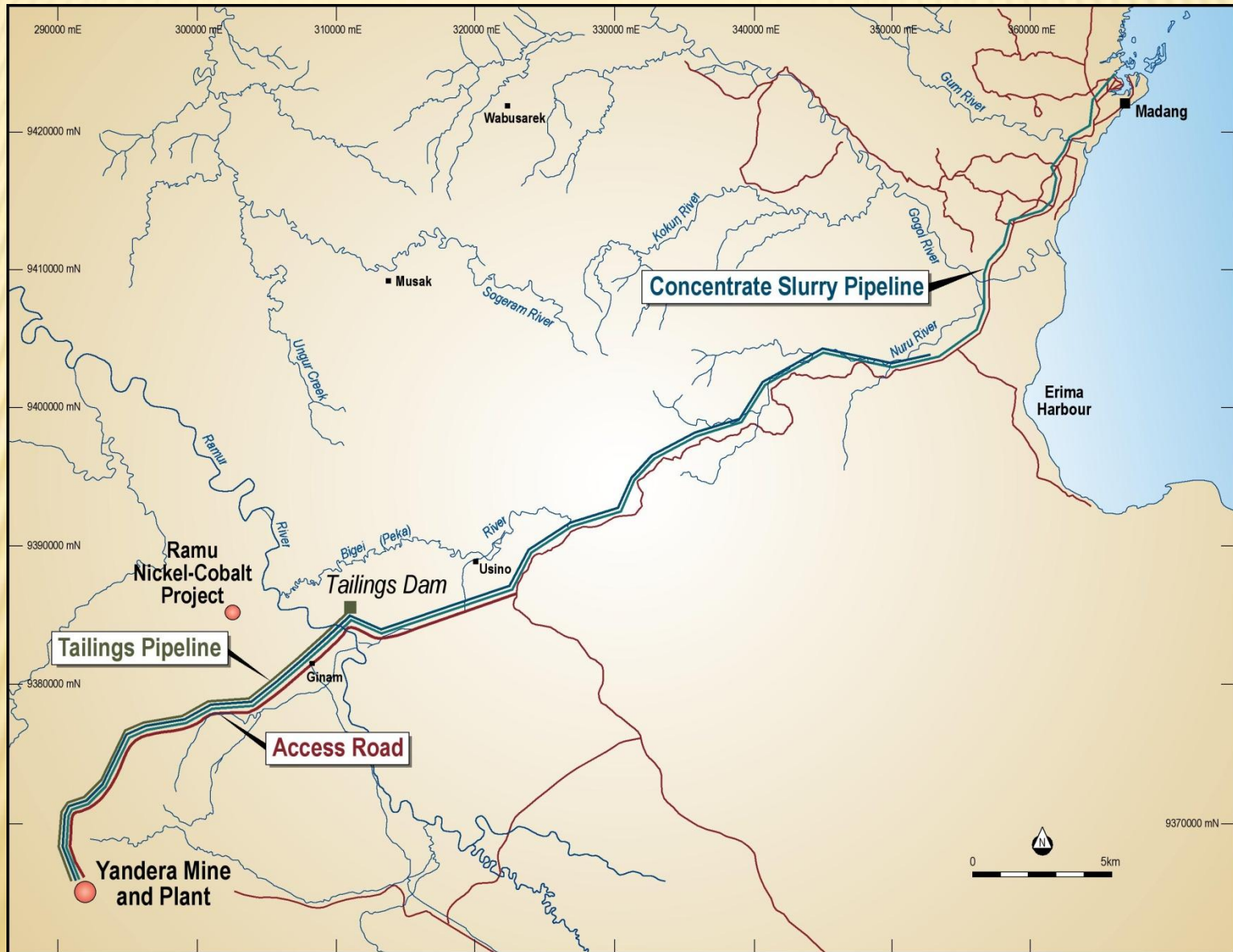
- Key Consultants are: GRD Minproc, Golder Assoc, Robert Bird Group, Klohn Crippen Berger, Brass Engineering & Coffey Natural Systems.
- Phase 1 completed April 2008 and involved a review of work to date, selection of process and infrastructure options.
- Phase 2 is underway and will involve completion of the study by providing:
 - Detailed open pit design and mining schedules
 - Final infrastructure and ore transport selection
 - Detailed process plant design
 - Final capital and operating cost estimates
 - Community involvement strategies
 - Environmental management systems
 - Overall project economics
- DFS scheduled for completion by December 2009.



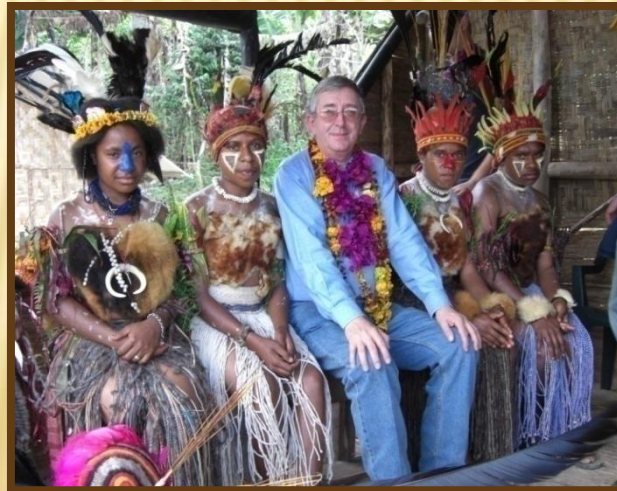
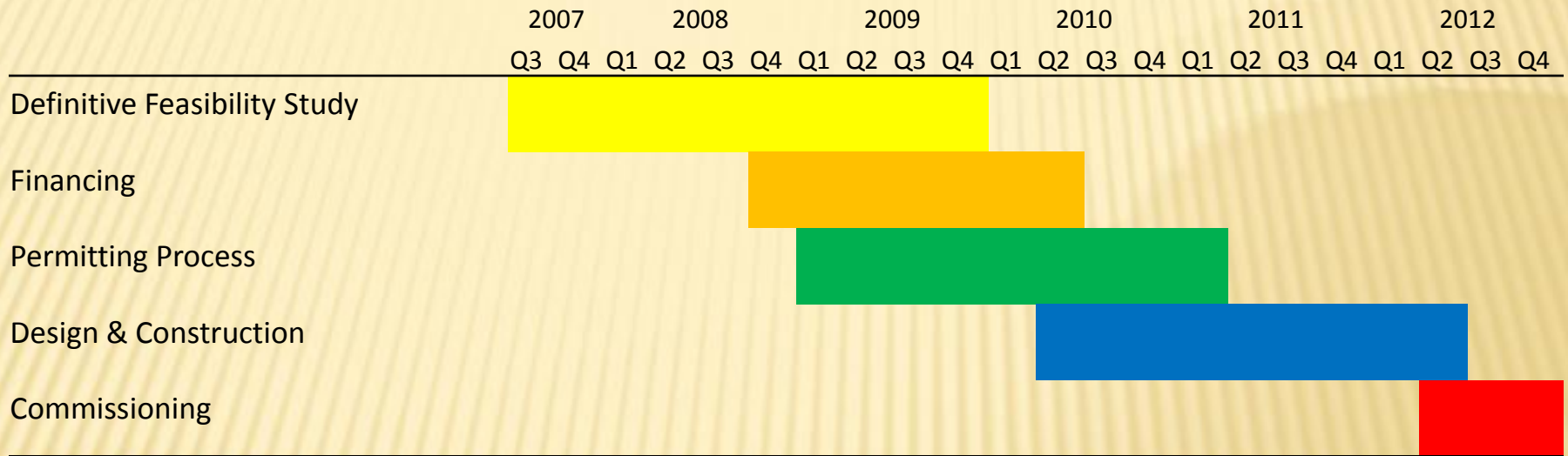
Yandera DFS – Phase 1 (Outcomes)

- Open-cut mining operation over an initial 10 year time frame.
- Ore processing commencing at 25Mtpa with capacity for increase throughput.
- Near mine processing plant encompassing separate copper and molybdenum flotation circuits.
- Transportation of copper concentrate via slurry pipeline to the existing port of Madang.
- Alternative tailings management options identified.
- Implementation of world class environmental standards and community relations initiatives to ensure a successful project development for all stakeholders.

Yandera DFS – Phase 1



Yandera Timeline



Yandera Project – Resource Drilling

- More than 200 diamond drill holes have been completed on the Yandera Central Porphyry, for a total of some 80,000 metres.
- The 2008 field season will close in early December with a total of 29,000 metres drilled.
- The 2009 field season will see drilling start-up in late January.
- During the 2008 field season many credible intersections were encountered, including:



197m @ 0.78% Cu, 541 ppm Mo

177m @ 0.78% Cu, 65 ppm Mo

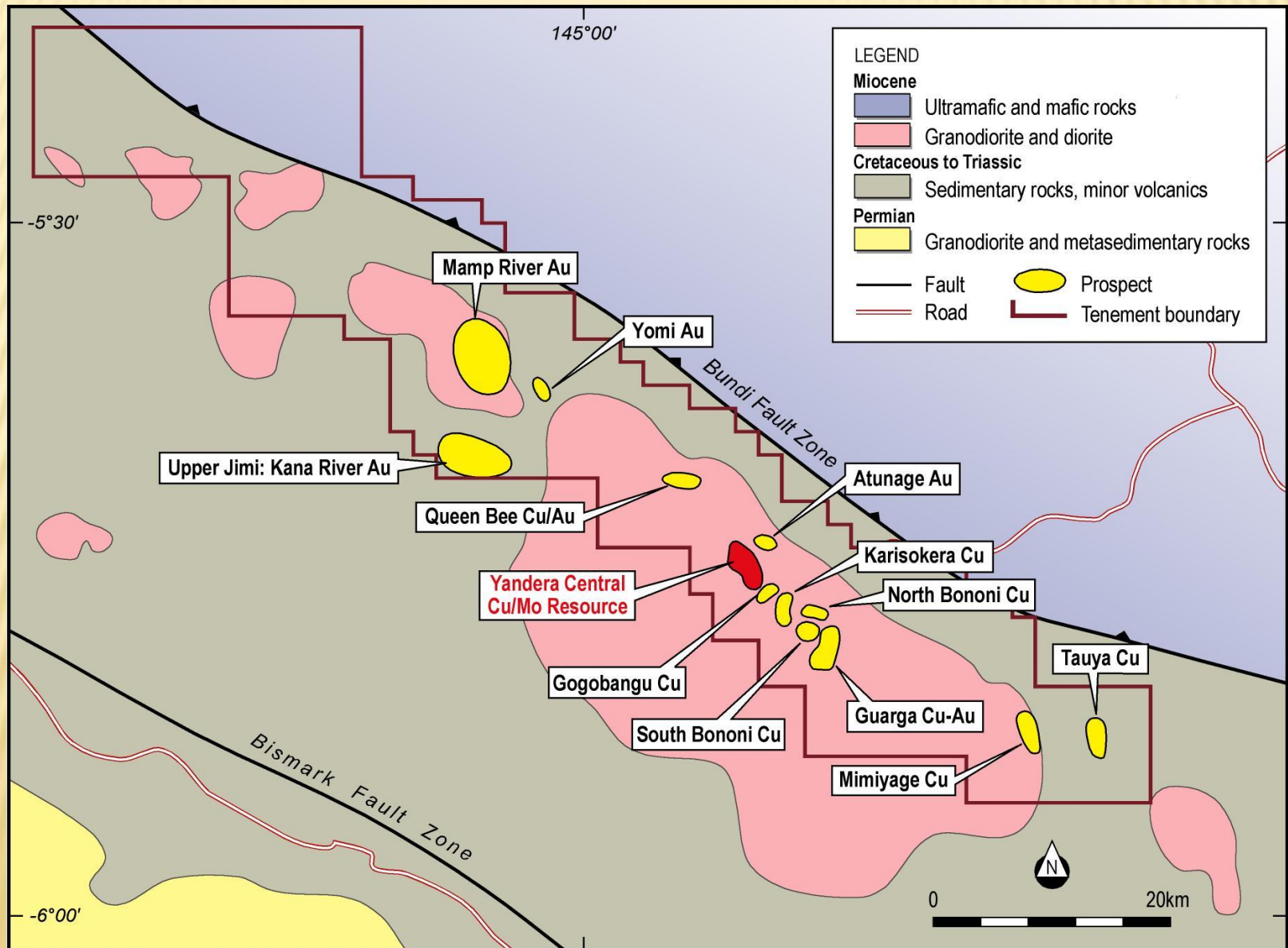
197m @ 0.54% Cu, 359 ppm Mo

138m @ 0.55% Cu, 85 ppm Mo

412m @ 0.42% Cu, 96 ppm Mo



Yandera Regional Exploration



Social & Environmental Responsibility

Marengo is fully committed to responsible community relations and environmental management to benefit all stakeholders.



The Future

Marengo Mining is proud of the alliance that it has forged with the people of the Yandera District and this can only strengthen as we work together.



- *MARENGO – The way to go!*



Em tasol
(That's all)

